

TROISIEME LIVRE DE DANCERIES

A QUATRE ET CINQ PARTIES, VEV PAR CLAVDE

Geruaife (le tout en un volume) nouvellement imprimé à Paris par la vefue de Pierre

Attaingnant, demourant en la Rue de la Harpe, pres leglise S. Cosme .

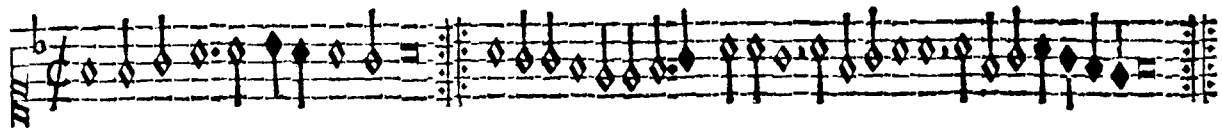
P Auanne, Si ie m'en vois: avec fa gaillarde, à cinq.	Fo. I.
Pauanne, Est il conclud.	II.
Gaillarde, Est il conclud.	III.
Pauanne, L'admiral: avec fa gaillarde, à cinq.	IIII.
Pauanne, De la guerre.	V.
Gaillarde, De la guerre.	VII.
Deux gaillardes, du ton de la guerre.	VIII.
Six branles simples.	IX.
Six branles gays.	XIII.
Huit Almandes.	XVI.
Dix branles de Bourgogne.	XXI.
Six autres branles de Bourgogne.	XXIX.

15. cal. Feb. I 5 5 6.

Avec priuilege du Roy, pour neuf ans.

A cinq.

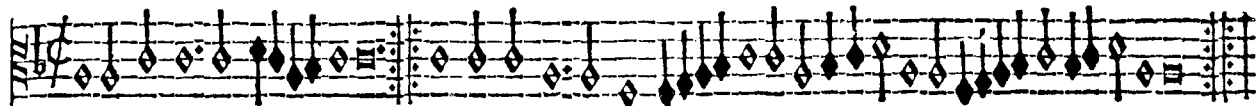
SVPERIVS ET TENOR



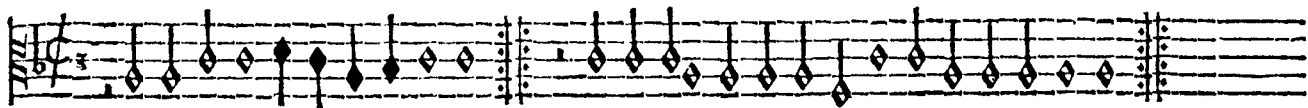
Pauanne, Si ie m'en vois.



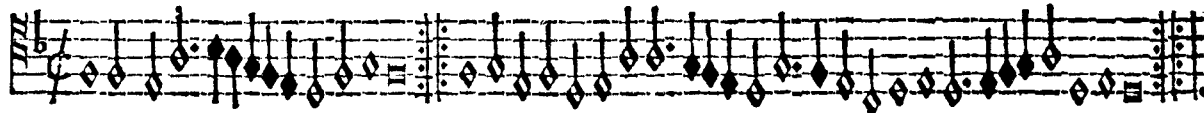
Gailarde. Si ie m'en vois.



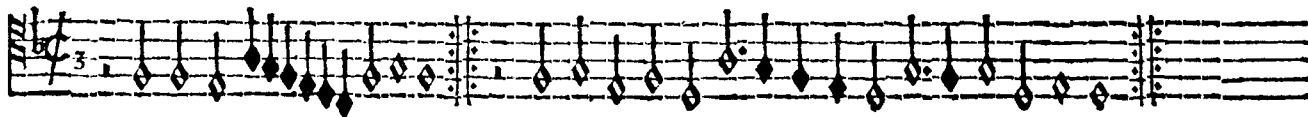
Tenor. Pauanne.



Gailarde.

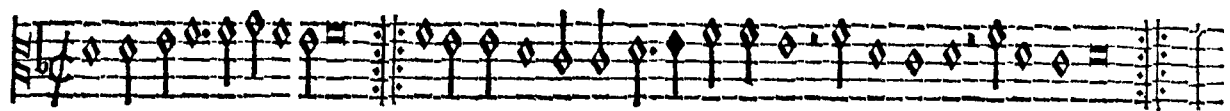


Secundus tenor. Pauanne.

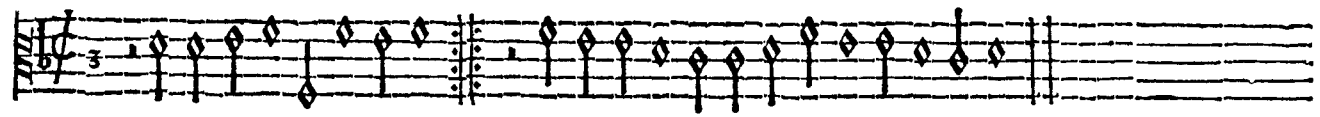


Gailarde.

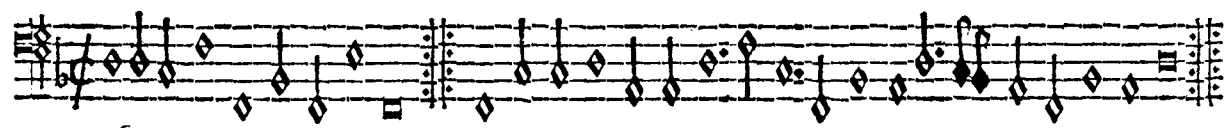
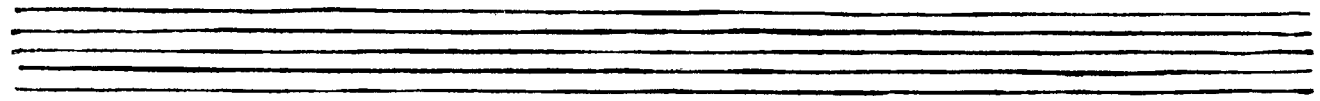
CONTRATENOR ET BASSVS.



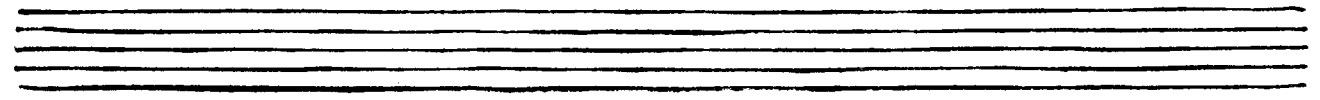
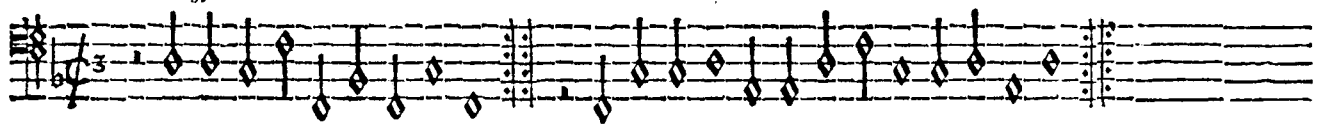
Ruante.



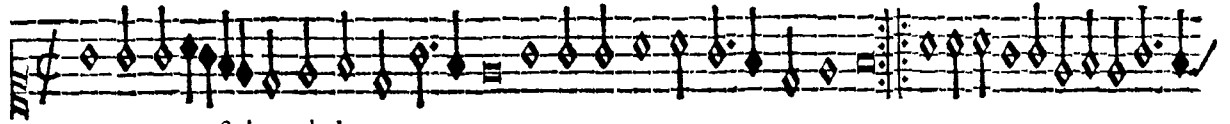
Gaillarde.



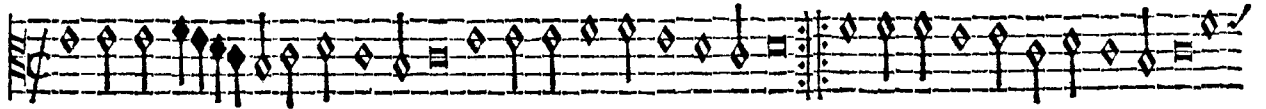
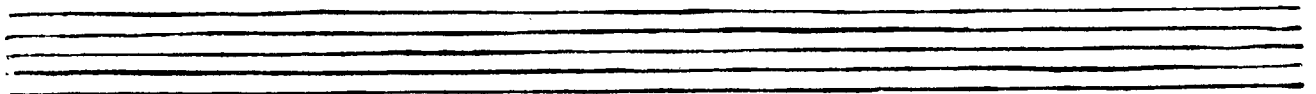
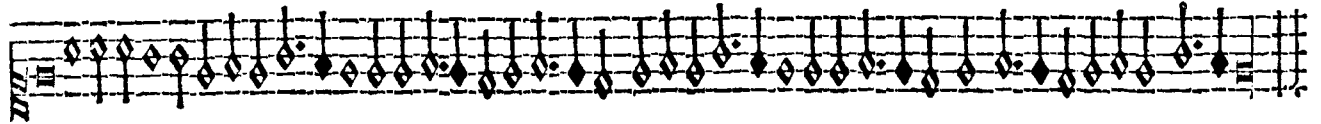
Bassus. Ruante.



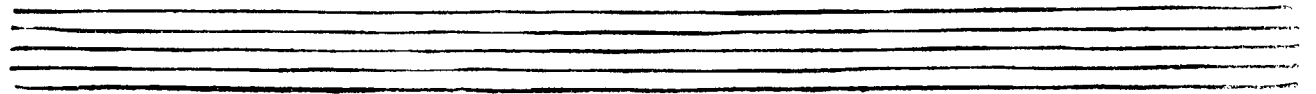
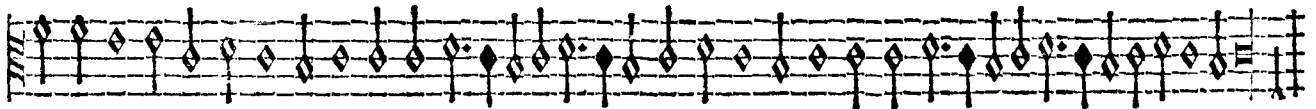
SVPEIVS ET TENOR.



Pauanne, Est il conclud.



Tenor. Pauanne.

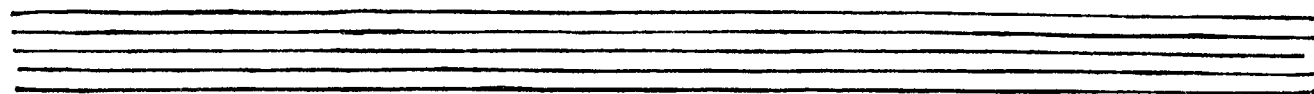
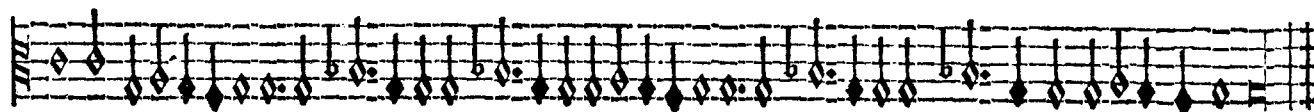


CONTRATENOR ET BASSVS.

III.

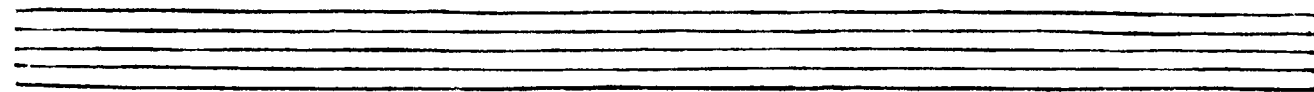
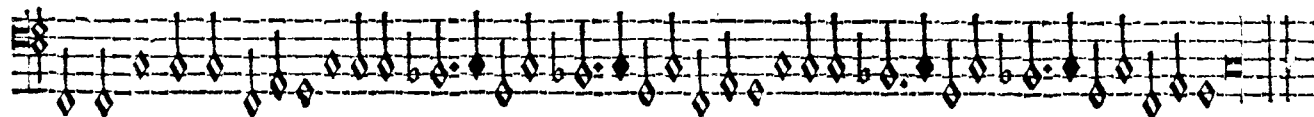


Pauanne.



Bassus.

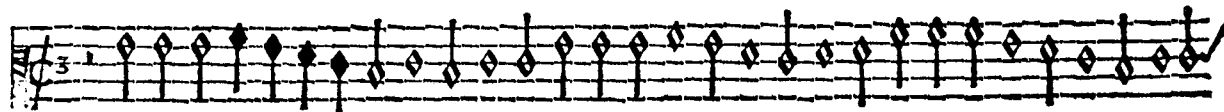
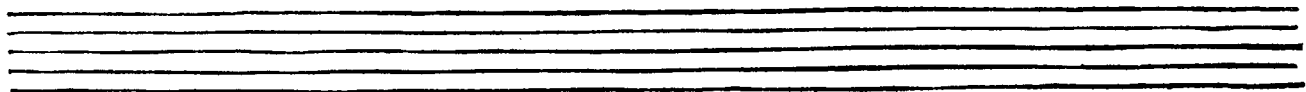
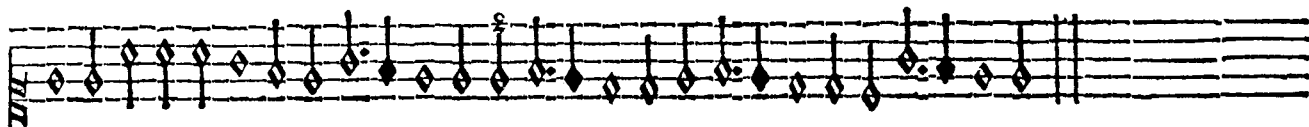
Pauanne.



SVPEIVS ET TENOR.



Gaillarde, Estil conclud.

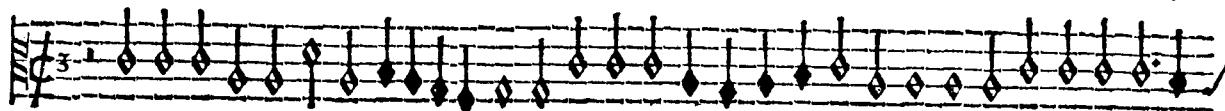


Tenor. Gaillarde.

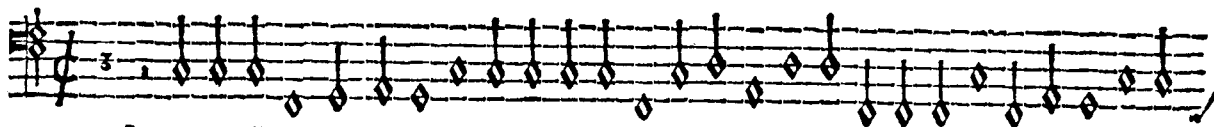
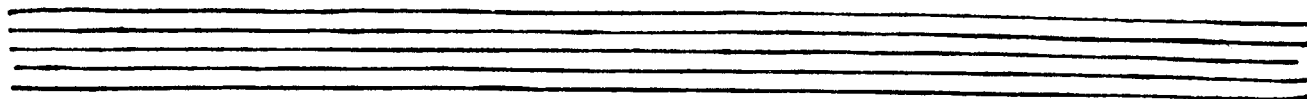
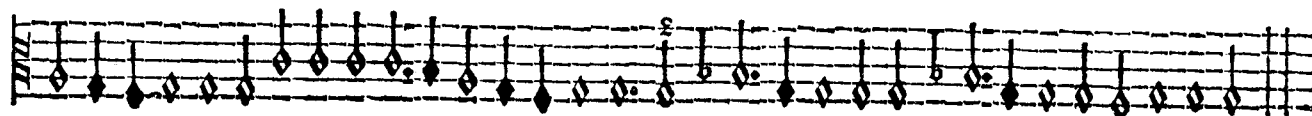


CONTRATENOR ET BASSVS.

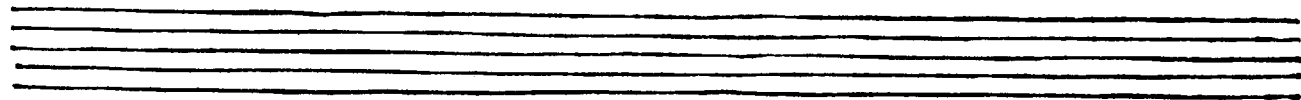
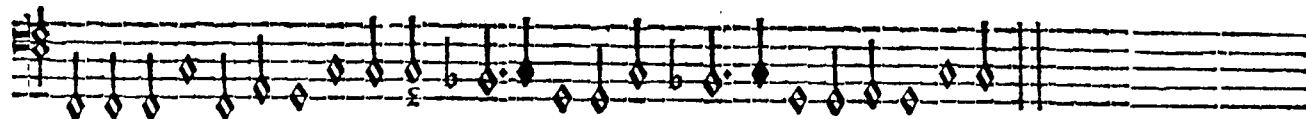
IIII.



Gaillarde.



Bassus. Gaillarde.



A cinq.

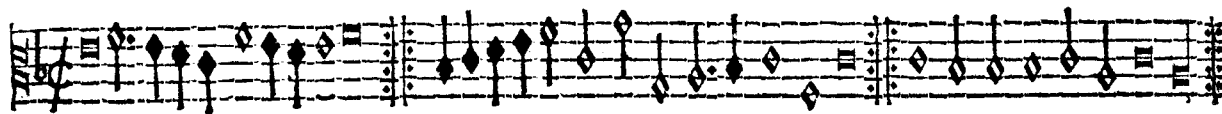
SVPERIVS ET TENOR



Pauanne, l'Admiral.



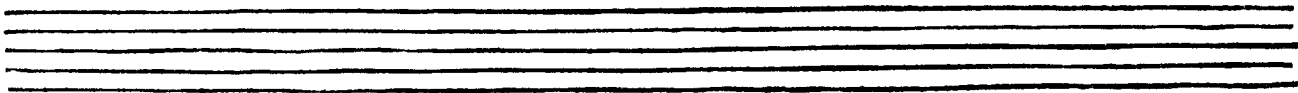
Gaillarde.



Tenor. Pauanne.



Gaillarde.



CONTRATENOR ET BASSVS.

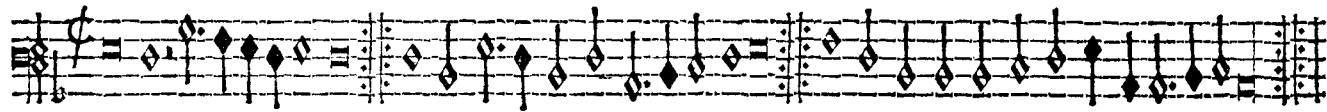
V.



Pause.



Gaillarde.



Basses. Pause.



Basses. Gaillarde.

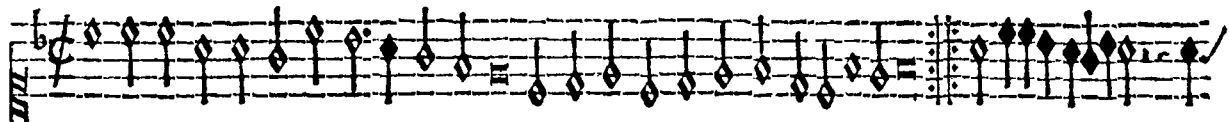


Pause.

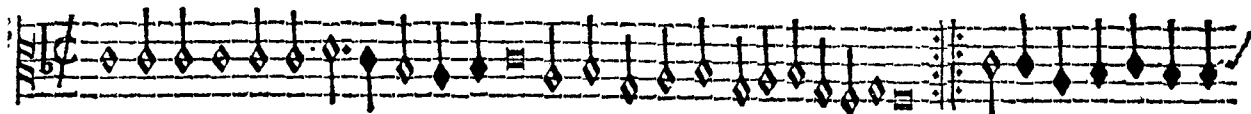
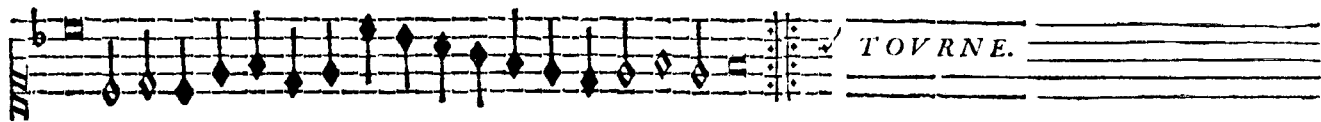


Gaillarde.

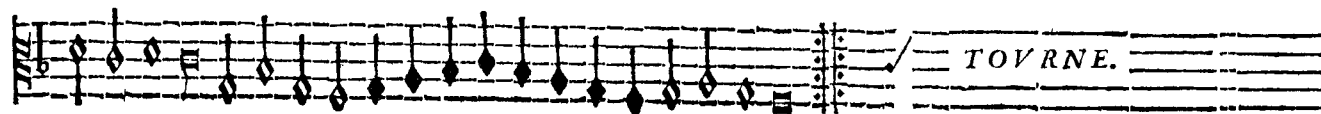
SUPERIORS ET TENOR.



Pauanne de la guerre.

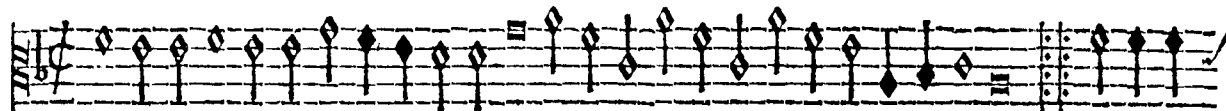


Tenor. Pauanne.

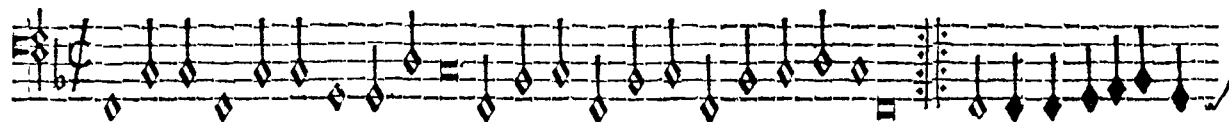
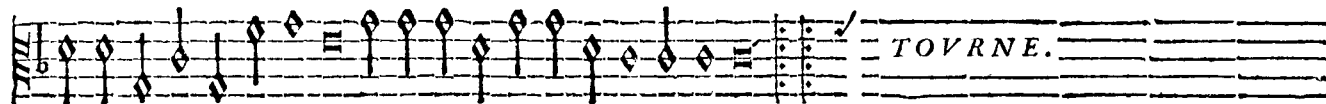
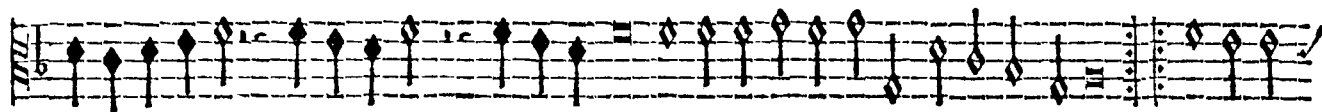


CONTRATENOR ET BASSVS.

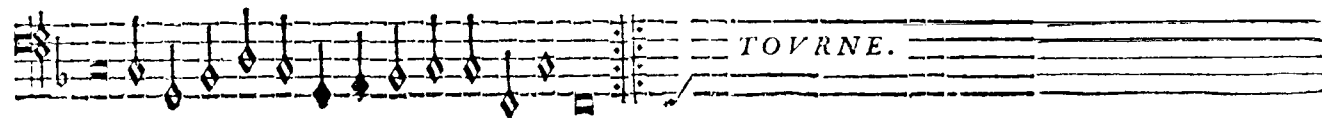
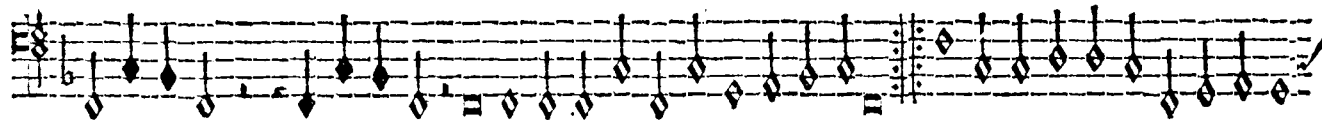
VI.



Pause.



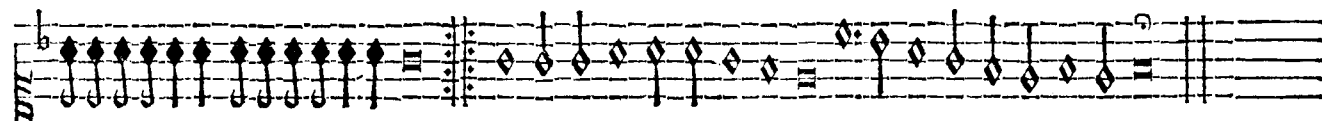
Bassus. Pause.



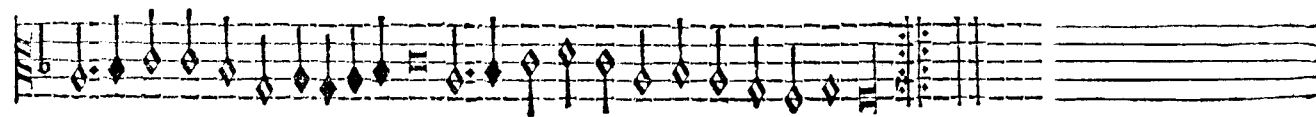
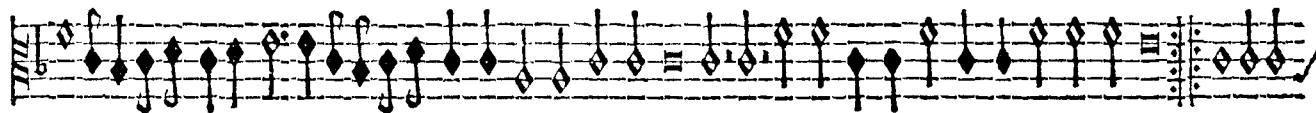
SVPERIVS ET TENOR.



Superius.

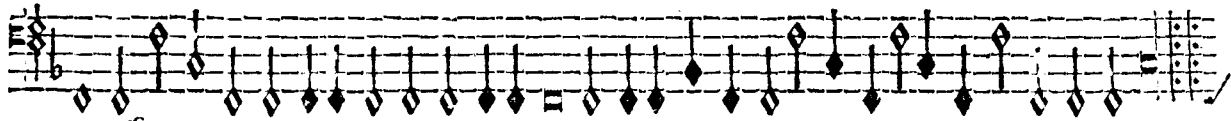
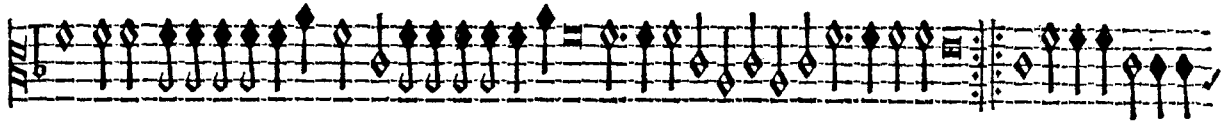


Tenor.

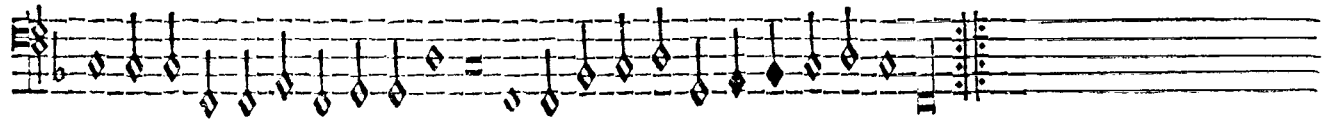


CONTRATENOR ET BASSVS.

VII.



Bassus.



SVPERIVS ET TENOR.

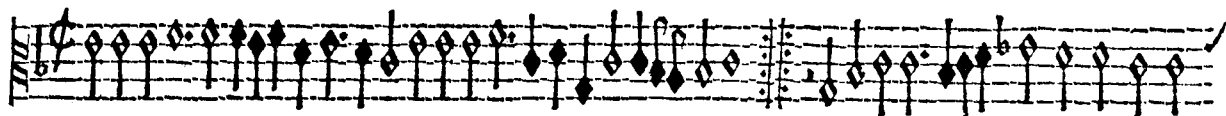


Gaillarde.

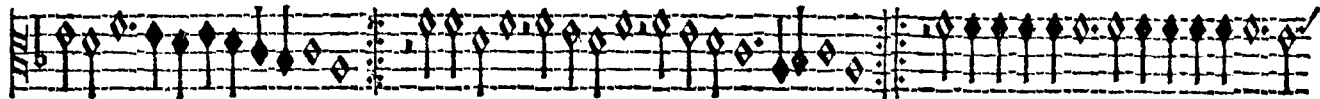


Tenor. Gaillarde

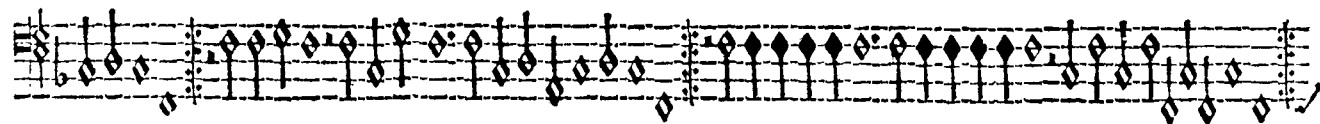




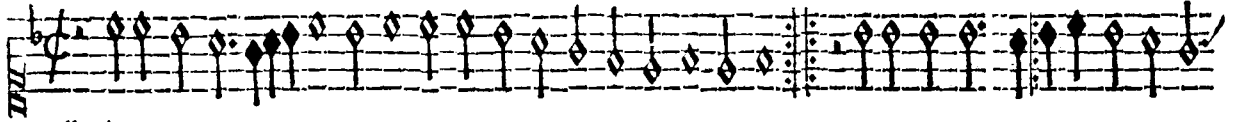
Gaillarde.



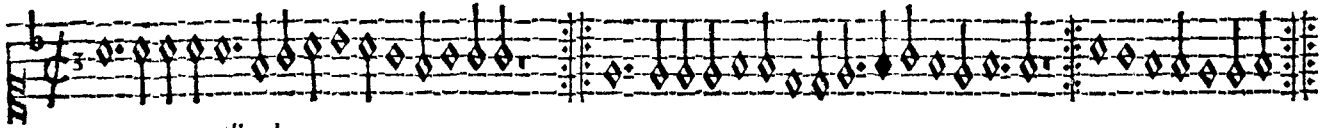
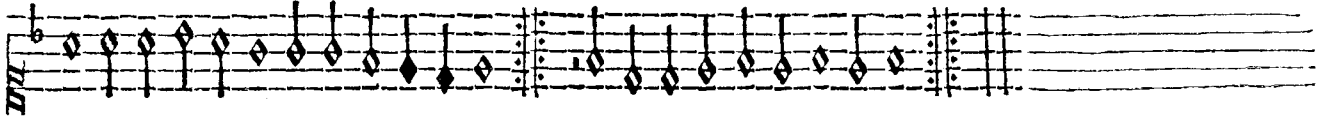
Bassus. Gaillarde.



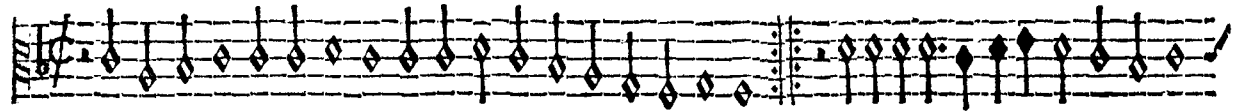
SUPERIUS ET TENOR.



Gaillarde.



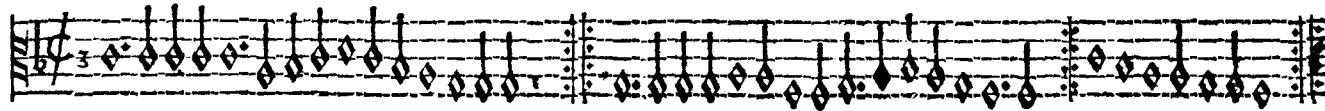
Gaillarde.



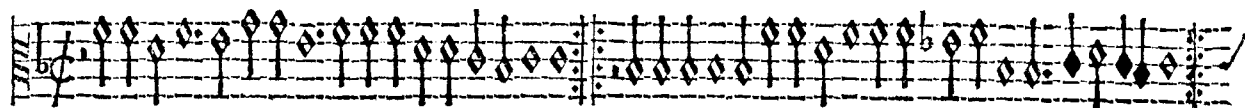
Tenor, Gaillards.



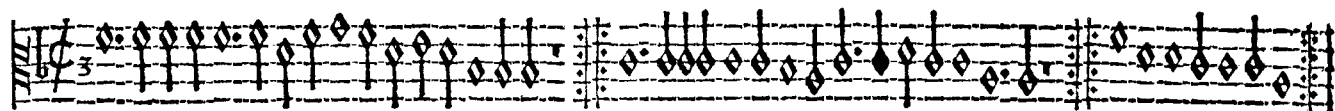
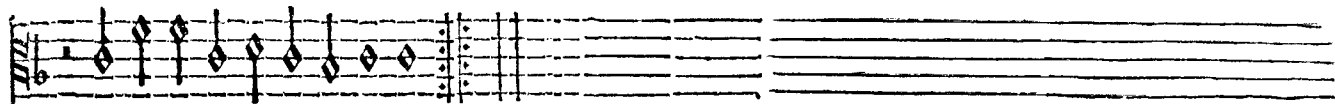
Gaillarde.



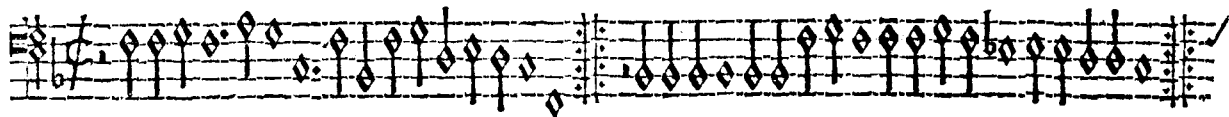
Gaillarde.



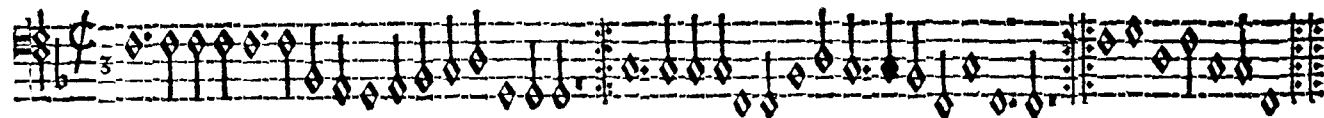
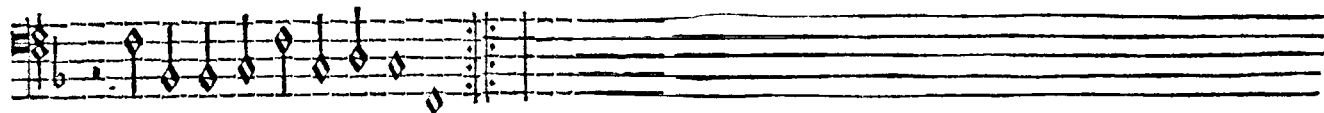
Gaillarde.



Gaillarde.



Bassus. Gaillarde.



Gaillarde.

SUPERIUS ET TENOR.

A single musical staff in G-clef (treble clef) with a key signature of one flat (B-flat). The staff contains a sequence of notes, including quarter, eighth, and sixteenth notes, with some beamed together. The piece concludes with a double bar line and a repeat sign.

branse simple 1.

A single musical staff in G-clef (treble clef) with a key signature of one flat (B-flat). The staff contains a sequence of notes, including quarter, eighth, and sixteenth notes, with some beamed together. The piece concludes with a double bar line and a repeat sign.

A set of three empty musical staves, consisting of three parallel horizontal lines.

A single musical staff in G-clef (treble clef) with a key signature of one flat (B-flat). The staff contains a sequence of notes, including quarter, eighth, and sixteenth notes, with some beamed together. The piece concludes with a double bar line and a repeat sign.

branse simple 1.

A single musical staff in G-clef (treble clef) with a key signature of one flat (B-flat). The staff contains a sequence of notes, including quarter, eighth, and sixteenth notes, with some beamed together. The piece concludes with a double bar line and a repeat sign.

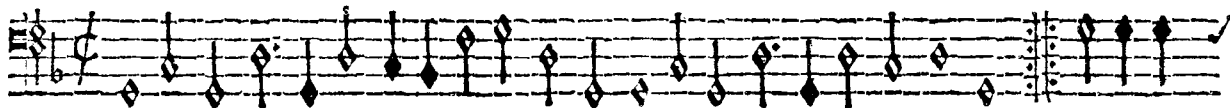
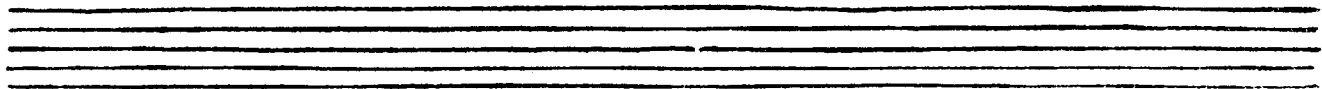
A set of three empty musical staves, consisting of three parallel horizontal lines.

CONTRATENOR ET BASSVS.

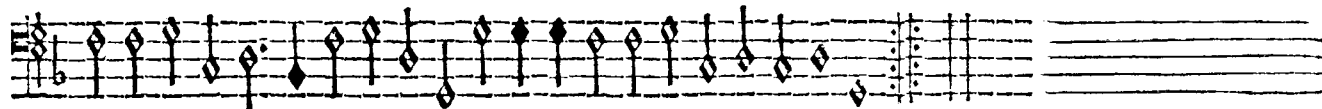
X.



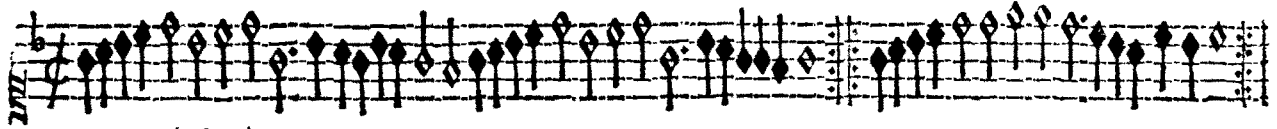
bransle simple I.



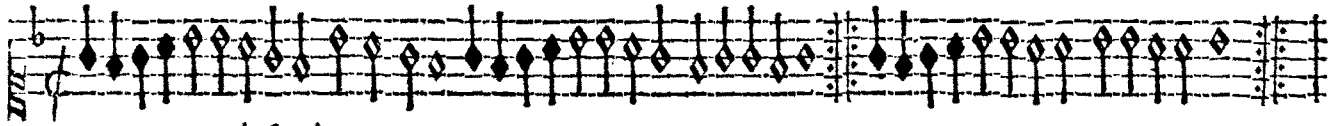
bransle simple I.



SUPEIUS ET TENOR.



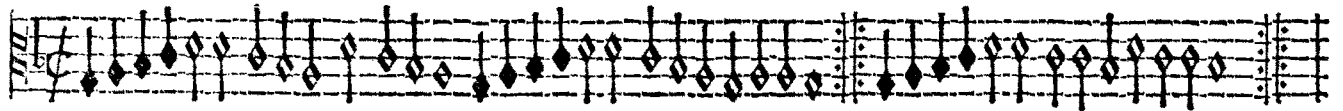
Bransle simple II.



Bransle simple III.



Bransle simple II.



Bransle simple III.

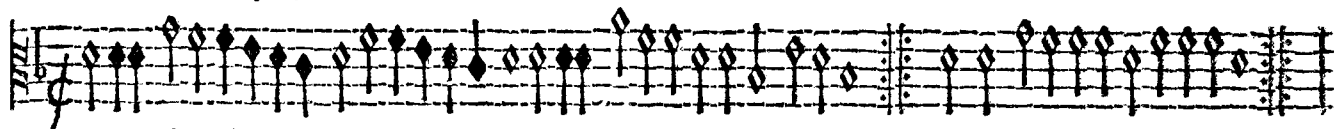


CONTRATENOR ET BASSVS.

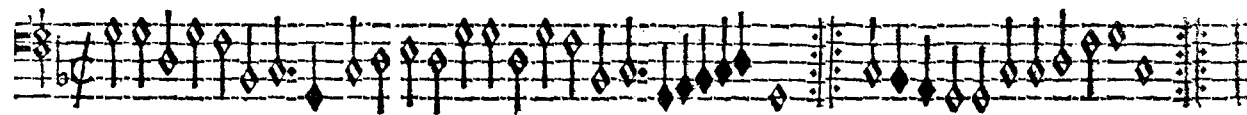
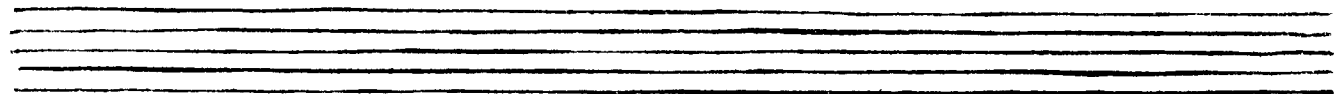
XI.



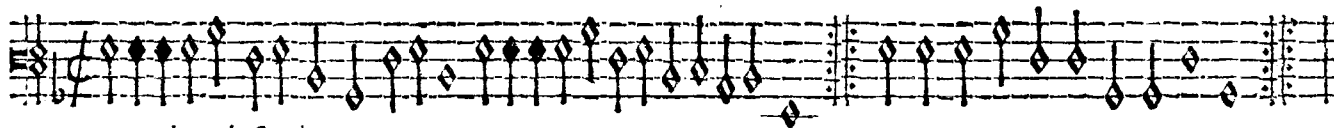
Bransle simple II.



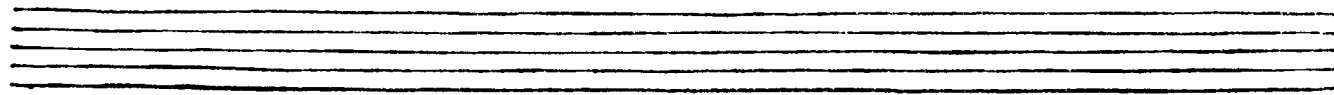
bransle simple III.



bransle simple II.



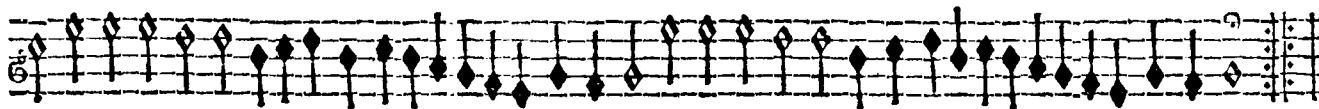
bransle simple III.



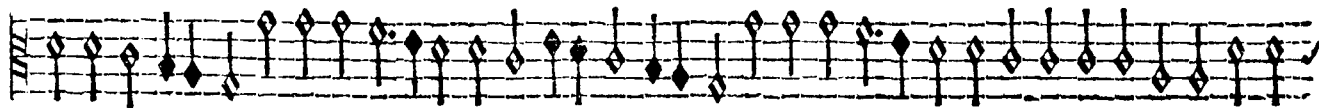
SUPERIUS ET TENOR.



brassle simple IIII.

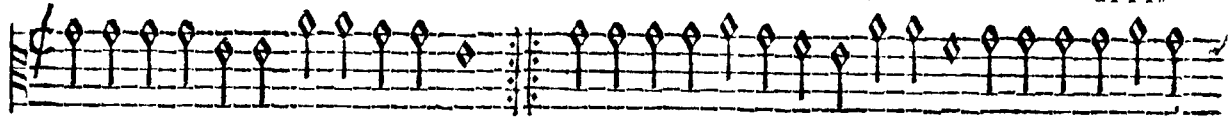


brassle simple IIII.

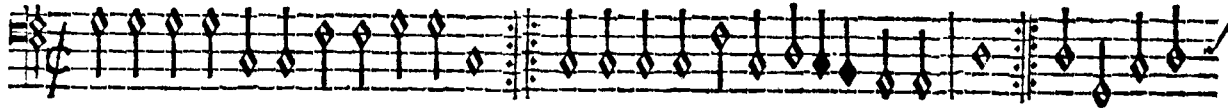
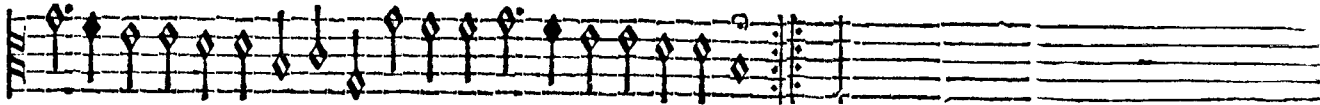
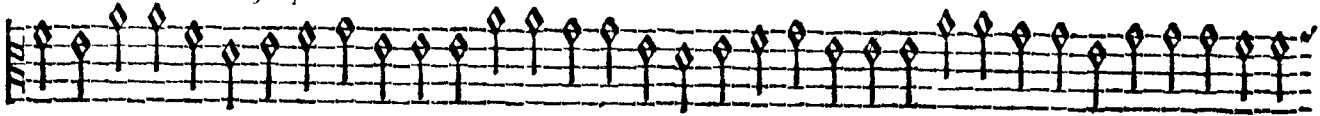


CONTRATENOR ET BASSVS.

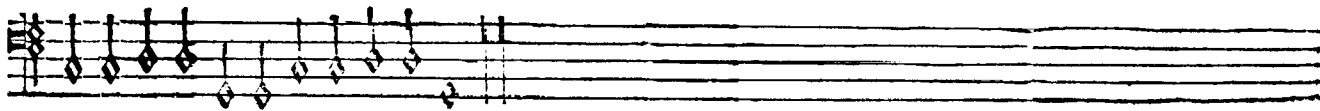
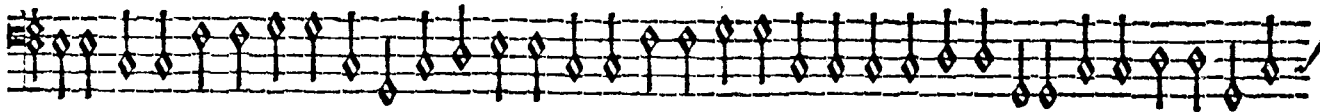
XII.



bransle simple IIII.



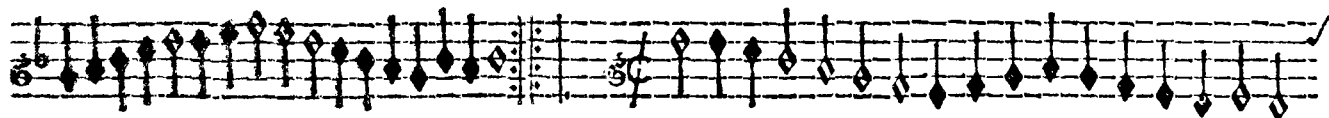
bransle simple IIII.



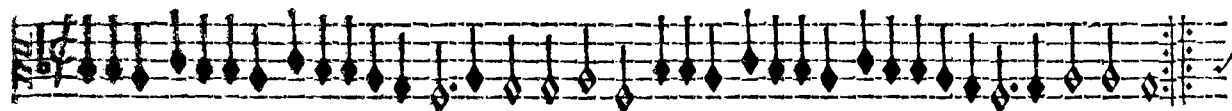
SVPERIVS ET TENOR



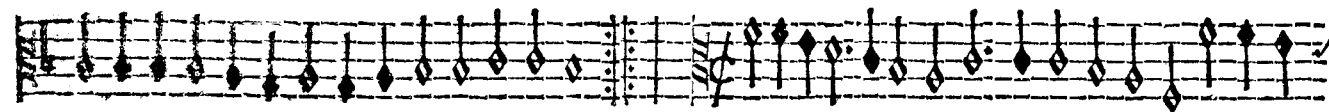
Branle simple V.



Branle simple VI.



Branle simple V.

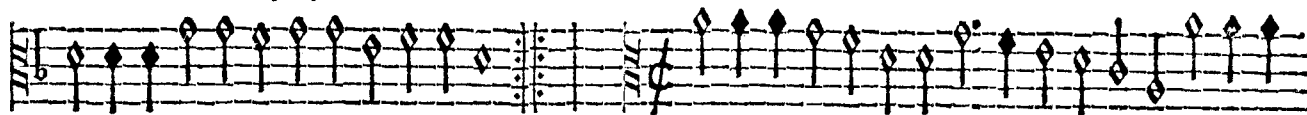


Branle simple VI.

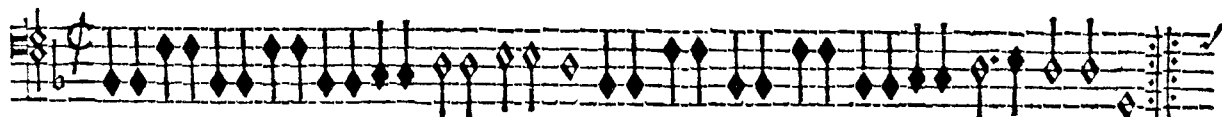
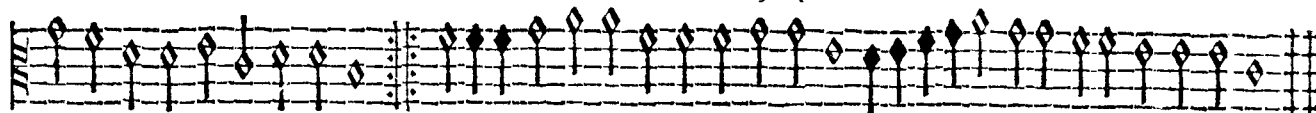




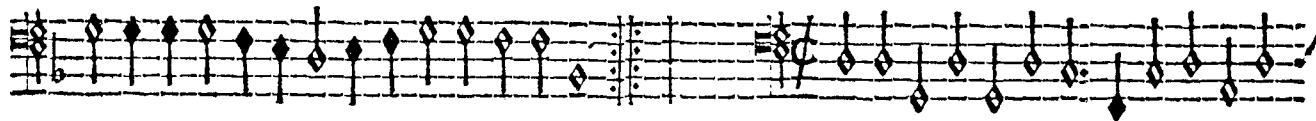
Bransle simple.



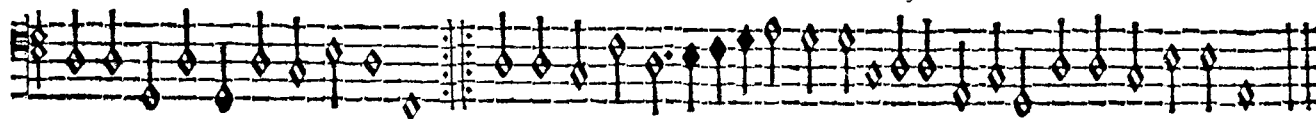
bransle simple.



Bassus. bransle simple.



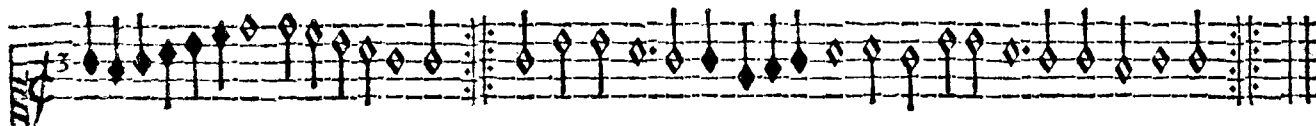
bransle simple.



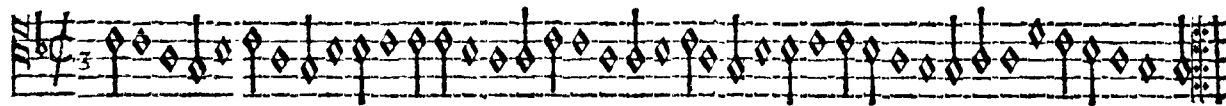
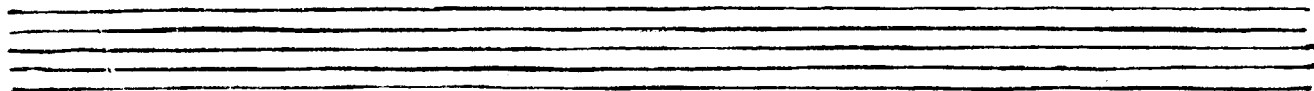
SVPERIVS ET TENOR.



Bransle gay I.



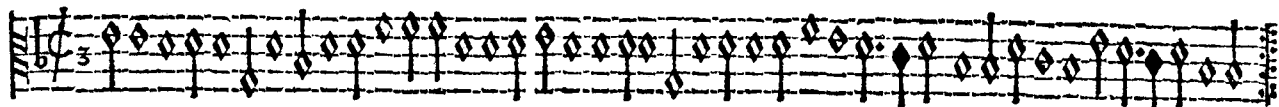
bransle gay II.



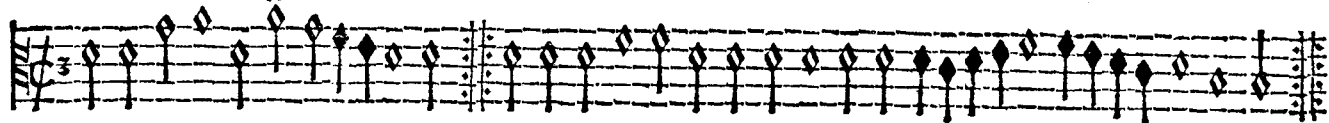
Tenor. bransle gay I.



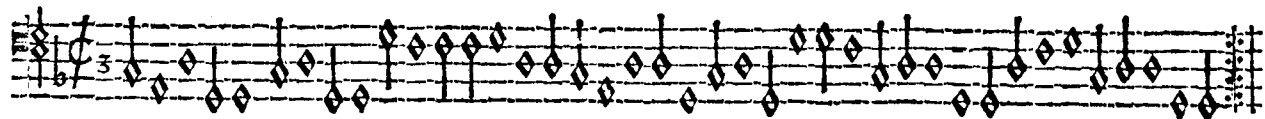
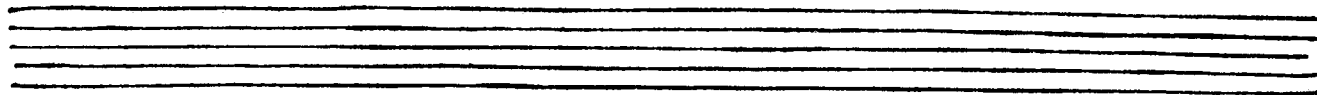
bransle gay II.



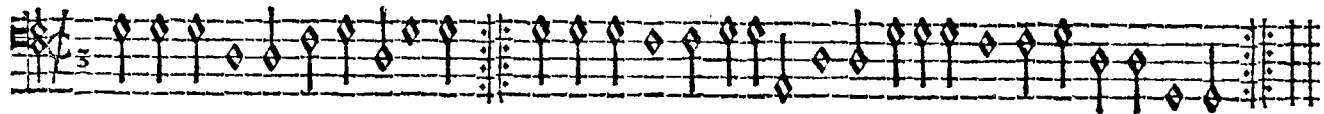
Bransle gay. I.



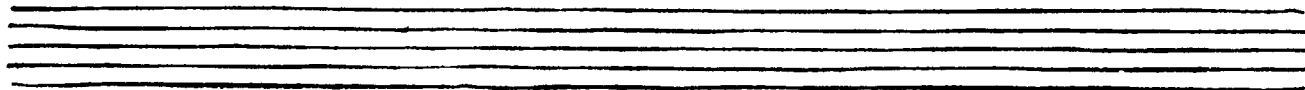
bransle gay II.



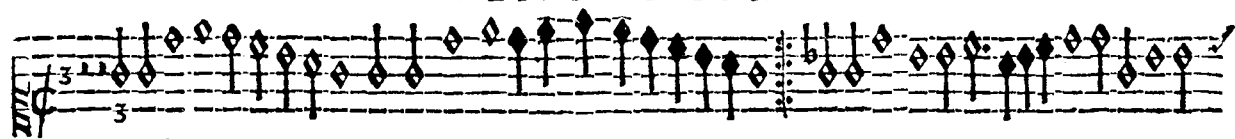
Bassus. bransle gay I.



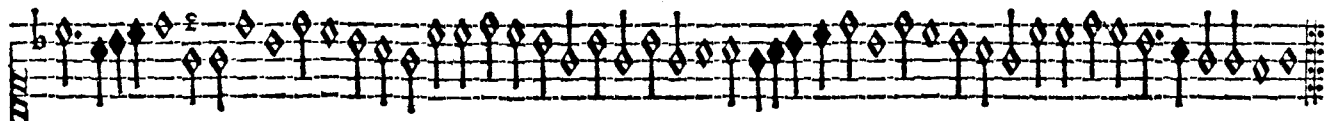
bransle gay II.



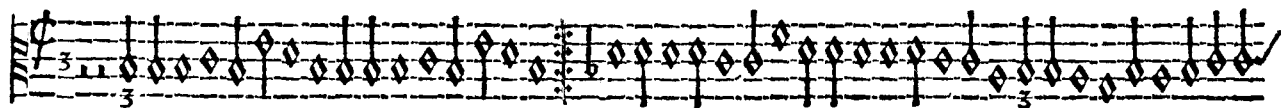
SUPEIUS ET TENOR.



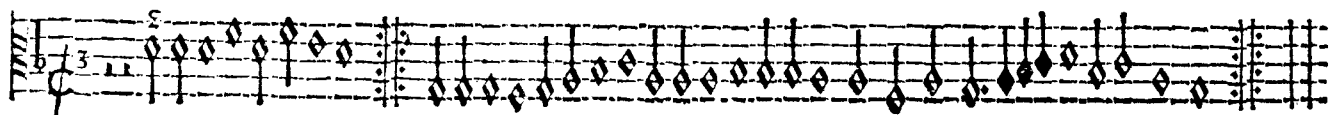
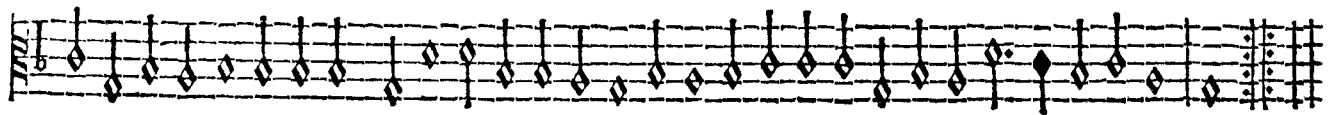
Bransle gay III.



bransle gay IIII.



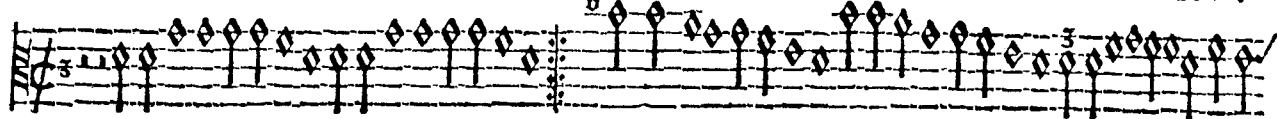
Tenor. bransle gay III.



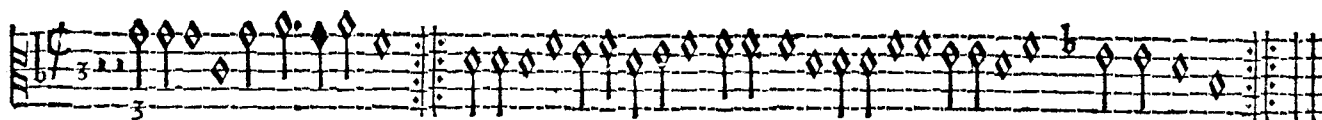
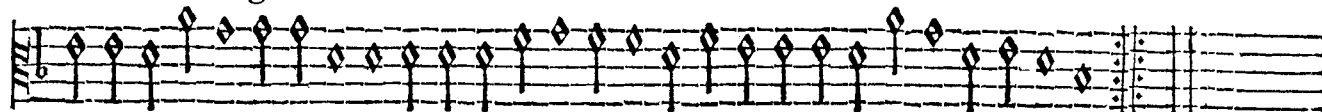
bransle gay IIII.

CONTRATENOIR \flat ET BASSUS.

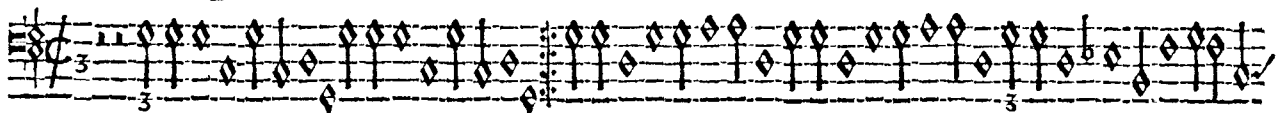
XV.



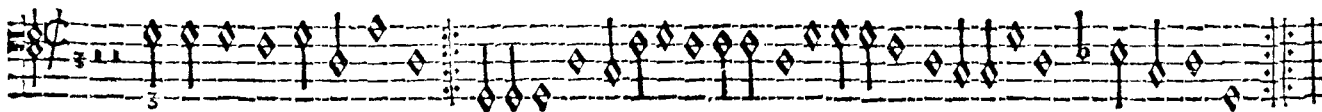
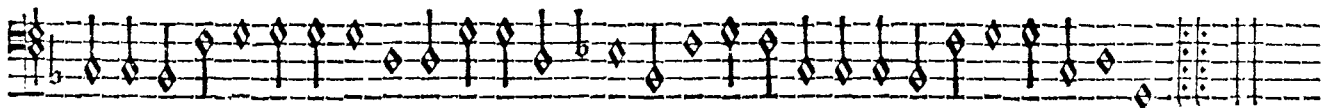
bransle gay III.



bransle gay IIII.

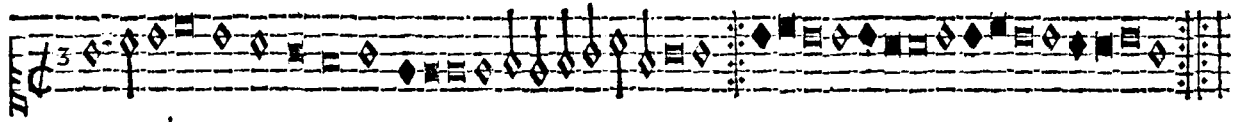


Bassus. bransle gay III.

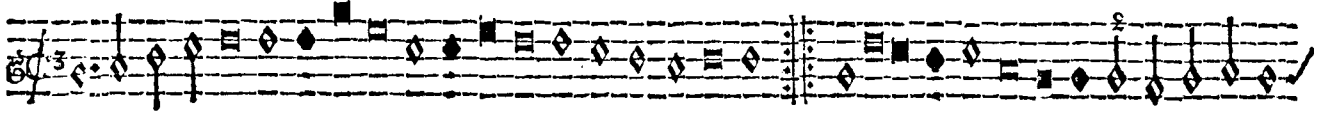


bransle gay IIII.

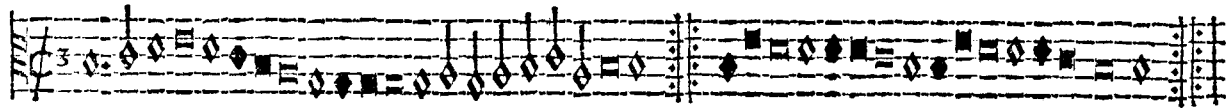
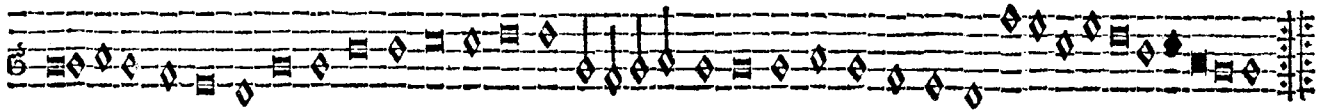
SVPERIVS ET TENOR.



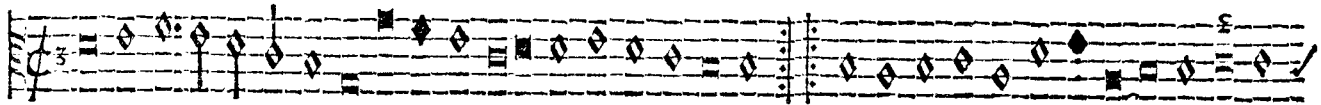
Bransle gay V.



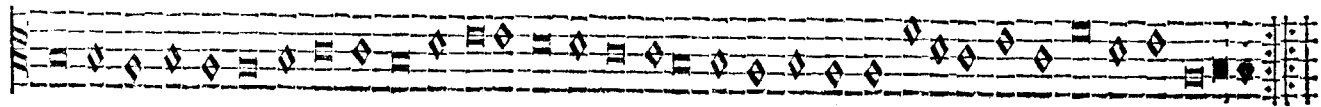
bransle gay VI.



Tenor. bransle gay V.



bransle gay VI.

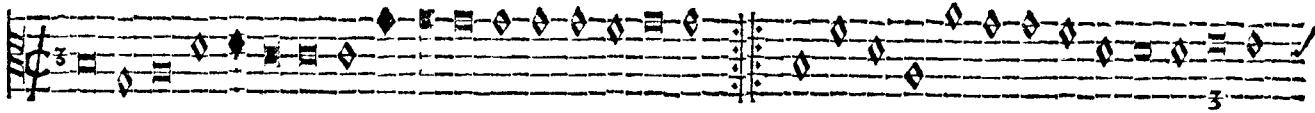


CONTRATENOR ET BASSVS.

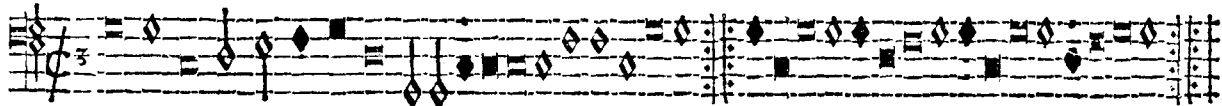
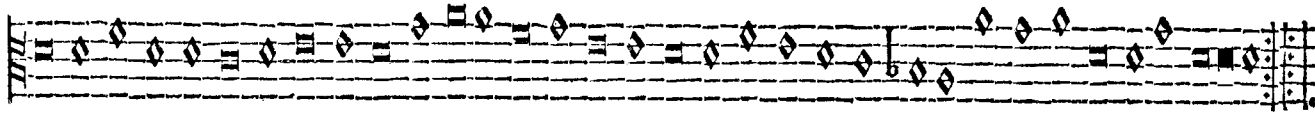
XVI.



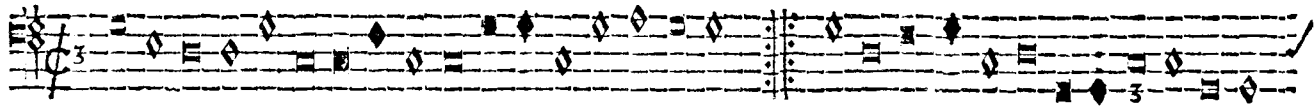
Bransle gay V.



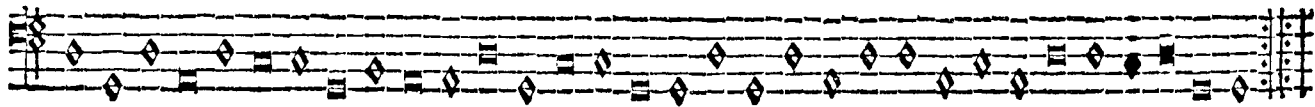
bransle gay VI.



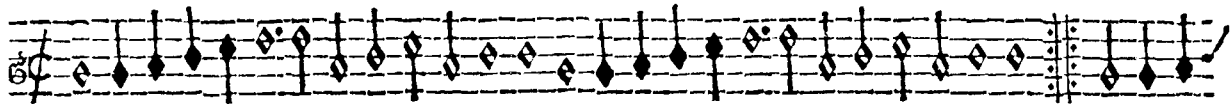
Bassus. bransle gay V.



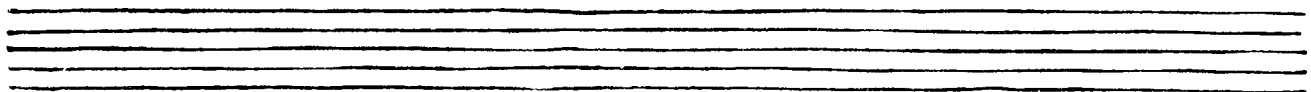
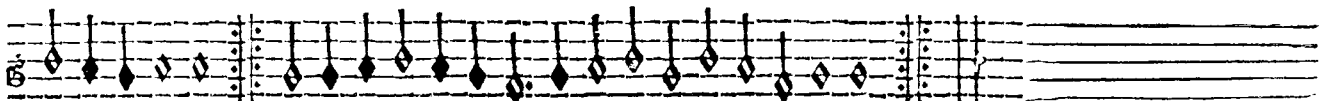
bransle gay VI.



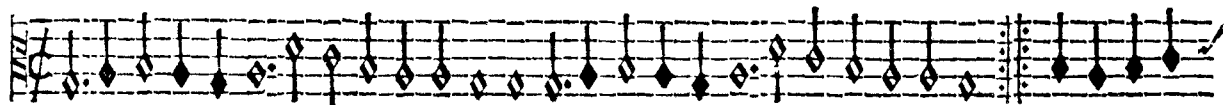
SVPERIVS ET TENOR



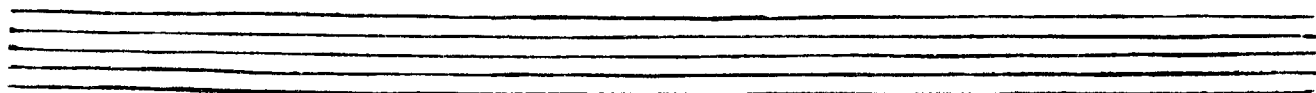
Almande I.



Tenor.



Almande I.

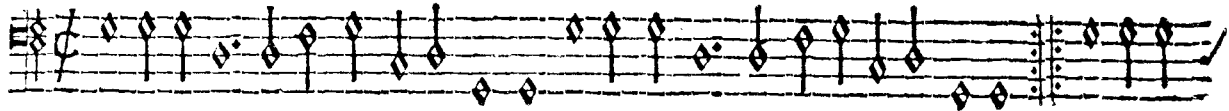
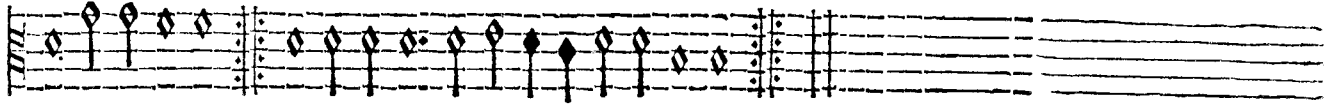


CONTRATENOR ET BASSVS.

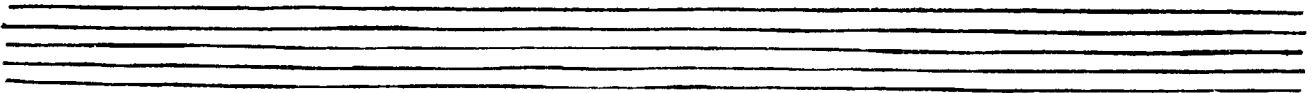
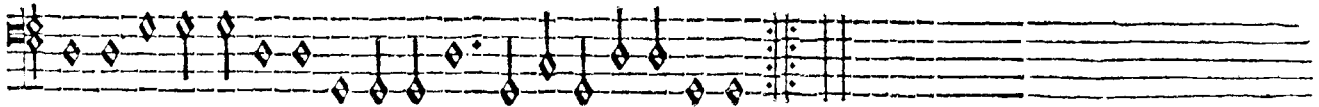
XVII.



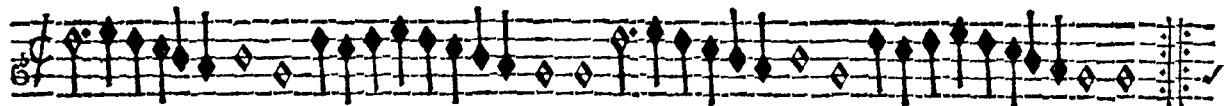
Almande.



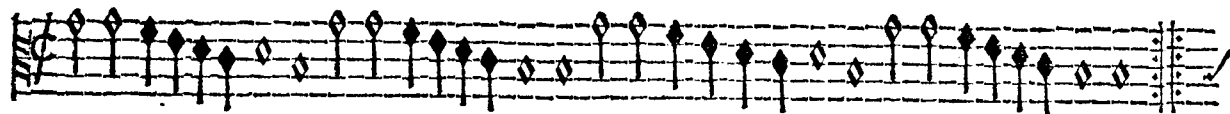
Almande.



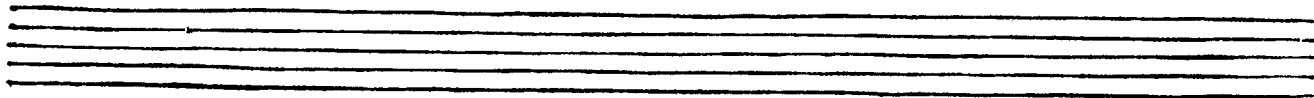
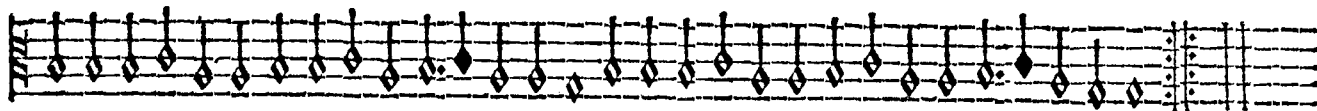
SVPERIVS ET TENOR.



Almande II.

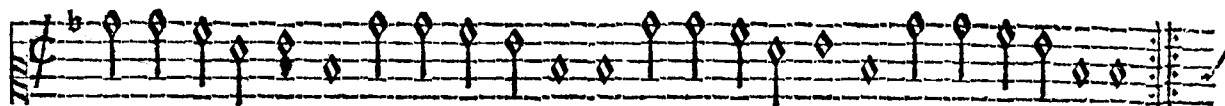


Tenor. Almande II.

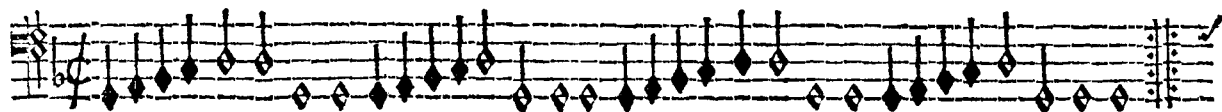
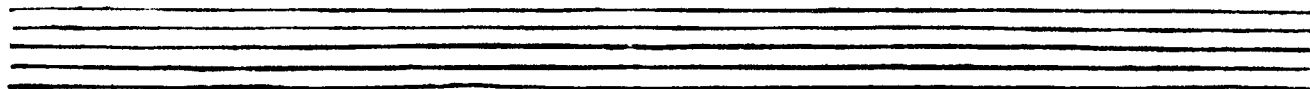
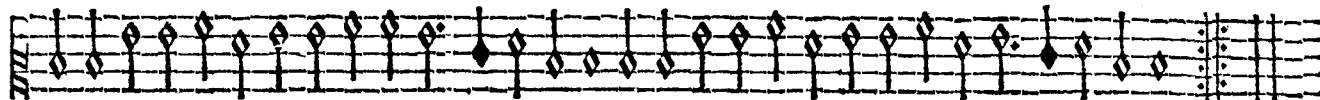


CONTRATENOR ET BASSVS.

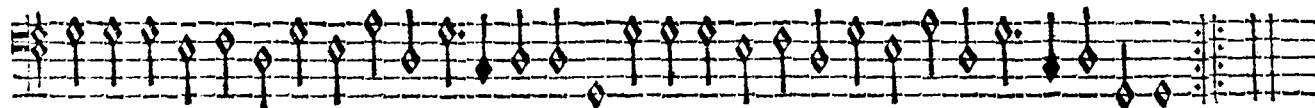
XVIII.



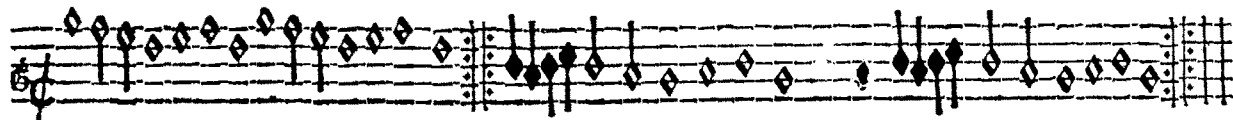
Almande II.



Bassus. Almande II.



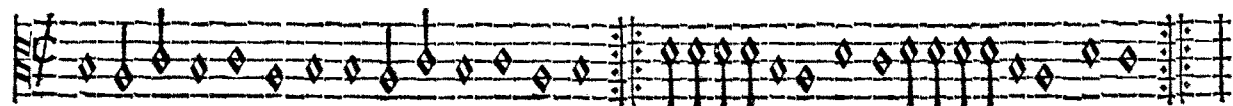
SVPEIVS ET TENOR.



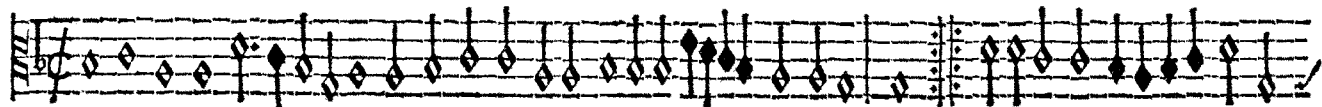
Almande III.



Almande IIIII.



Tenor, Almande III.

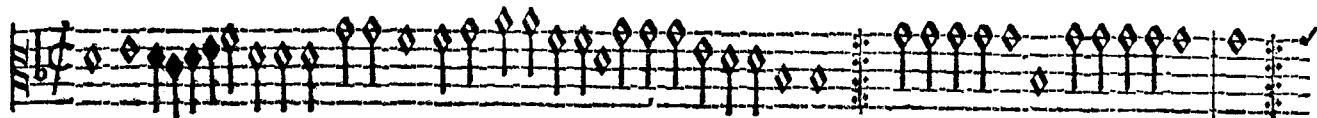


Almande IIIII.

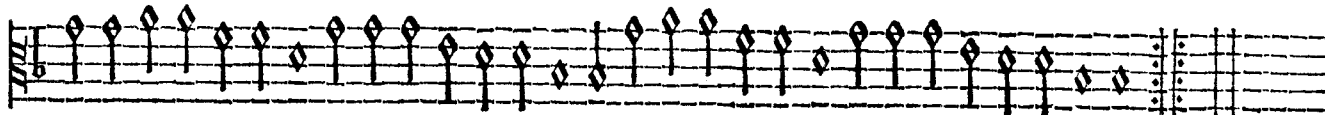




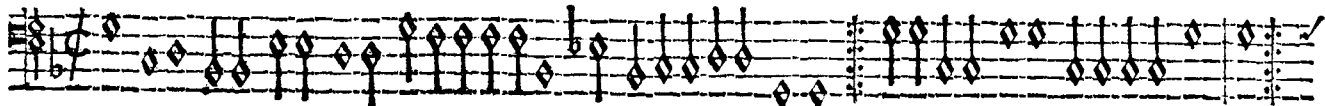
Almande III.



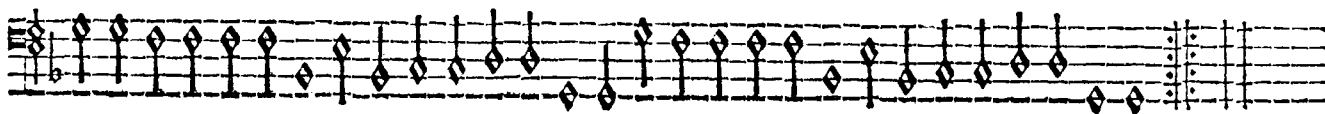
Almande IIIII.



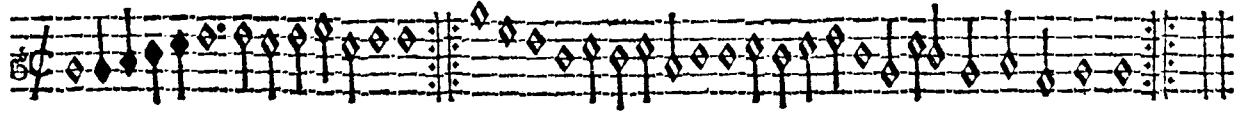
Bassus. Almande III..



Almande IIIII.



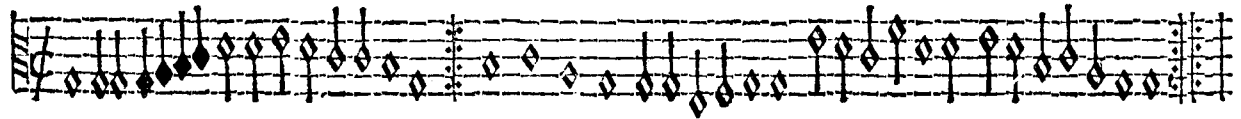
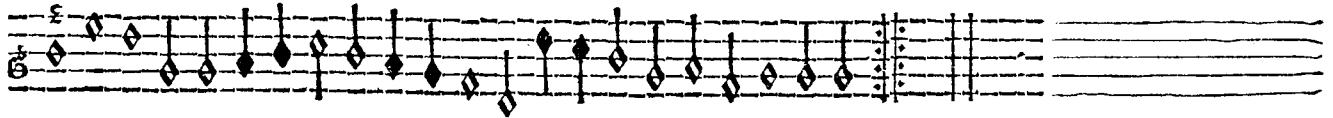
SUPERIUS ET TENOR.



Almande V.



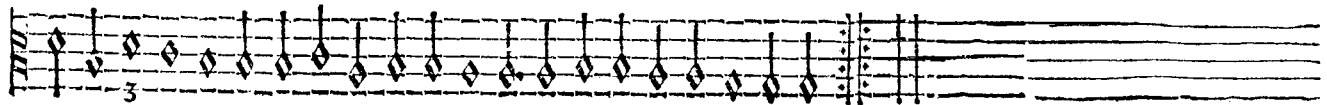
Almande VI.



Tenor Almande V.

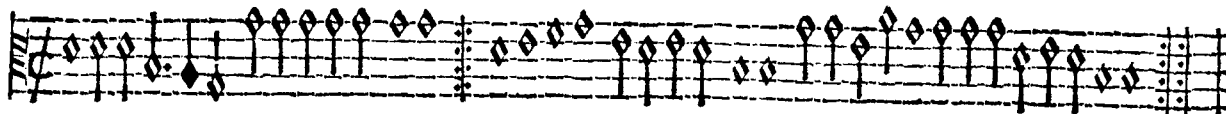


Almande VI.

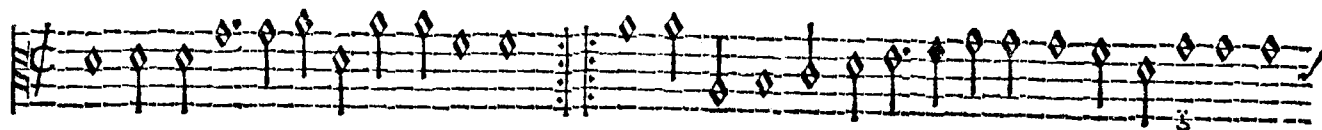


CONTRATENOR ET BASSUS.

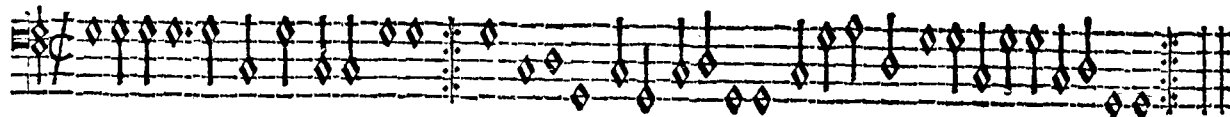
XX.



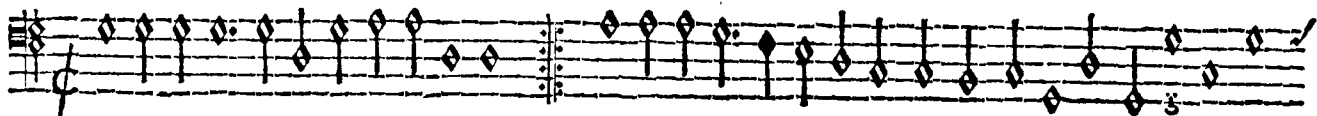
Almande V.



Almande VI.



Bassus. Almande VI.



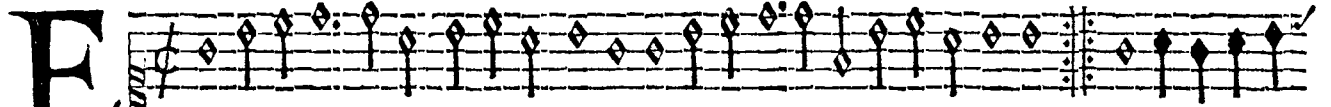
Almande VI.



SVPERIVS ET TENOR

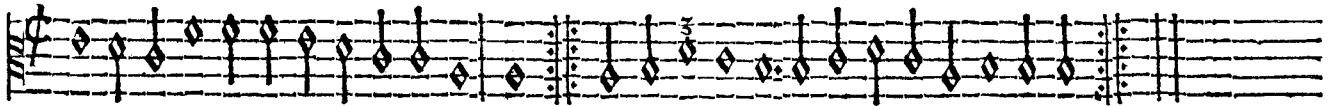
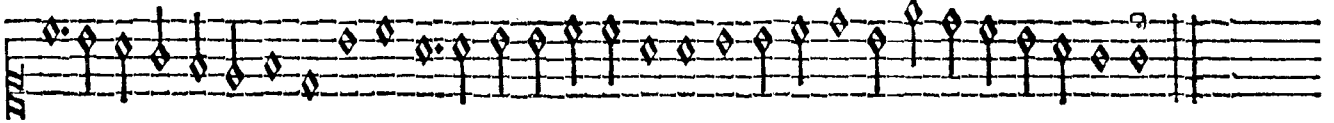


Almande. VII.

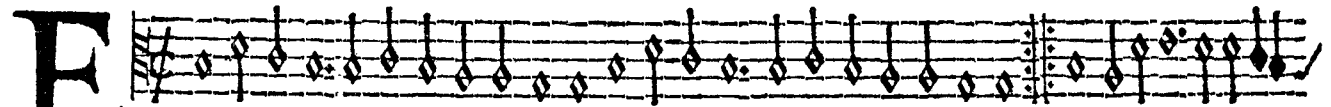


T d'ou venez vous ma dame Lucette,

Almande VIII.

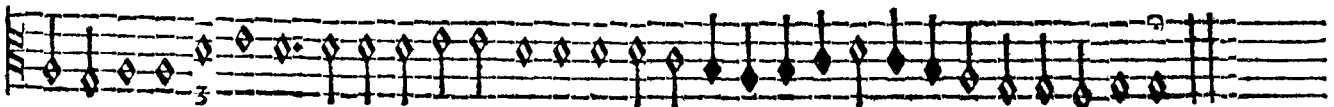


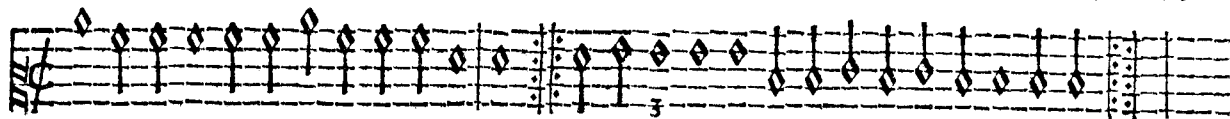
Tenor. Almande VII.



T d'ou venez vous ma dame Lucette.

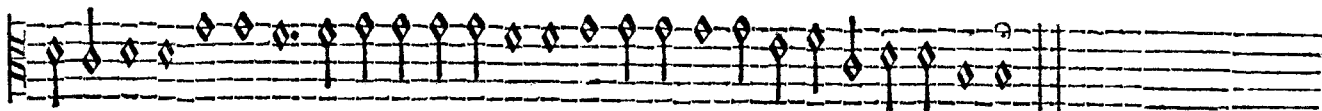
Almande VIII.





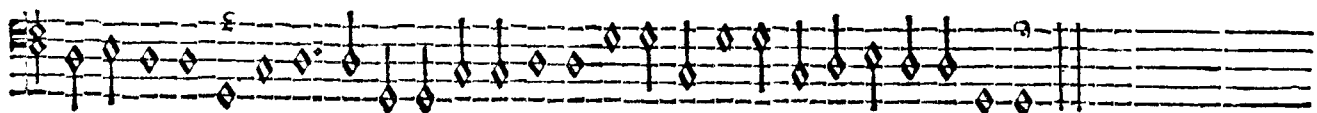
Almande. VII.

E T d'ou venez vous ma dame Lucette, *Almande VIII.*

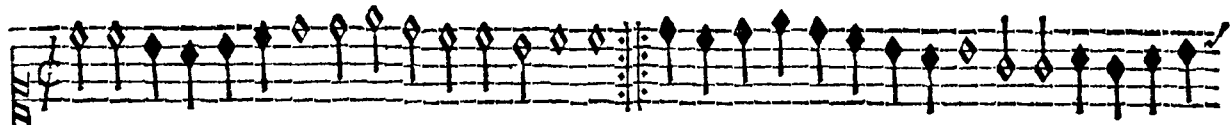


Bassus. Almande VII.

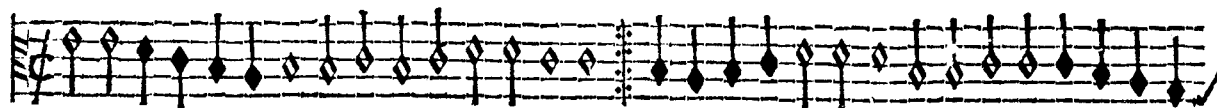
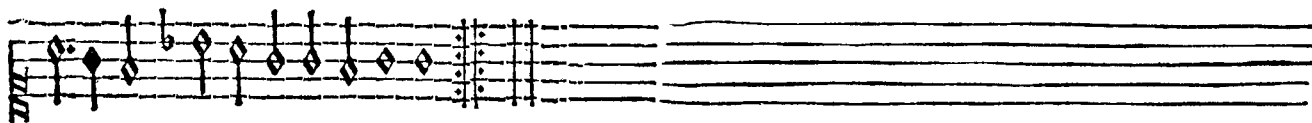
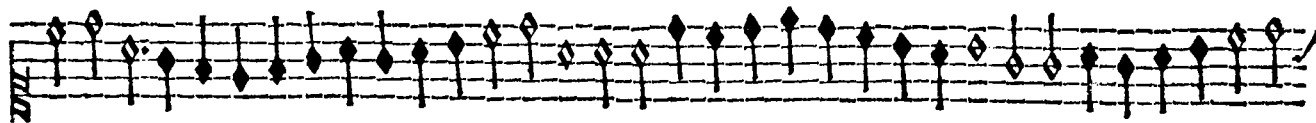
E T d'ou venez vous ma dame Lucette. *Almande VIII..*



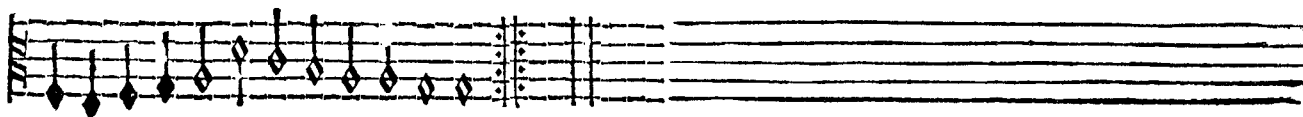
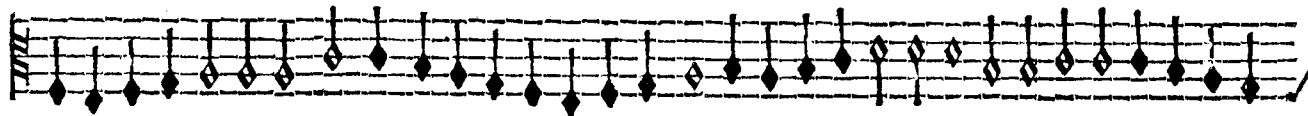
SVPERIVS ET TENOR.



Branle 1.

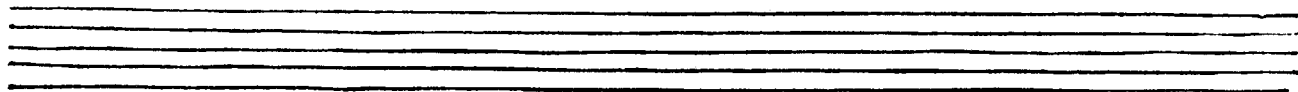
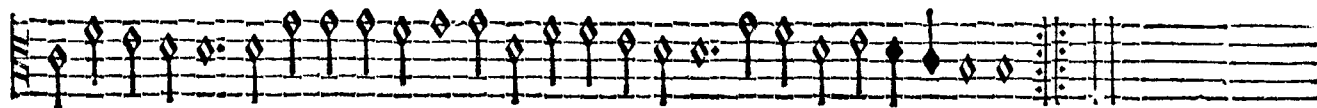


Tenor. branle 1.

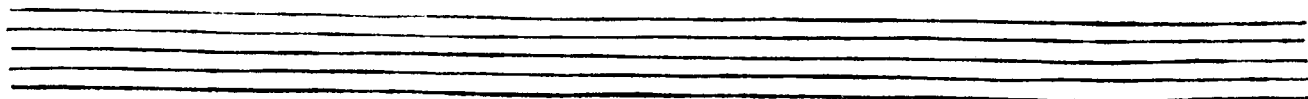
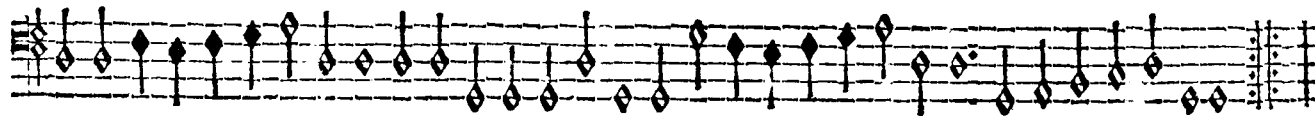




Bransle I.



Bassu. bransle I.



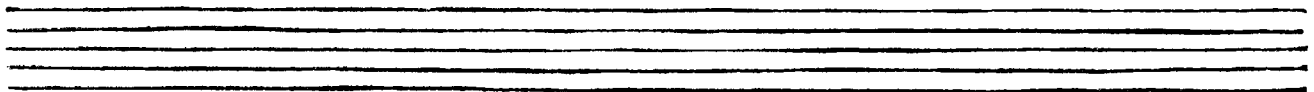
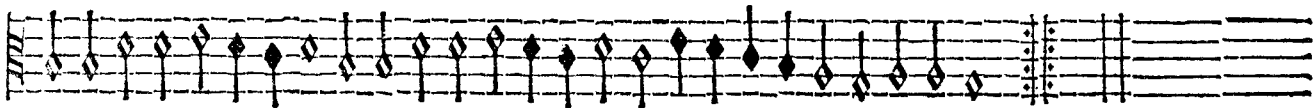
SUPEIUS ET TENOR.



Bransle II.

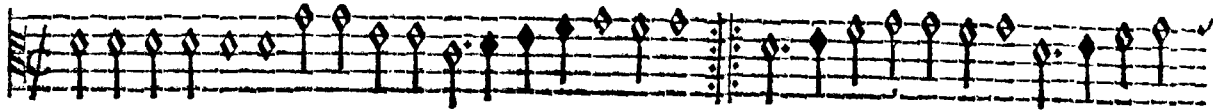


Tenor. Bransle II.

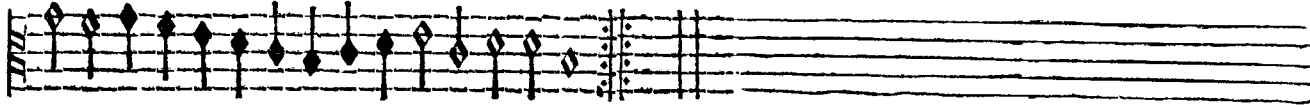


CONTRATENOR ET BASSVS.

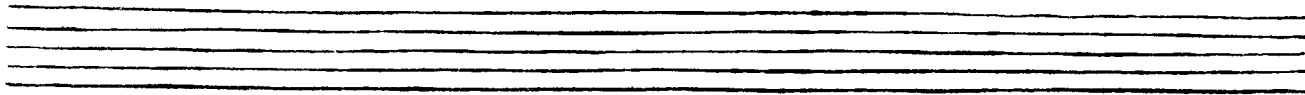
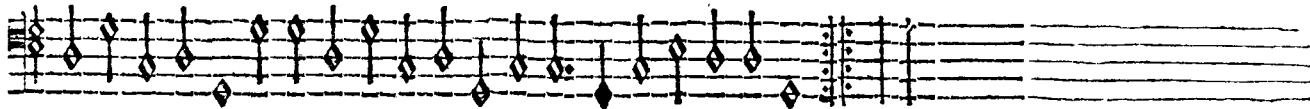
XXIII.



Bransle II.



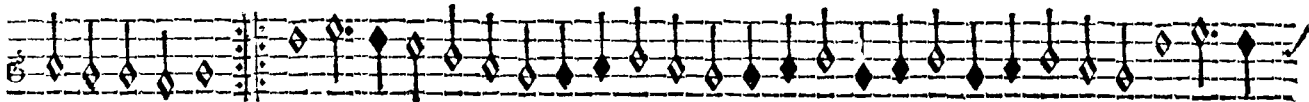
Bassus. bransle II.



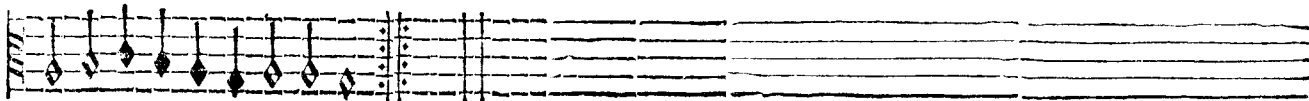
SUPERIUS ET TENOR.



bransle III.



Tenor, bransle III.

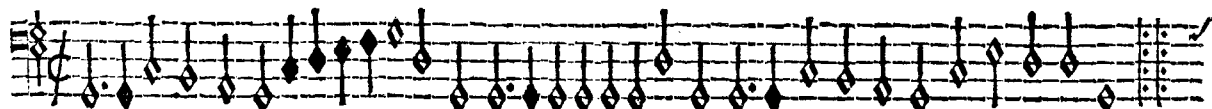
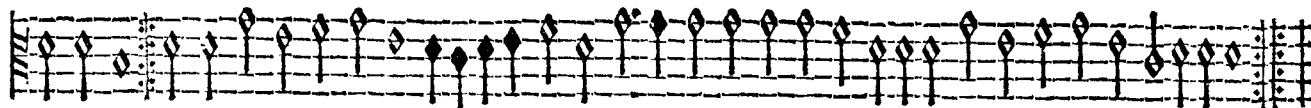


CONTRATENOR ET BASSVS.

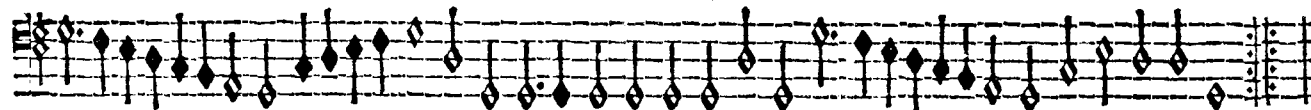
XXIII.



bransle III.



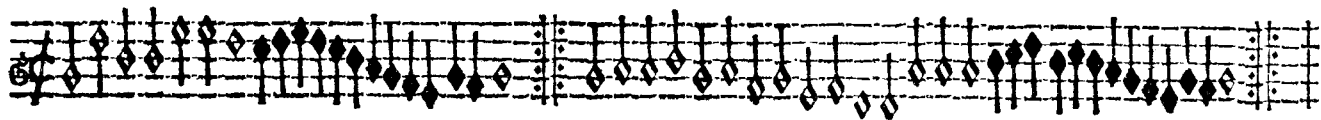
Bassus. bransle III.



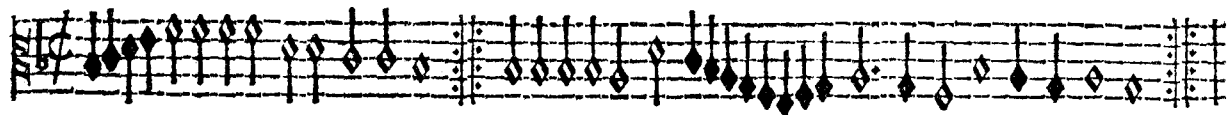
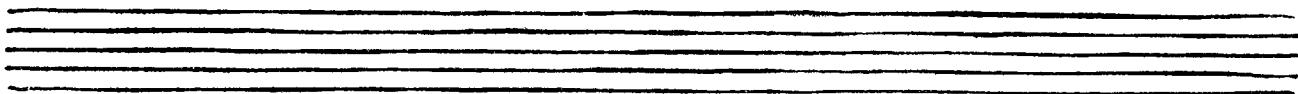
SUPERIUS ET TENOR



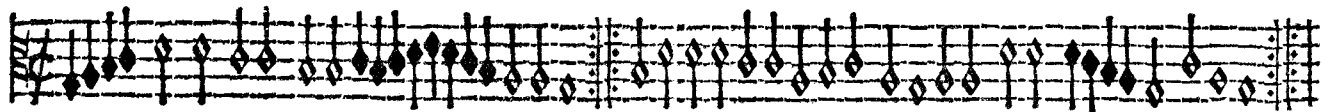
Bransle IIII.



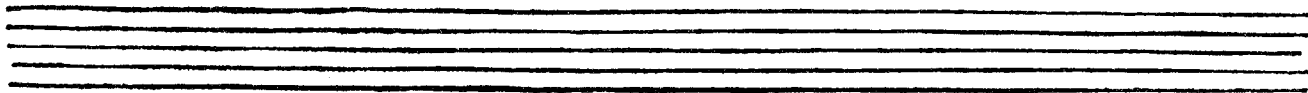
Bransle V.



Tenor IIII.



bransle V.

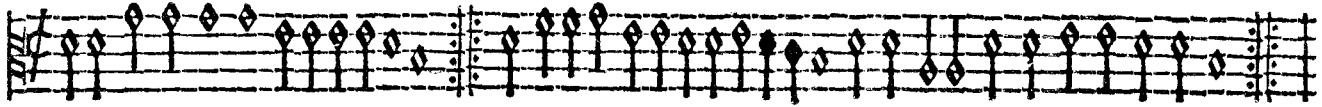


CONTRATENOR ET BASSVS.

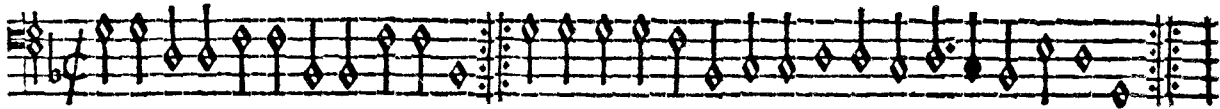
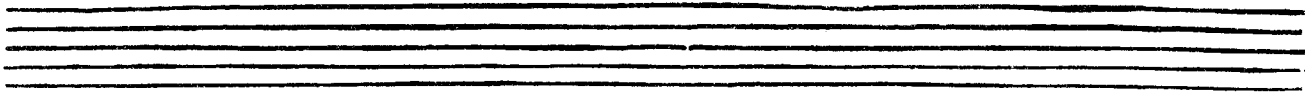
XXV.



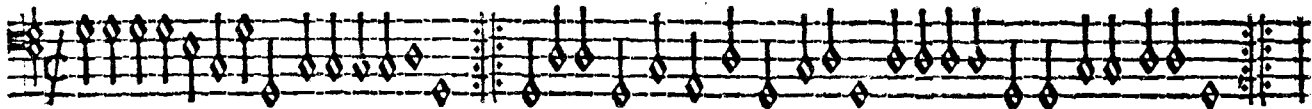
bransle IIIII.



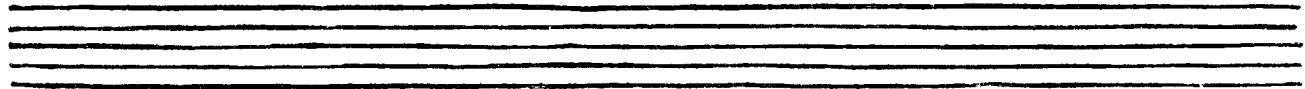
bransle V.



Bassus. bransle IIIII.



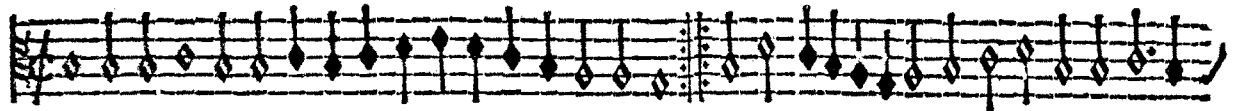
bransle V.



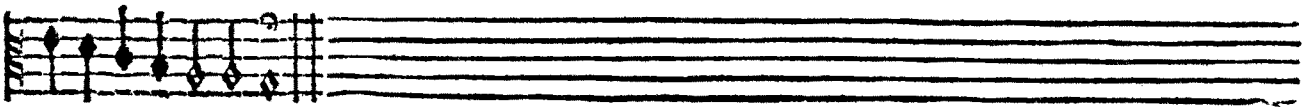
SVPERIVS ET TENOR.



Brassle VI.



brassle VI.

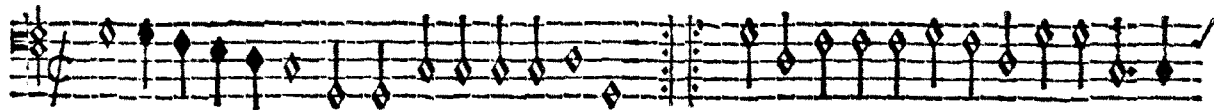
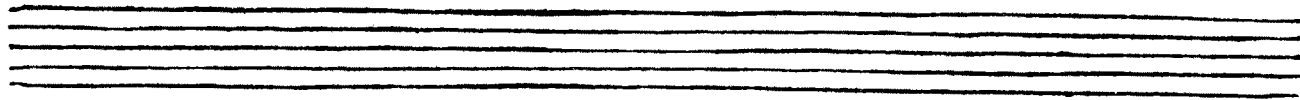
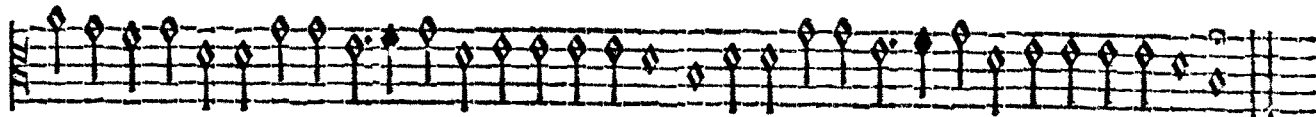


CONTRATENOR ET BASSVS.

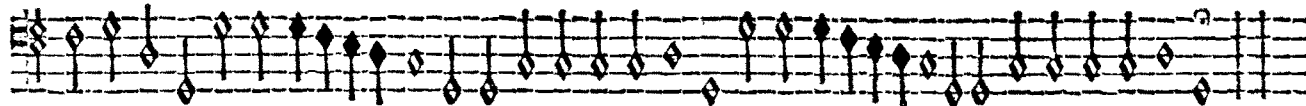
XXVI.



bransle VI.



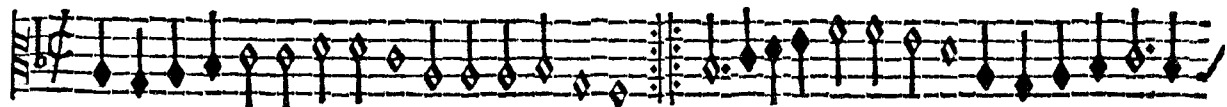
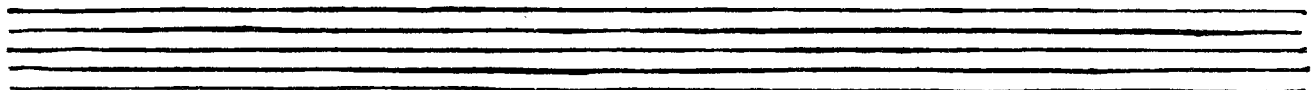
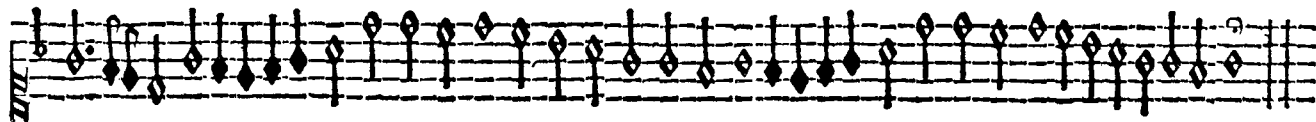
Bassus. bransle VI.



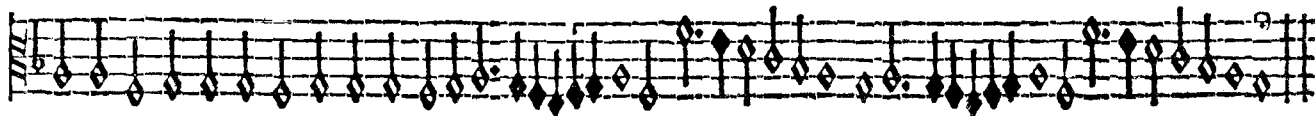
SUPERIUS ET TENOR.



Bransle VII.

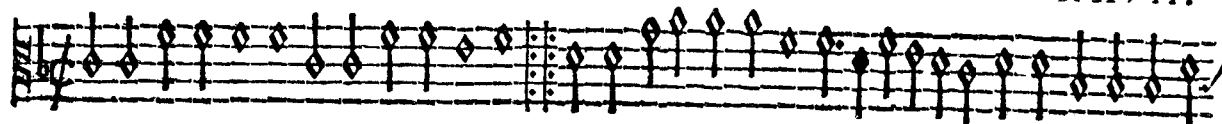


Tenor bransle VII.

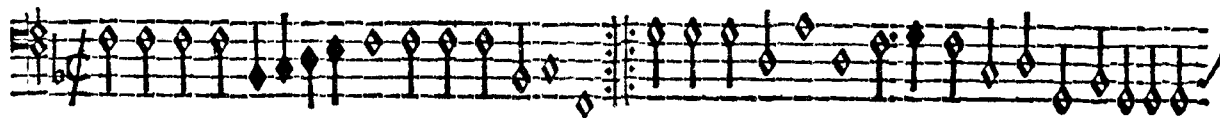
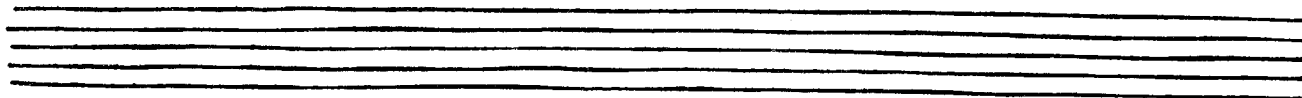


CONTRATENOR ET BASSVS.

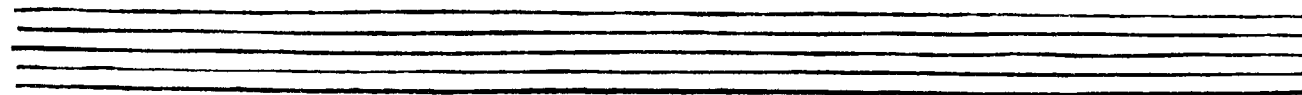
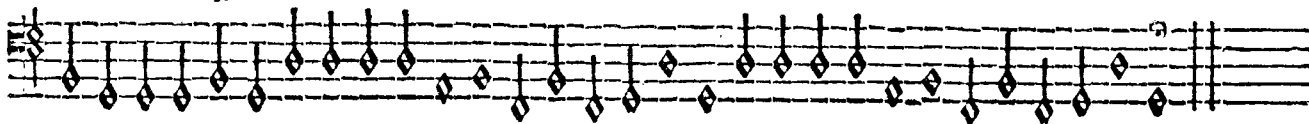
XXVII.



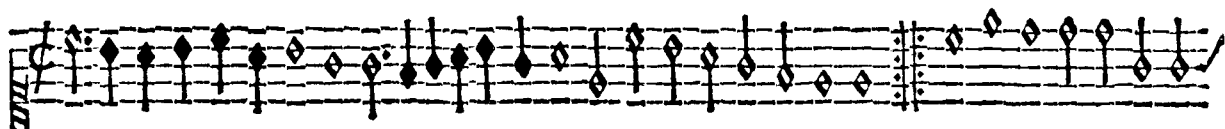
bransle VII.



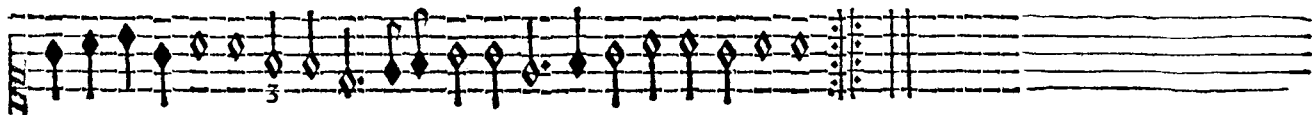
Bassus. bransle VII.



SVPERIVS ET TENOR.



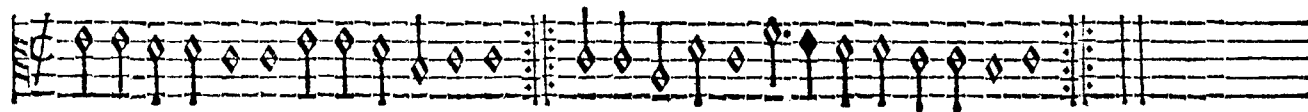
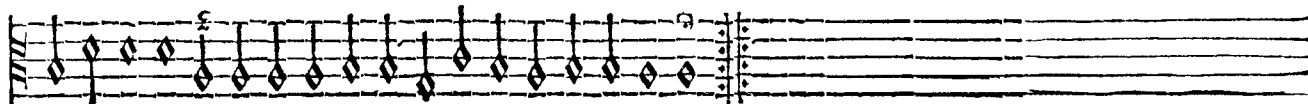
Bransle VIII.



bransle IX.



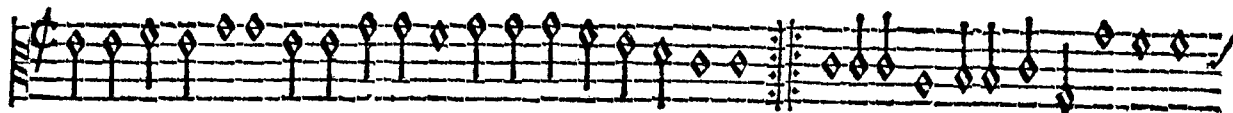
Tenor. Bransle VIII.



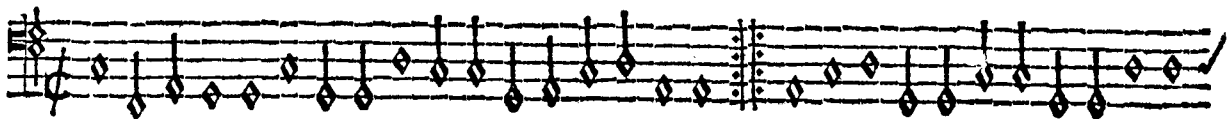
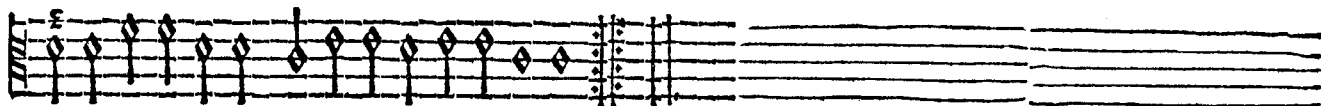
bransle IX.

CONTRATENOR ET BASSVS.

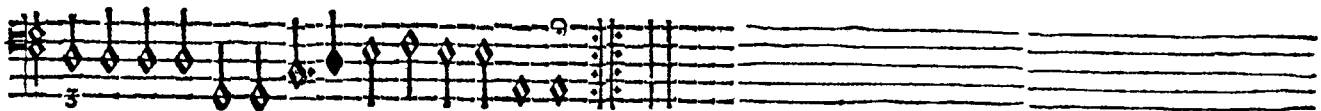
XXVIII.



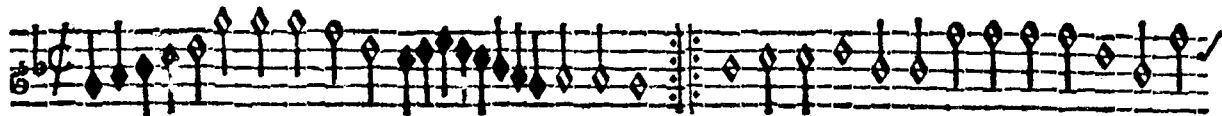
Branle VIII.



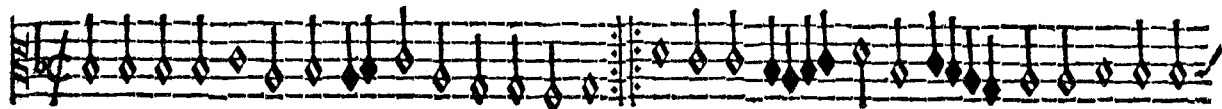
branse VIII.



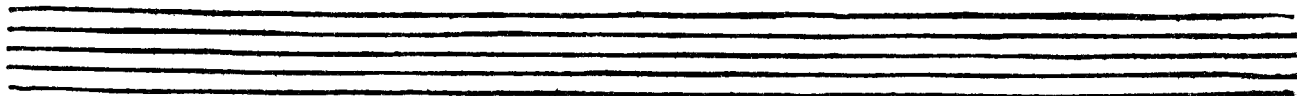
SUPERIUS ET TENOR



bransle X.



Tenor. bransle X.

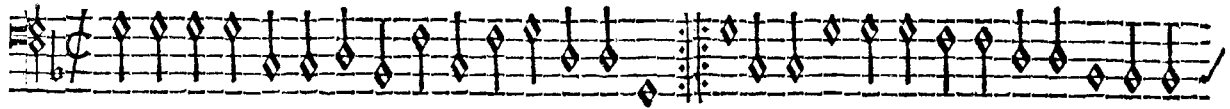
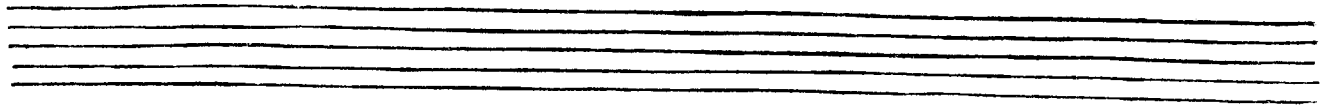
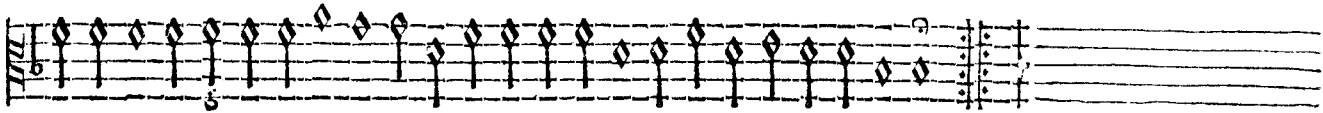


CONTRATENOR ET BASSVS.

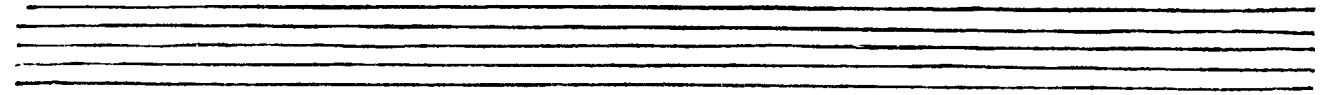
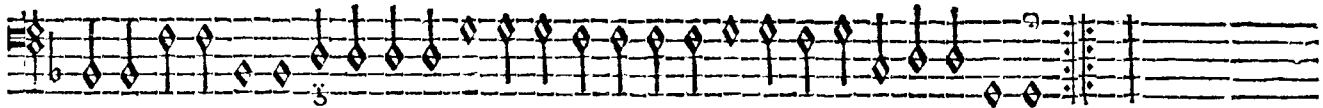
XXIX.



Bransle X.



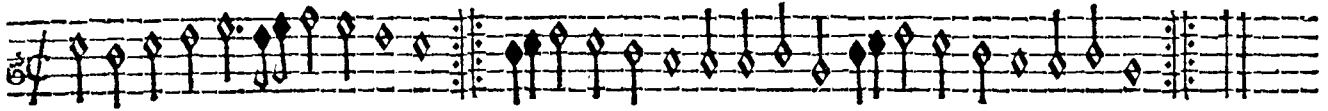
Bassus. bransle X.



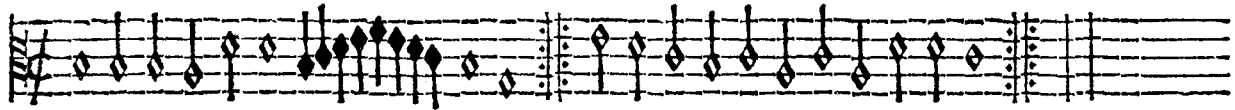
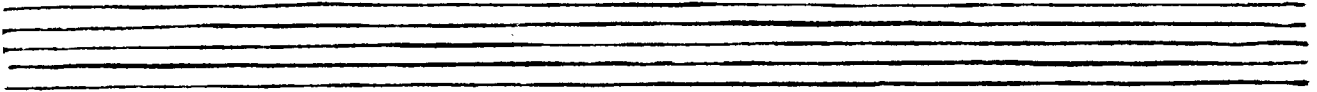
SUPERIUS ET TENOR.



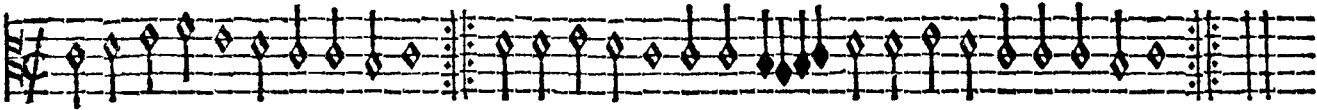
bransle I.



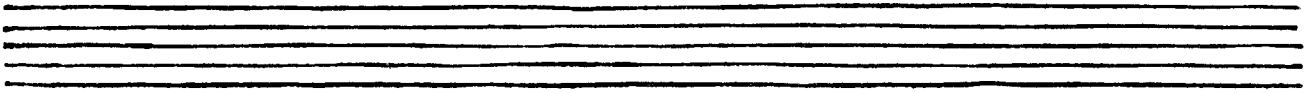
bransle II.

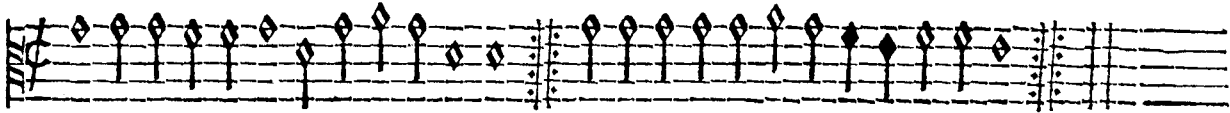


Tenor. bransle I.

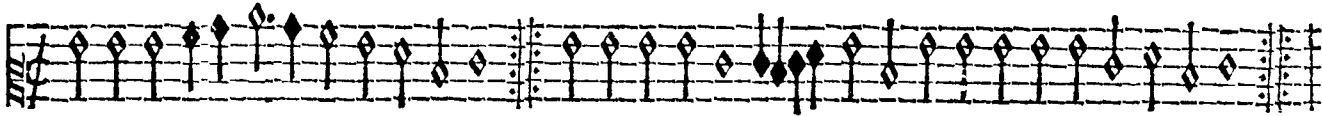


bransle II.

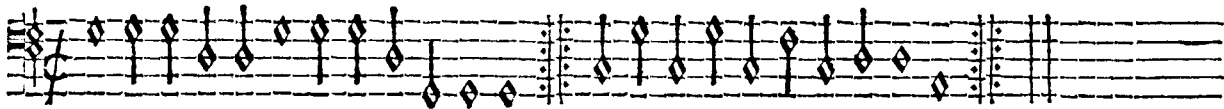




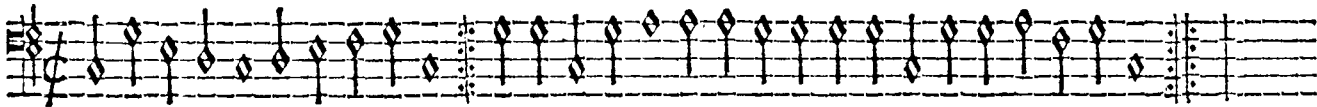
bransle I.



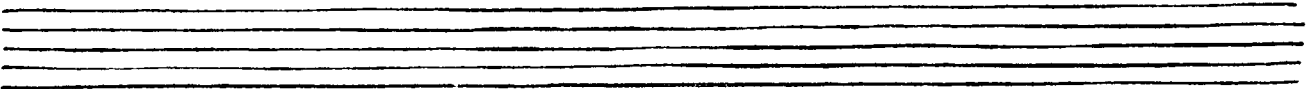
Bransle II.



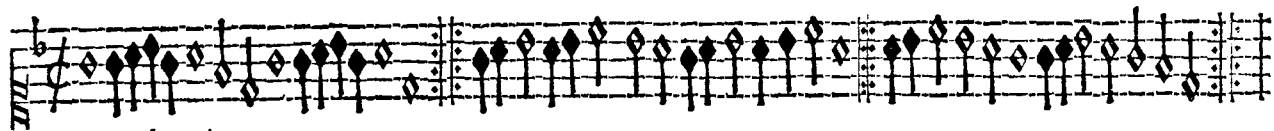
Bassus. bransle I.



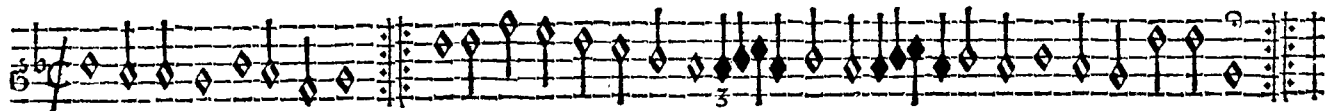
bransle II.



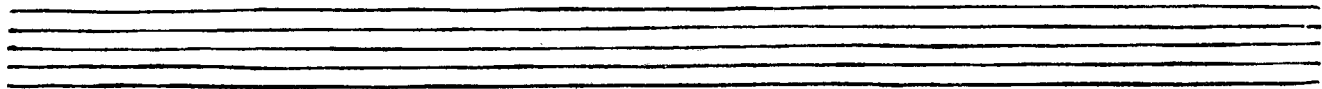
SUPERIUS ET TENOR.



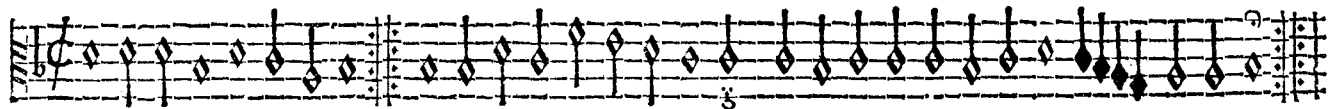
bransle III.



bransle IIIII.



Tenor bransle III.



bransle IIIII.



CONTRATENOR ET BASSVS.

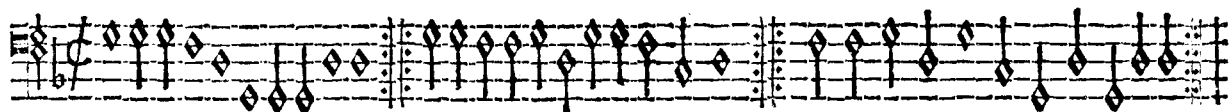
XXXI.



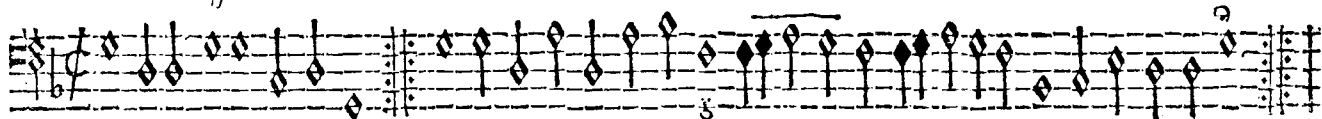
bransle III.



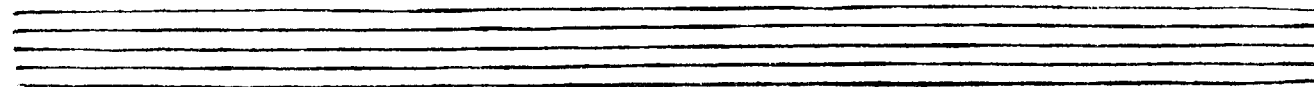
bransle IIIII.



Bassus. Bransle III.



bransle IIIII.



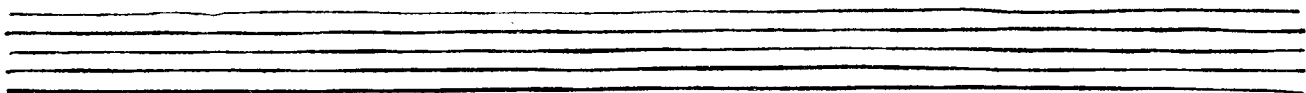
SVPERIVS ET TENOR.



bransle V.



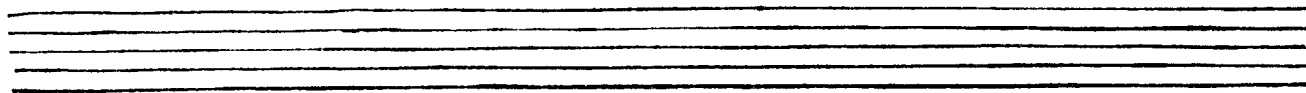
bransle VI.



Tenor bransle V.



bransle VI.

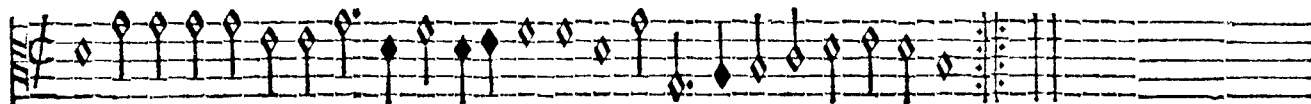


CONTRATENOR ET BASSVS.

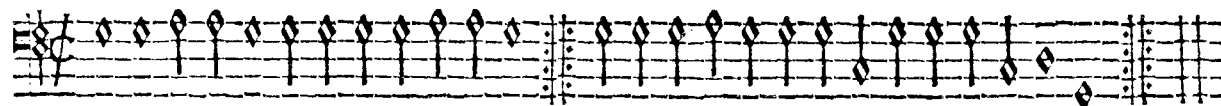
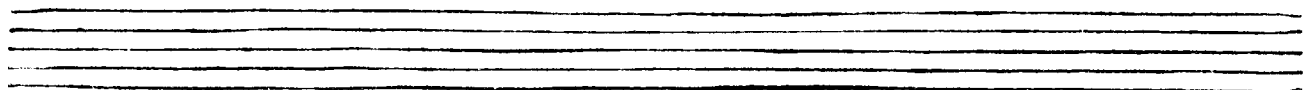
XXXII.



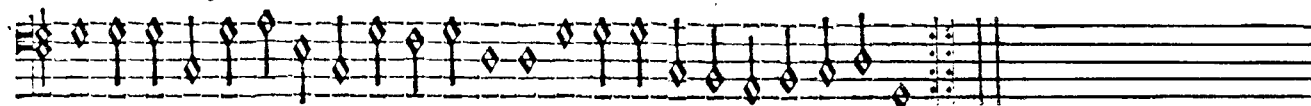
bransle V.



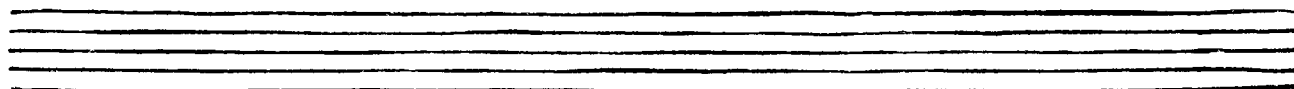
bransle VI.



Bass. bransle V.



bransle VI.



FINIS.

[Redacted text block]

[Redacted text block]

[Redacted text block]

[Redacted text block]

[Redacted text block]

[Redacted text block]