

# SIXIEME LIVRE DE DANCERIES,

MIS EN MUSIQUE A QUATRE PARTIES PAR

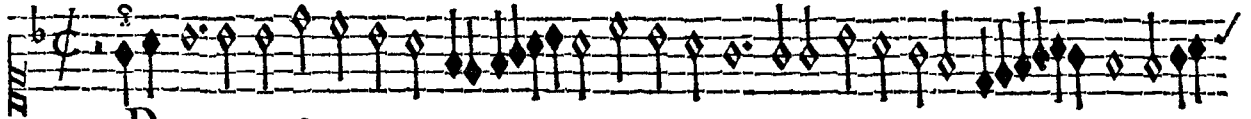
*Claude Geruaise, nouvellemēt imprimé à Paris par la vesue de Pierre Attaingnāt,  
demourant en la Rue de la Harpe, pres leglise saint Cosme.*

<b>P</b> Auanne passemaize, & sa Gaillarde.	Fo. j.
Pauanne des dieux, & sa gaillarde.	fol ij.
Pauanne d'Angleterre, avec sa gaillarde.	fo. iij.
Six gaillardes ensuyuant, dont le premier feuillet est S'ensuit apres vne fin de gaillarde.	fo. iiij.
Deux branles simples, dont le premier feuillet est	fo. vj.
Douze branles de Champaigne, dont le premier feuillet est S'ensuyuent apres deux branles courans.	vij.
Puis, deux branles gays.	fo. ix.
Puis, quatre branles simples.	xvj.
Puis encores deux branles gays.	xviij.
S'ensuyuent encores apres douze branles de Champaigne.	fo. xix.
Plus il ya quatre branles gays.	xxij.
	fo. xxiiij.
	fo. xxx.

I 5 5 5.

Avec priuilege du Roy, pour neuf ans.

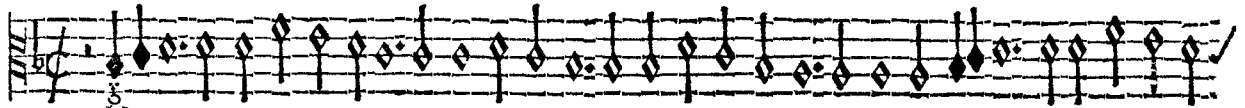
SUPERIUS ET TENOR.



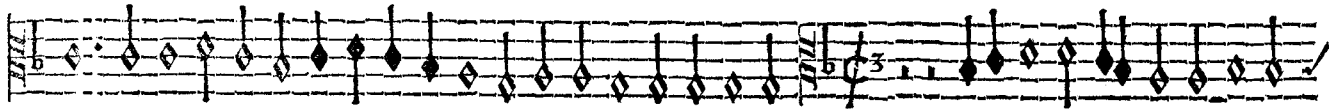
*P* Auanne passemaize.



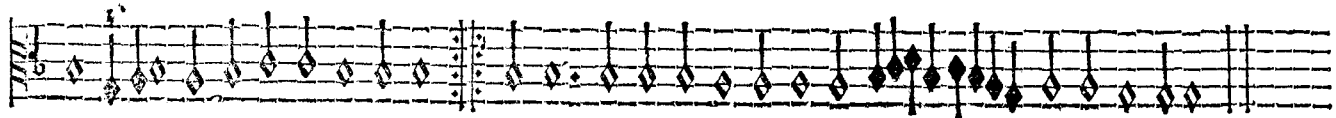
*Gaillarde.*



*P* Auanne passemaize.

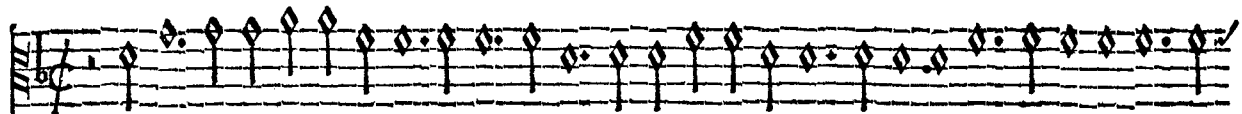


*Gaillarde.*



CONTRATENOR ET BASSVS.

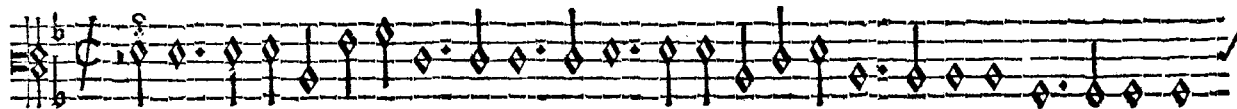
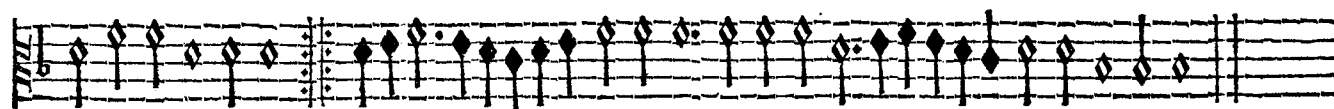
II.



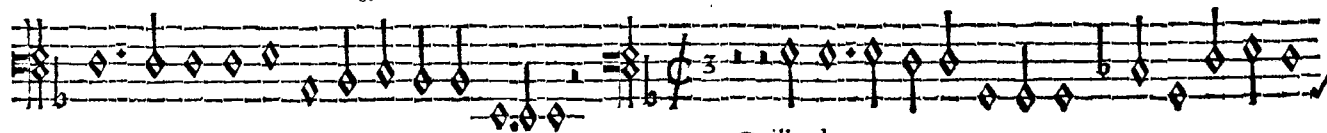
*P* Auanne passemaize.



*Gaillarde.*



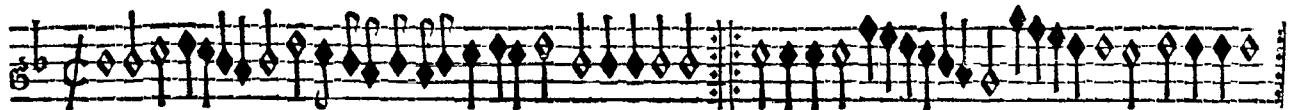
*P* Auanne passemaize.



*Gaillarde.*



SUPERIUS ET TENOR.



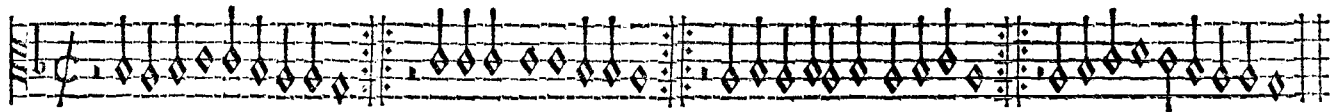
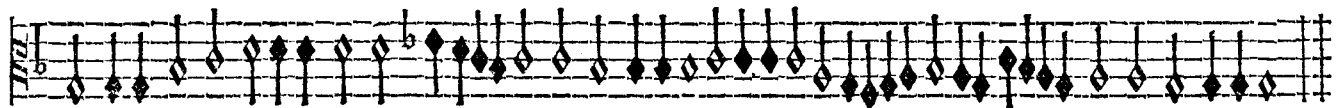
*P* *Auanne des dieux.*



*Gaillarde.*



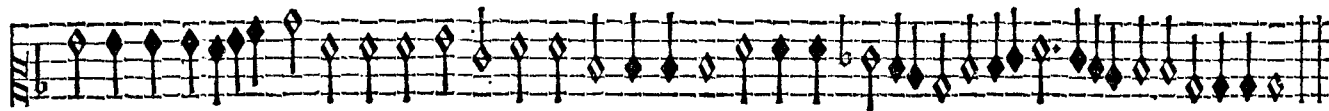
*P* *Auanne des dieux.*



*Gaillarde.*



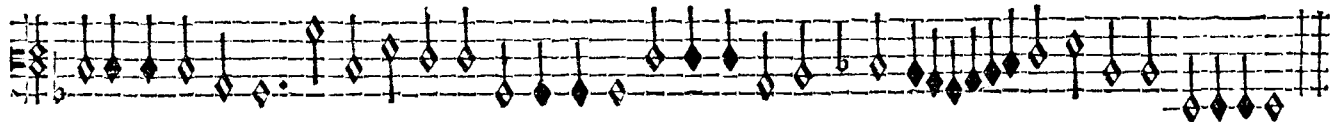
*P* *Auanne des dieux.*



*Gaillarde.*

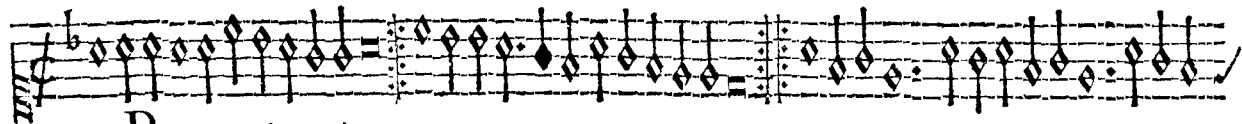


*P* *Auanne des dieux.*

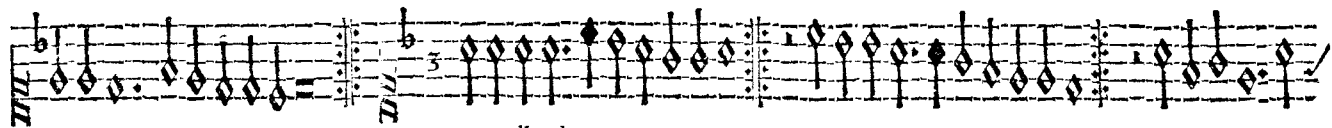


*Gaillarde.*

SUPERIUS ET TENOR.



*P*auanne d'Angleterre.



Gaillarde.



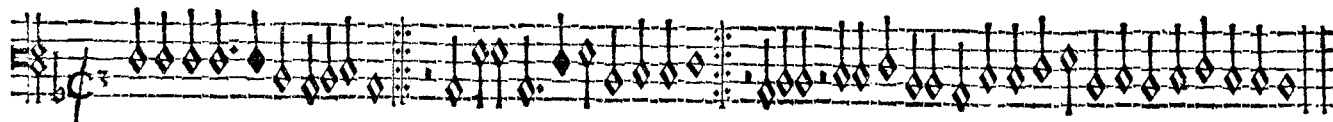
Tenor. *P*auanne d'Angleterre.



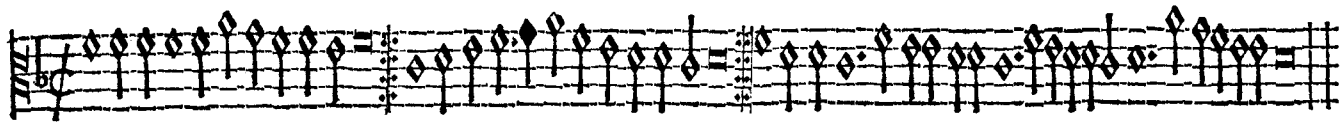
Gaillarde.



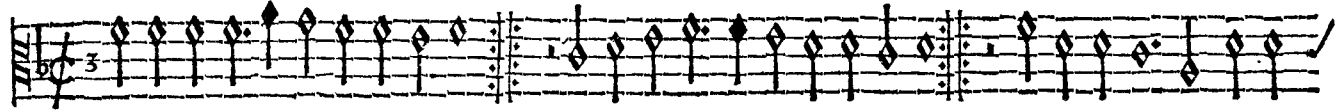
Basse taille. *P*auanne d'Angleterre.



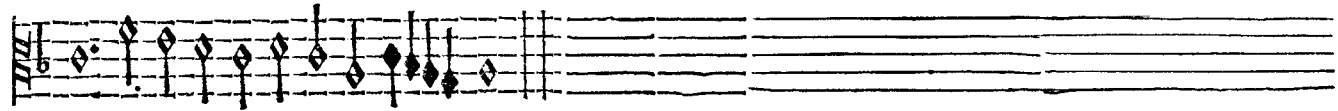
Gaillarde.



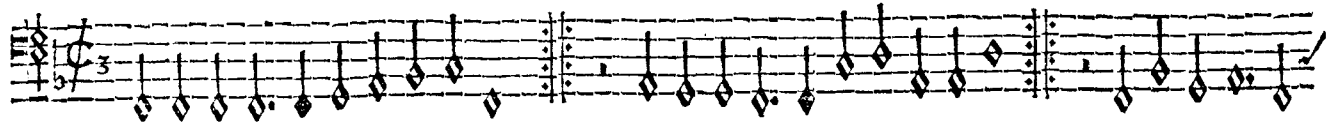
*Contratenor. Pauanne d'Angleterre.*



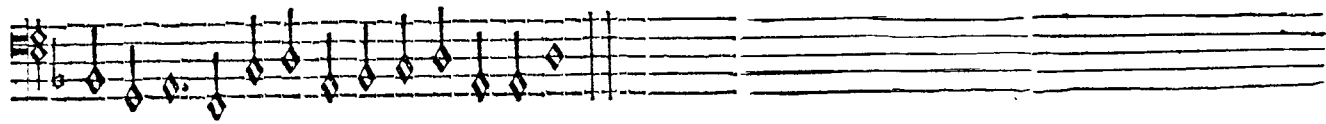
*Gaillarde.*



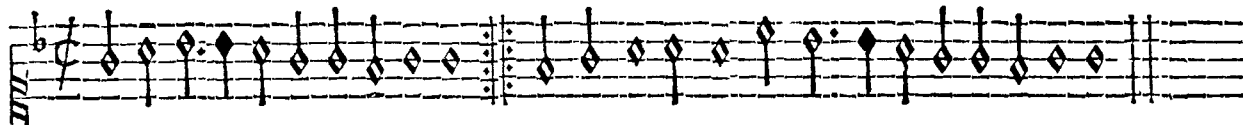
*Bassus. Pauanne d'Angleterre.*



*Gaillarde.*



SUPERIUS ET TENOR.



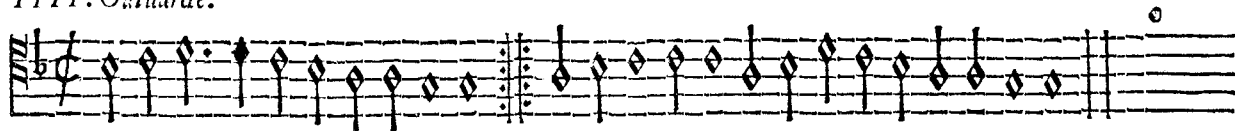
*II. Gaillarde.*



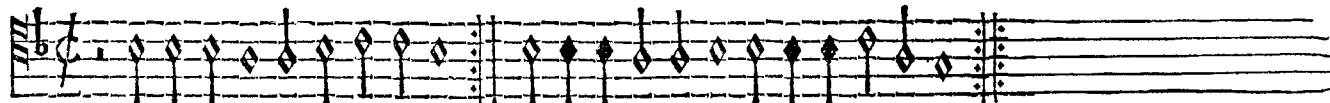
*III. Gaillarde.*



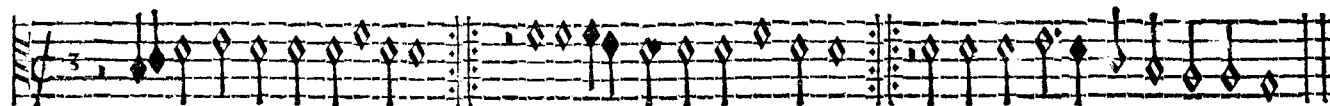
*IIII. Gaillarde.*



*II. Gaillarde.*

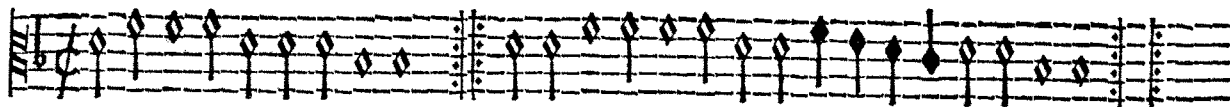


*III. Gaillarde.*

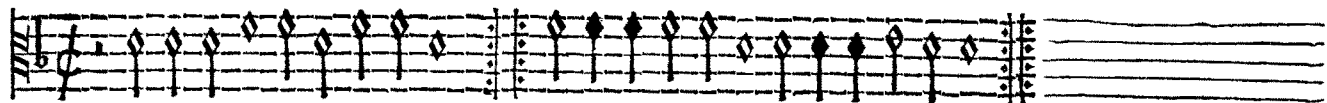


*IIII. Gaillarde.*

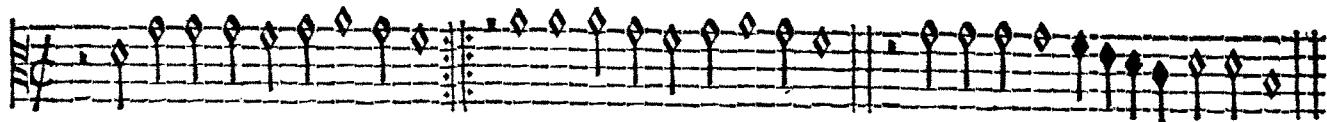




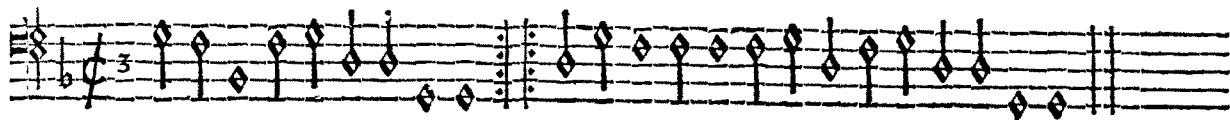
*II. Gaillarde.*



*III. Gaillarde.*



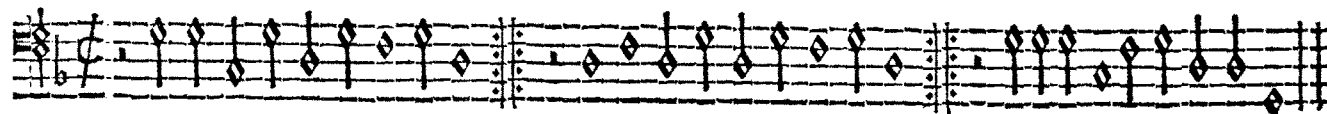
*IIII. Gaillarde.*



*II. Gaillarde.*

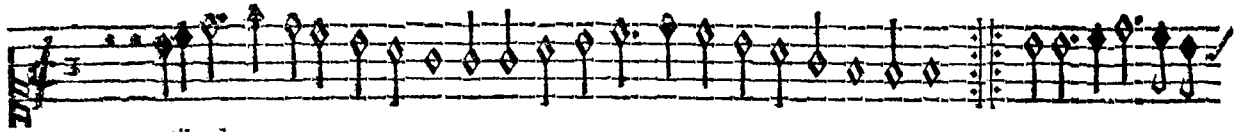


*III. Gaillarde.*

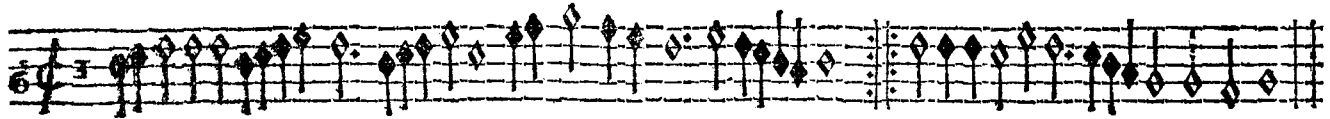
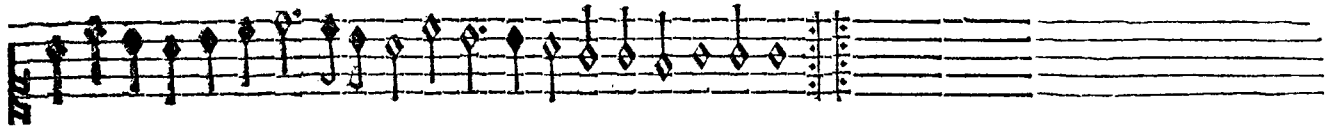


*IIII. Gaillarde.*

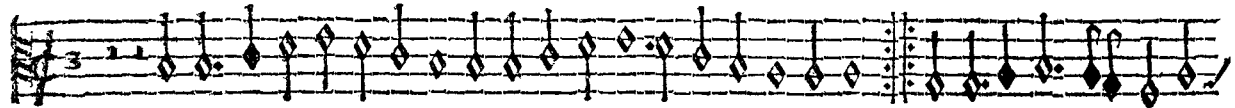
SVPERIVS ET TENOR.



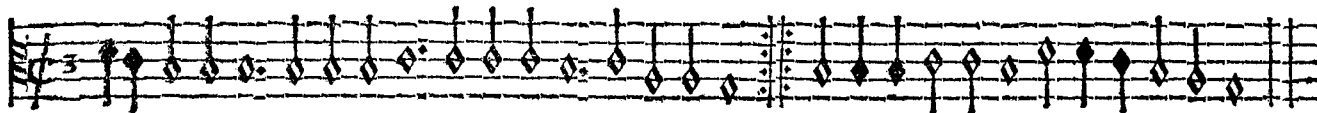
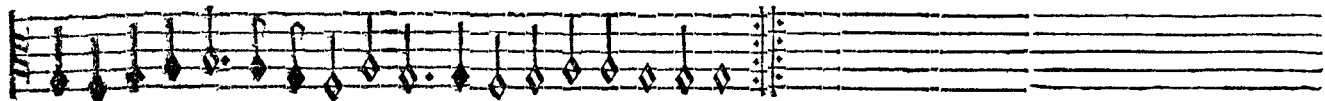
*V. Gaillarde.*



*V I. Gaillarde.*



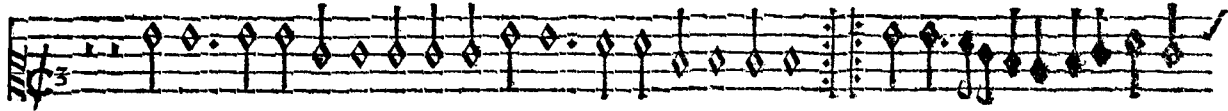
*V. Gaillarde.*



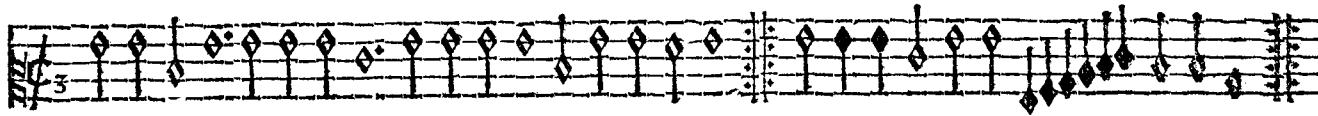
*V I. Gaillarde.*

CONTRATENOR ET BASSVS.

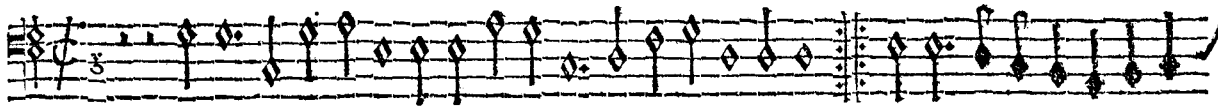
VI.



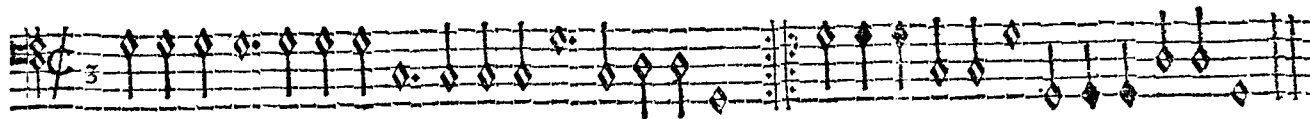
V. Gaillarde.



VI. Gaillarde.



VI. Gaillarde.



VI. Gaillarde.

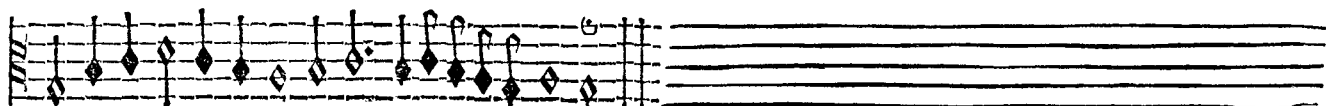
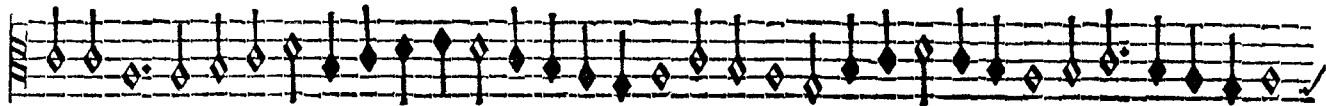
SUPERIUS ET TENOR.



*Fin de Gaillarde.*



*Fin de Gaillarde.*

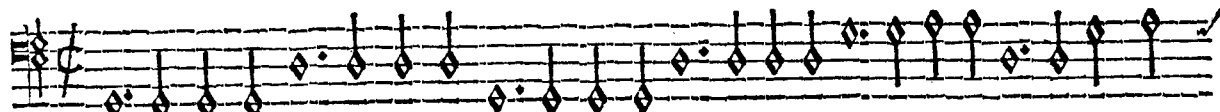
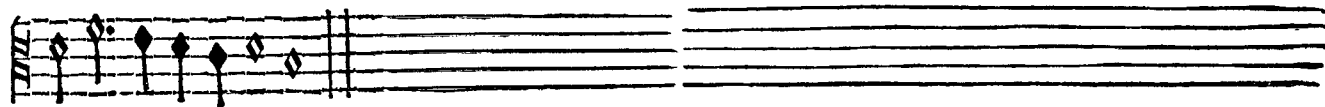


CONTRATENOR ET BASSVS.

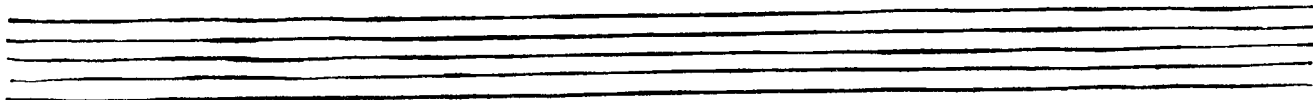
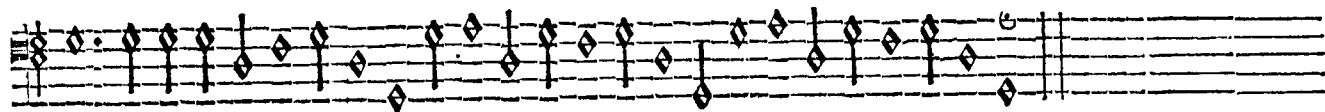
VII.



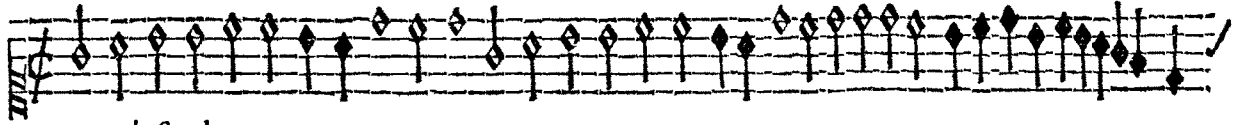
*Fin de Gaillarde.*



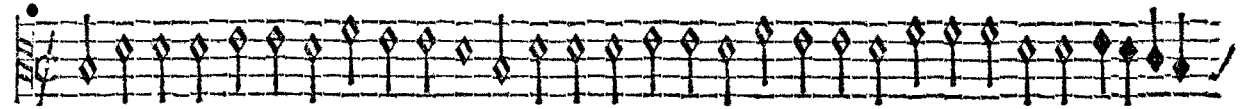
*Fin de Gaillarde.*



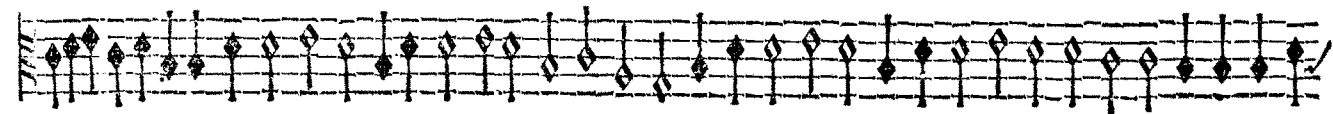
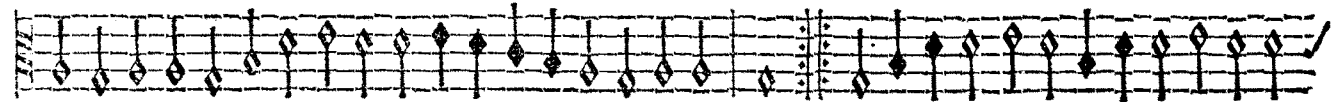
SUPERIUS ET TENOR.



*Bransle simple I.*

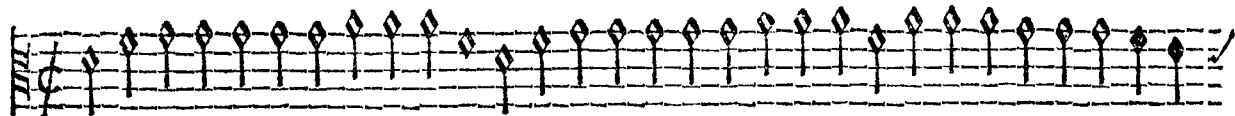


*Beausle simple I.*

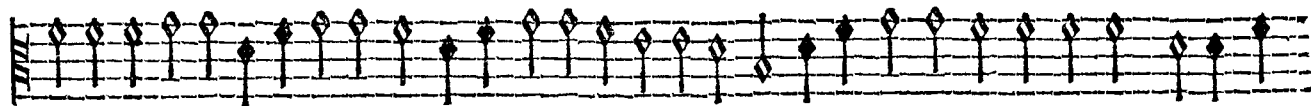


CONTRATENOR ET BASSVS.

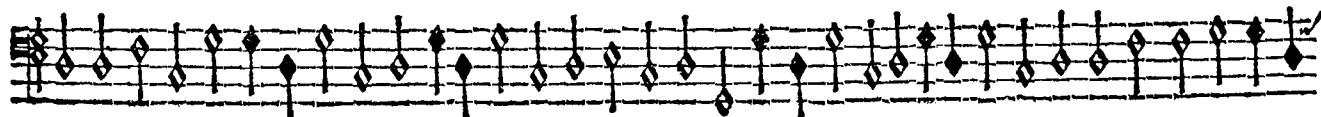
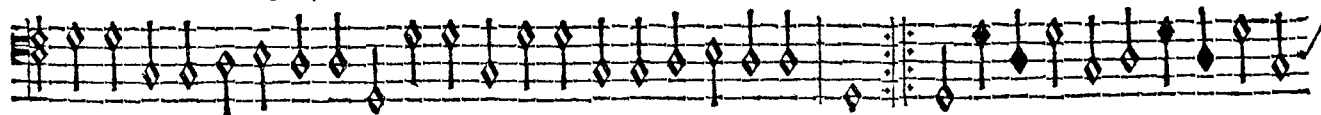
VIII.



*Bransle simple I.*



*Bransle simple I.*



SUPERIUS ET TENOR.



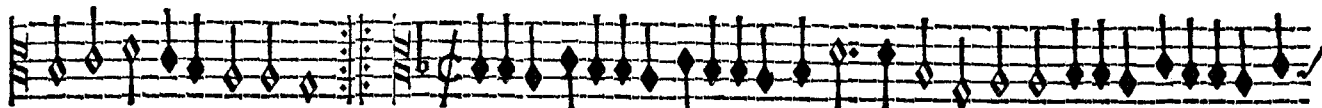
*Refte bransle simple I.*



*Bransle II.*



*Refte bransle simple I.*



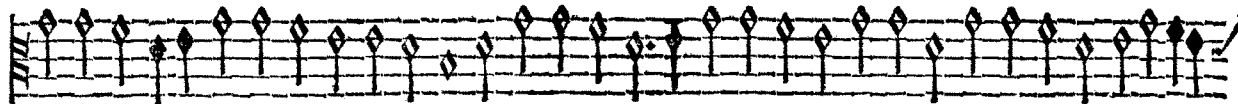
*Bransle simple II.*





CONTRATENOR. ET BASSVS.

IX.



*Reste bransle simple I.*



*Bransle simple II.*



*Reste bransle simple I*



*Bransle simple II.*



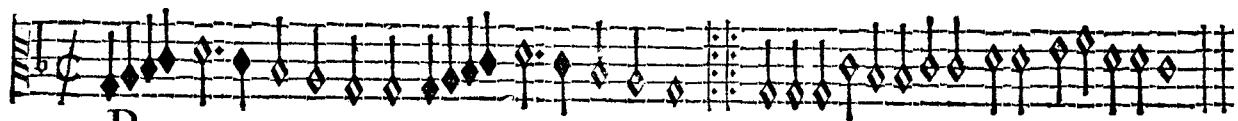
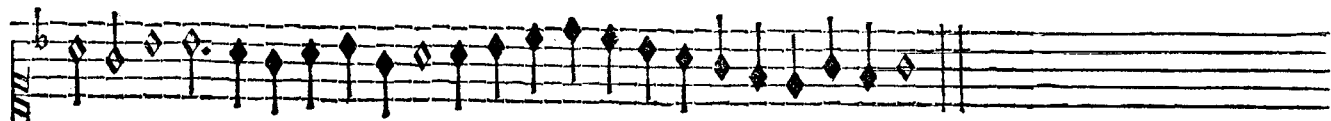
SUPERIUS ET TENOR.



Bransle de Champagne I.



Bransle de Champagne II.



Bransle de Champagne I



bransle de Champagne II.

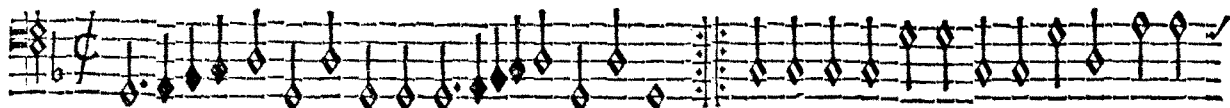




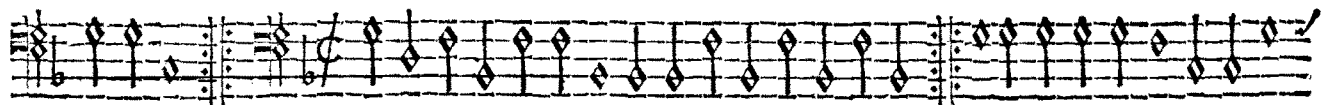
*Bransle de Champagne I.*



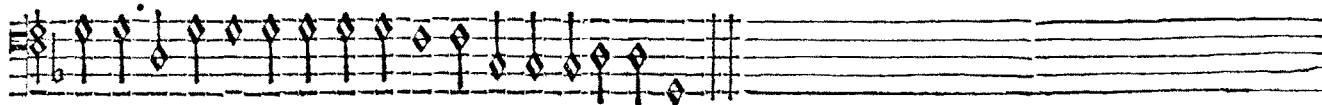
*Bransle de Champagne II.*



*Bransle de Champagne V.*



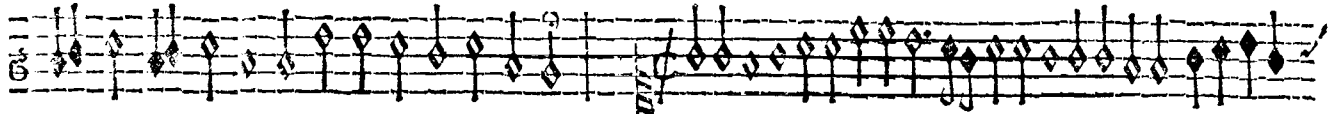
*Bransle de Champagne VI.*



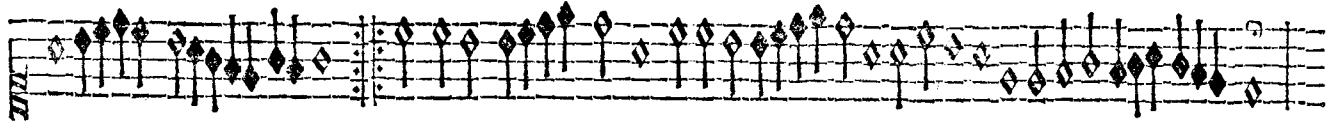
SUPERIUS. ET TENOR.



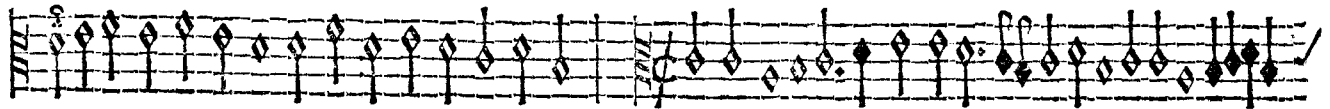
Branle de Champagne. III.



Branle de Champagne IIII.



Branle de Champagne III.

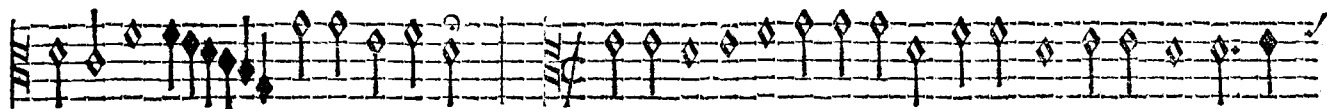


Branle de Champagne IIII.

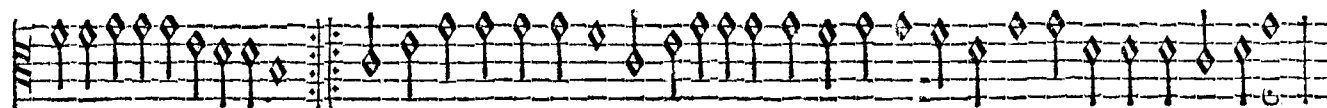




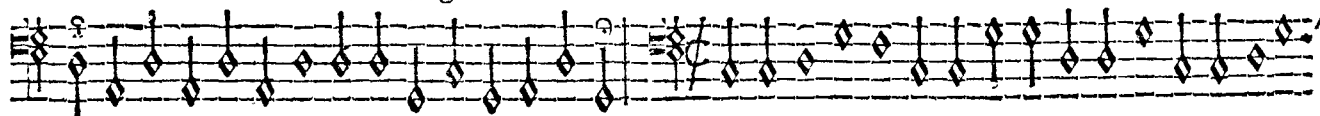
Bransle de Champagne III.



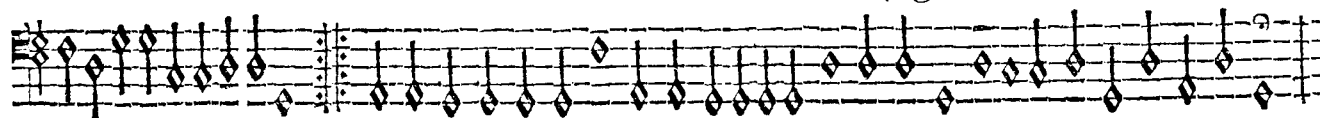
Bransle de Champagne IIIII.



Bransle de Champagne III.



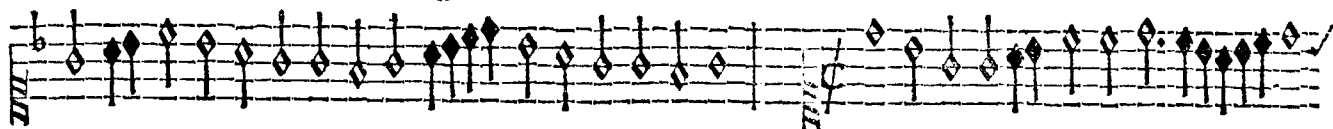
Bransle de Champagne IIIII.



SUPERIUS ET TENOR.



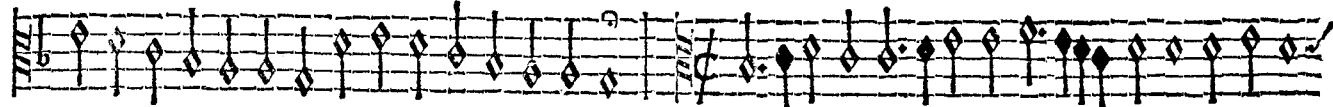
Bransle de Champagne V.



Bransle de Champagne VI.



Bransle de Champagne V.



Bransle de Champagne VI.





Bransle de Champagne V.



Bransle de Champagne VI.



Bransle de Champagne V.



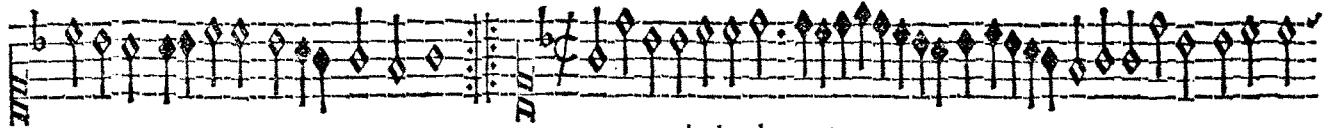
Bransle de Champagne VI.



SUPERIUS ET TENOR.



Bransle de Champagne VII.



Bransle de Champagne VIII.



Bransle de Champagne VII.



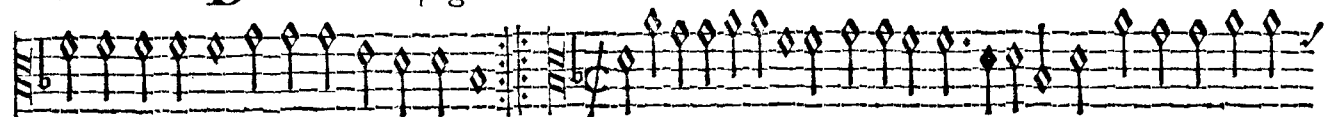
Bransle de Champagne VIII.



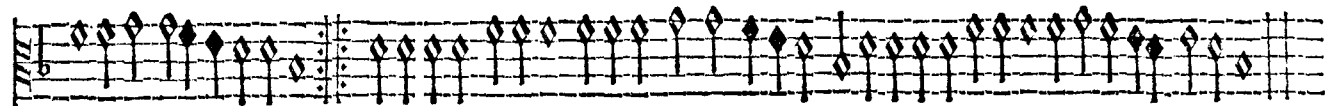




Bransle de Champagne VII.



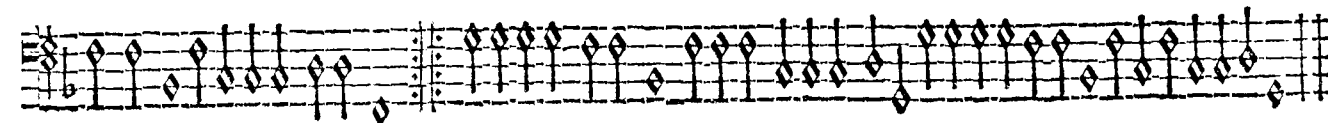
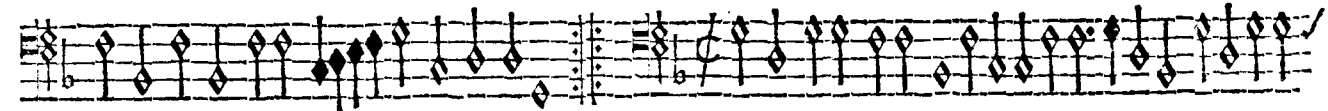
Bransle de Champagne VIII.



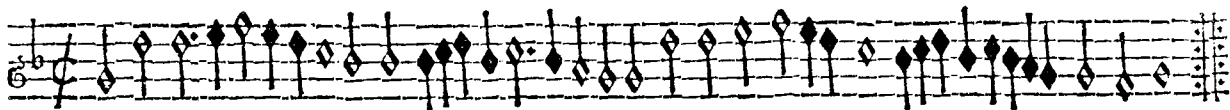
Bransle de Champagne VII.



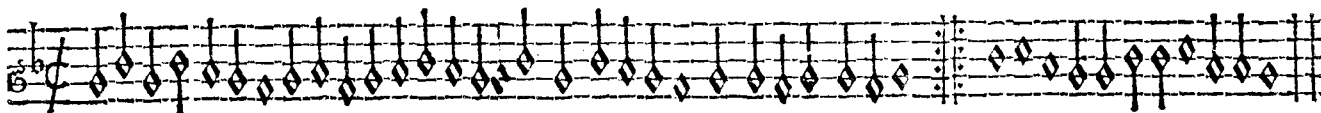
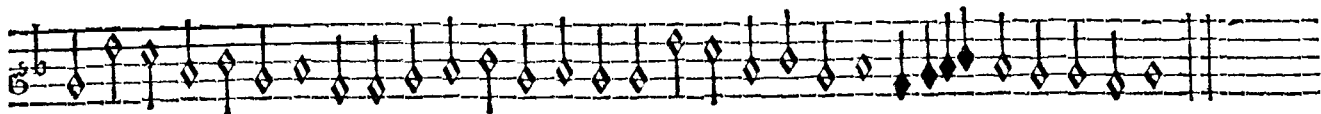
Bransle de Champagne VIII.



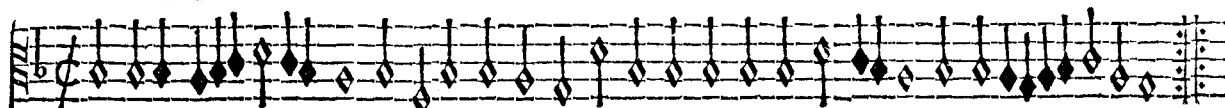
SUPERIUS ET TENOR.



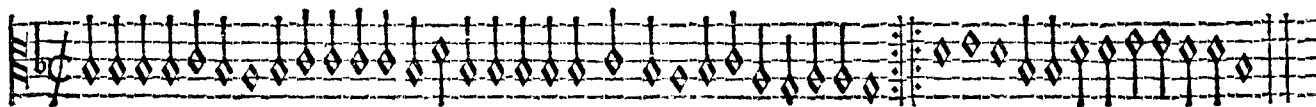
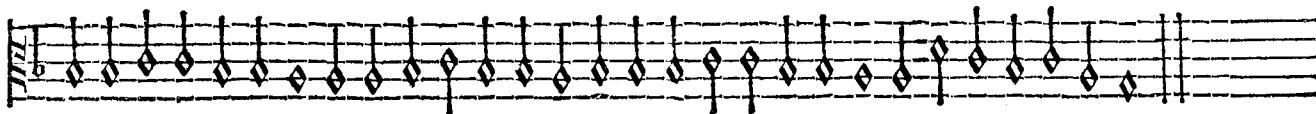
Bransle de Champagne IX.



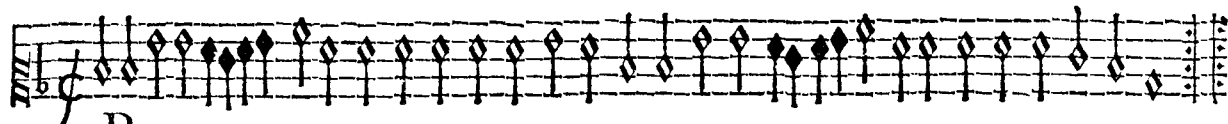
Bransle de Champagne X.



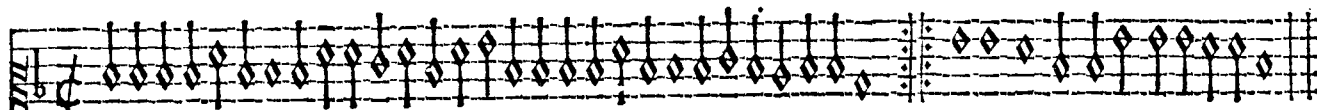
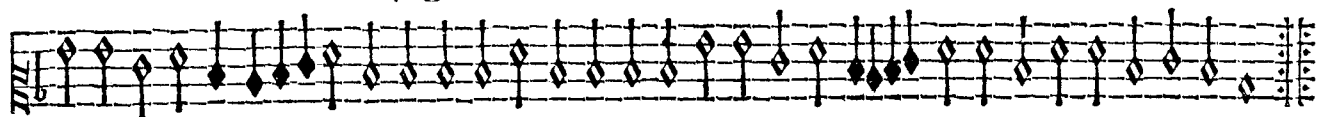
Bransle de Champagne IX.



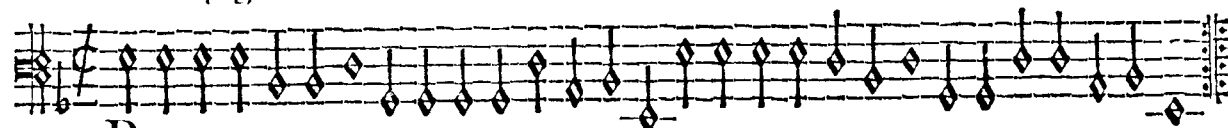
Bransle de Champagne X.



Bransle de Champagne IX.



Bransle de Champagne X.

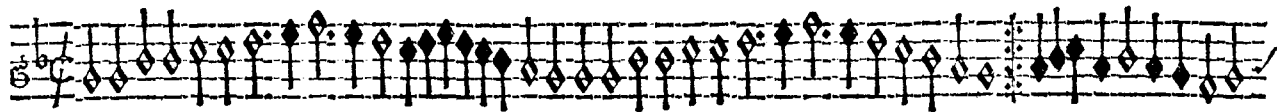


Bransle de Champagne IX.



Bransle de Champagne X.

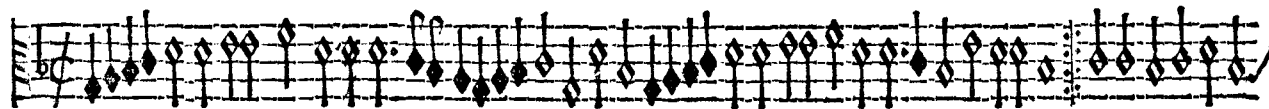
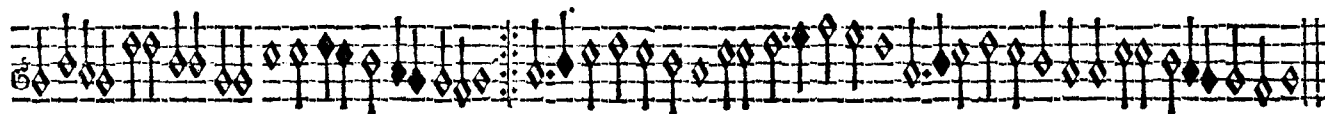
SVPERIVS. ET TENOR.



Bransle de Champagne XI.



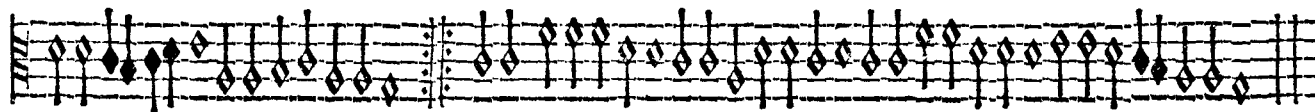
Bransle de Champagne XII.

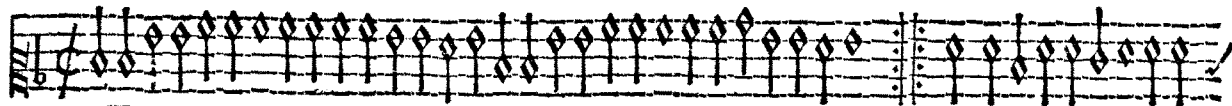


Bransle de Champagne XI.

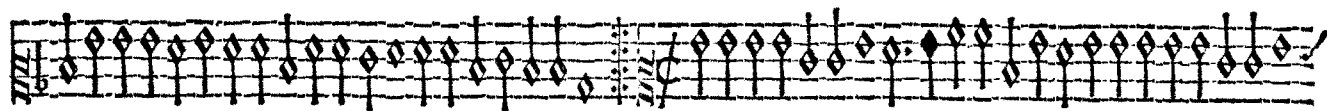


Bransle de Champagne XII.

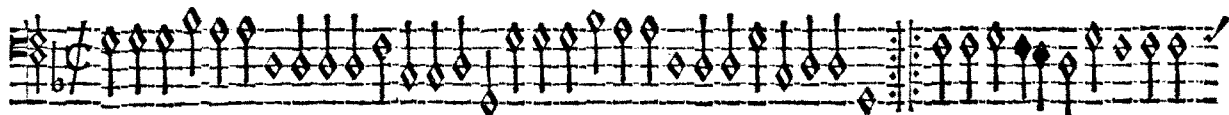
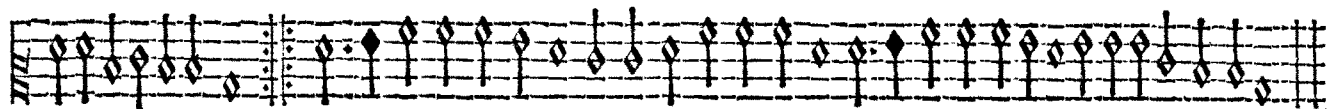




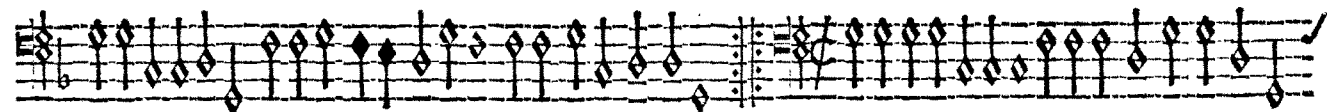
Bransle de Champagne XI.



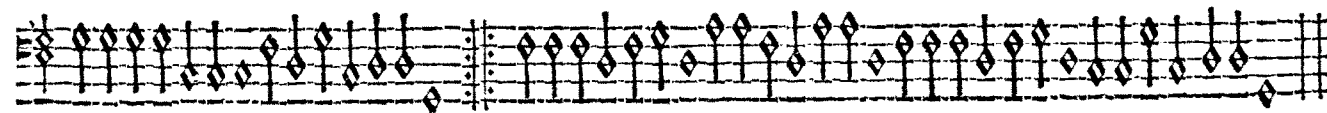
Bransle de Champagne XII.



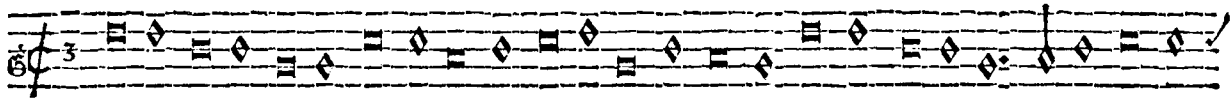
Bransle de Champagne XI.



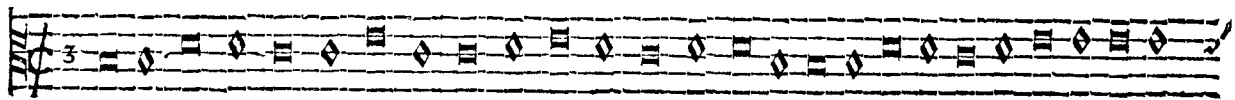
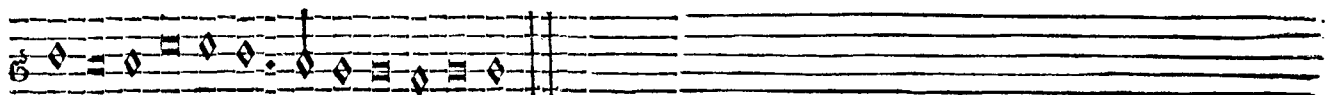
Bransle de Champagne XII.



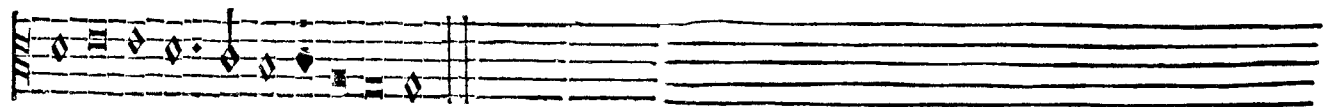
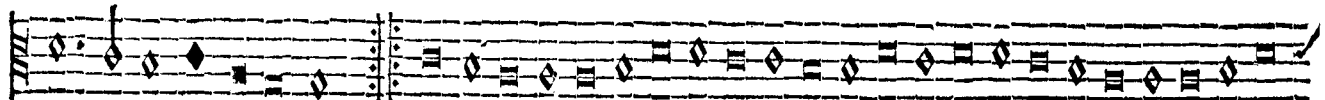
SVPERIVS ET TENOR.

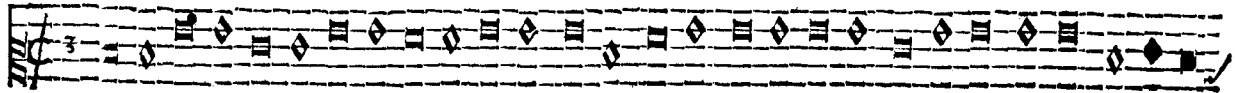


Branle courant 1.

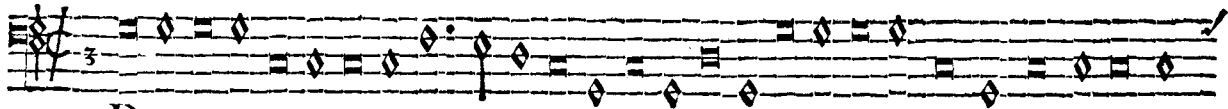
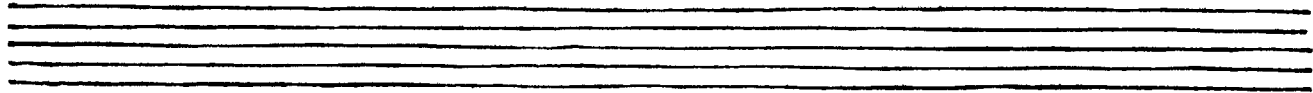
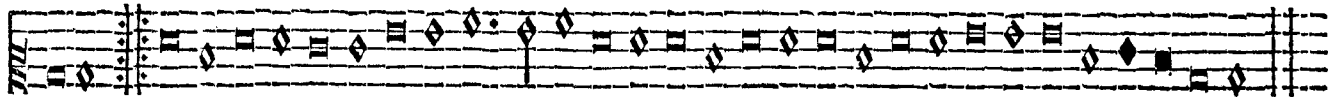


Branle courant 1.

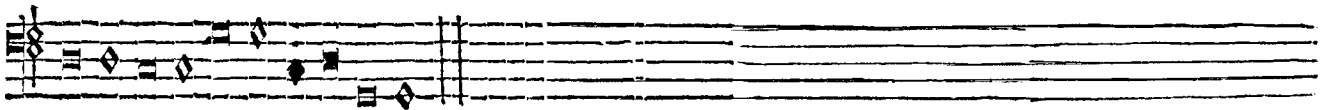
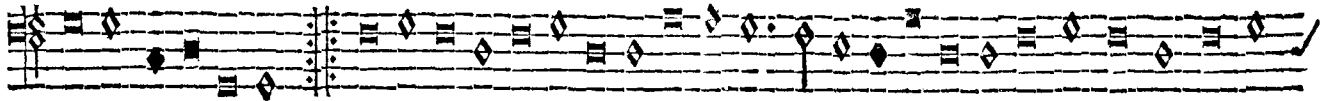




*B*Ransle courant 1.



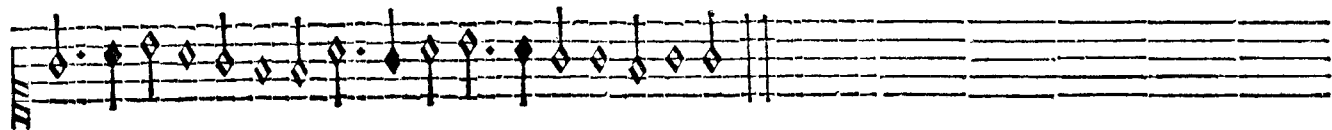
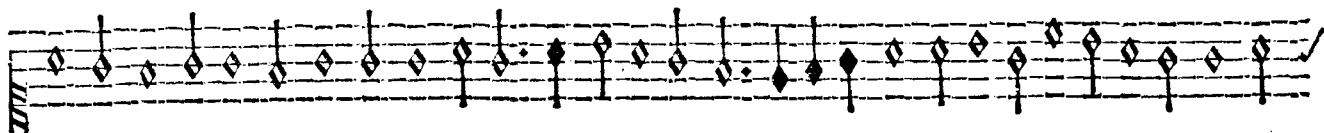
*B*Ransle courant 1.



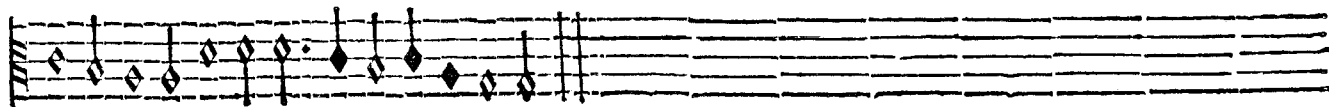
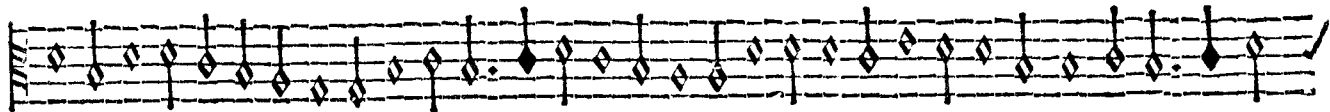
SVPERIVS ET TENOR.



B *Ransle courant* II.



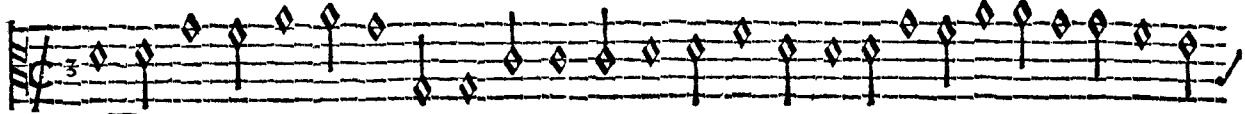
B *Ransle courant* II.



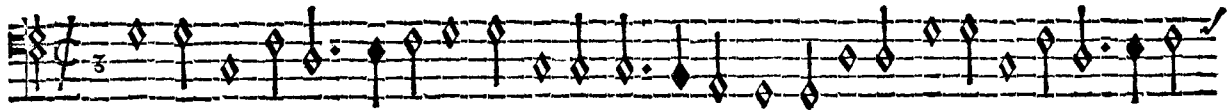
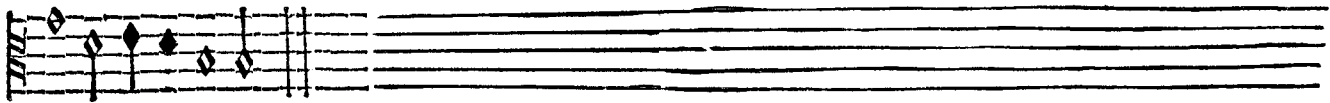


CONTRATENOR. ET BASSVS.

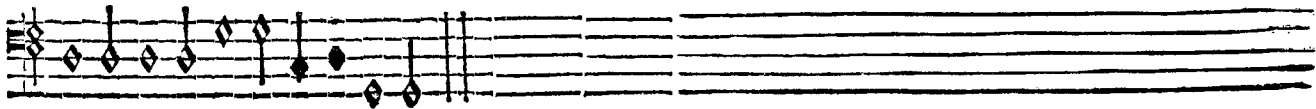
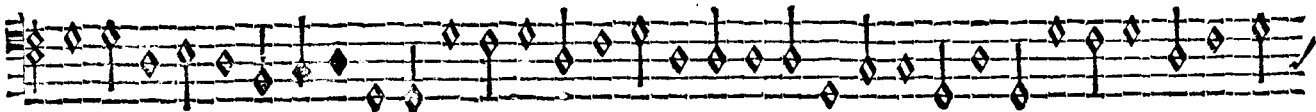
XVII.



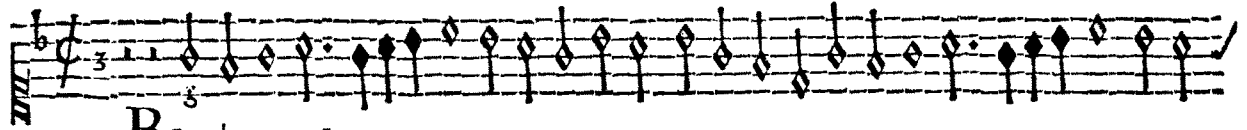
**B**ransle courant II.



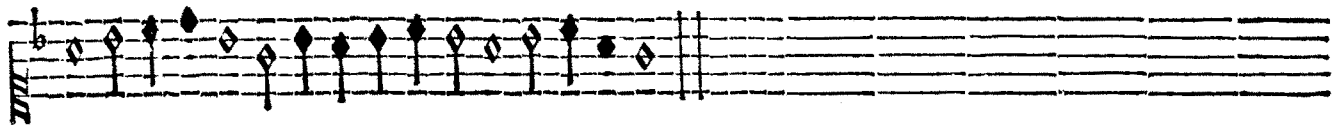
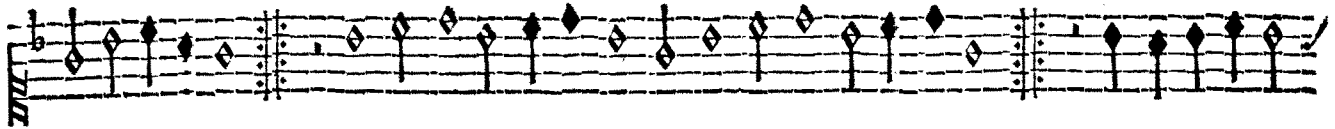
**B**ransle courant II.



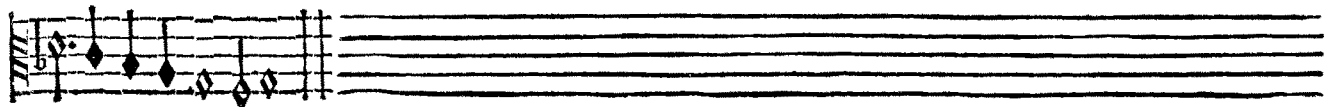
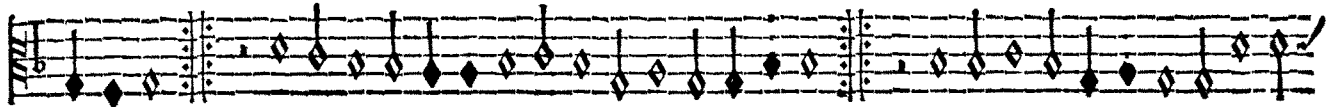
SUPERIUS ET TENOR.

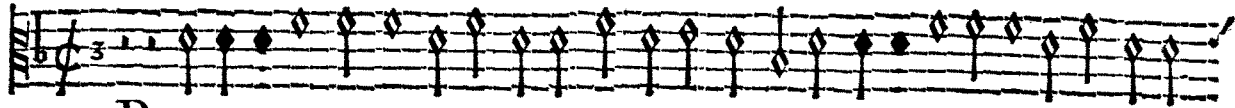


**B***Ransle gay 1.*

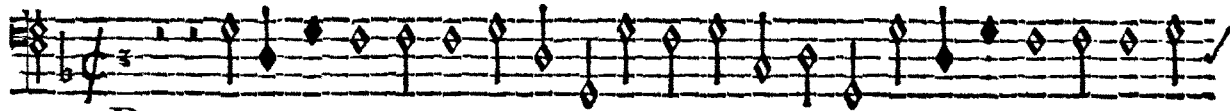
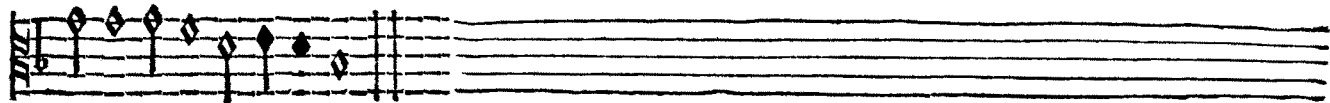
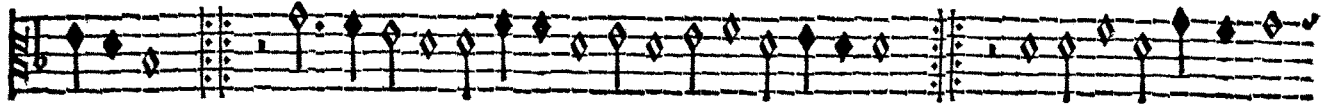


**B***Ransle gay 1.*

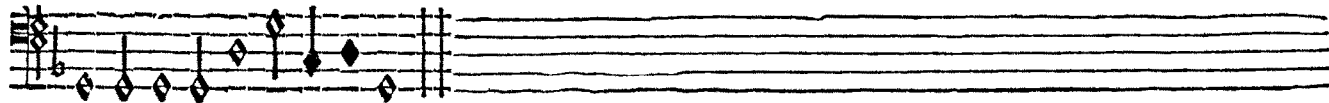
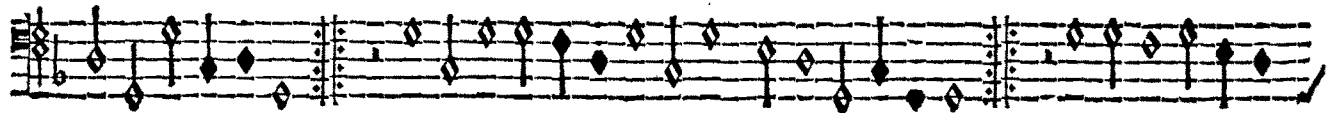




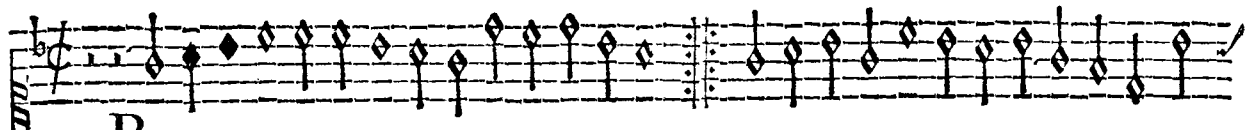
*B*Ransle gay I.



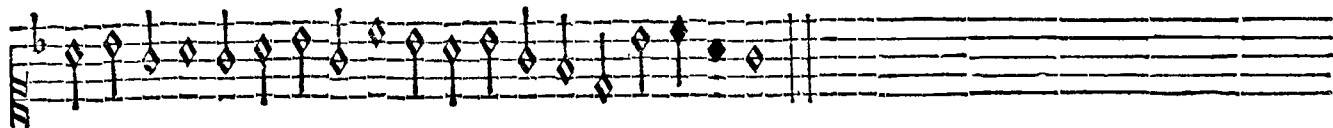
*B*Ransle gay I.



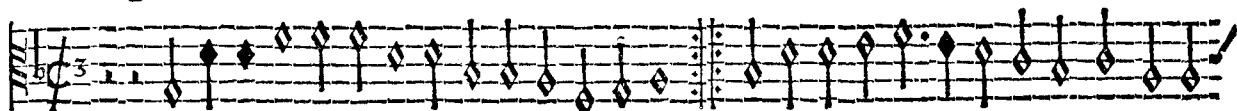
SVPERIVS. ET TENOR.



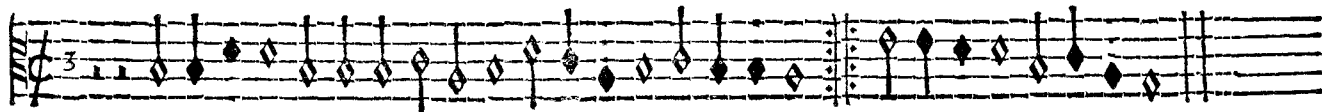
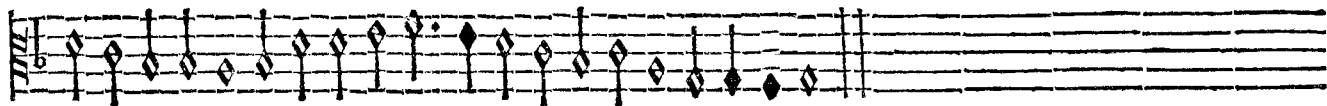
**B**ransle gay II.



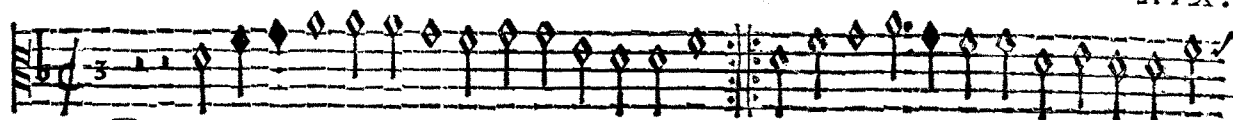
Bransle gay III.



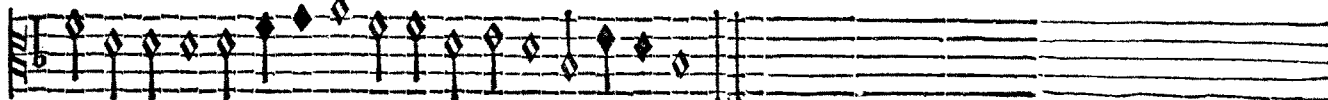
**B**ransle gay II.



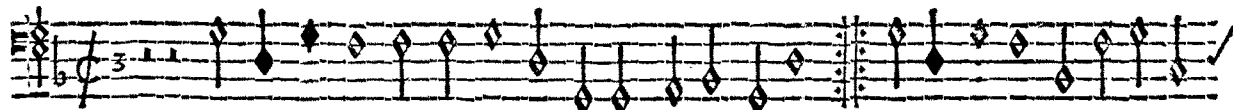
Bransle gay III.



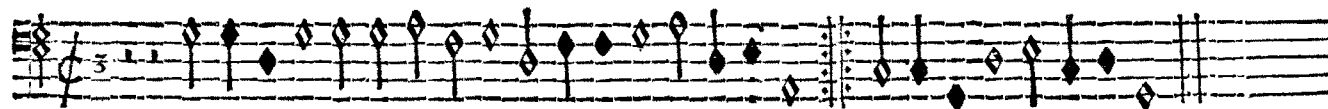
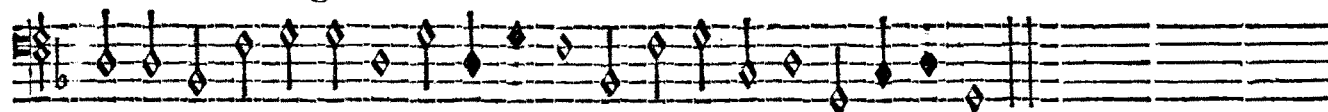
Bransle gay II.



Bransle gay III.

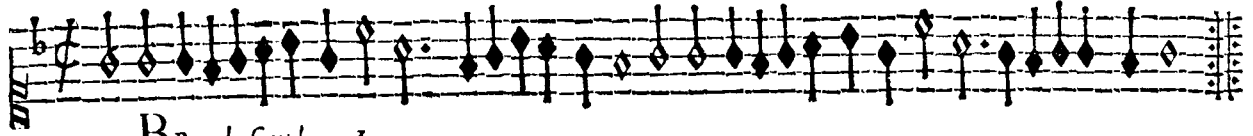


Bransle gay II.

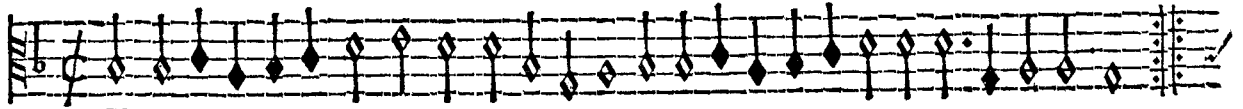
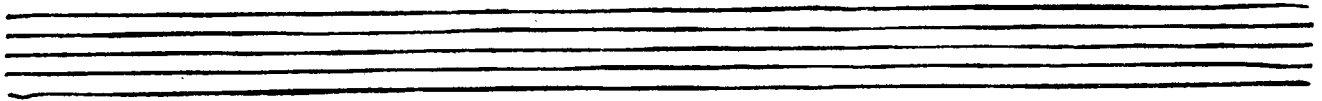
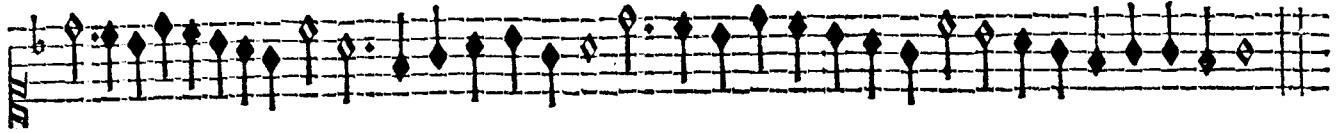


Bransle gay III.

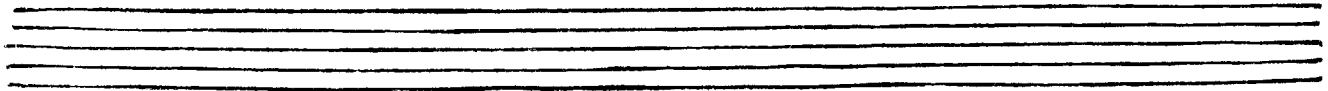
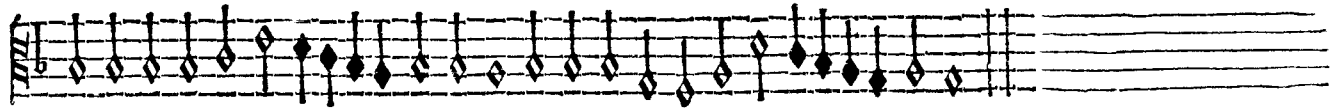
SUPERIUS ET TENOR.

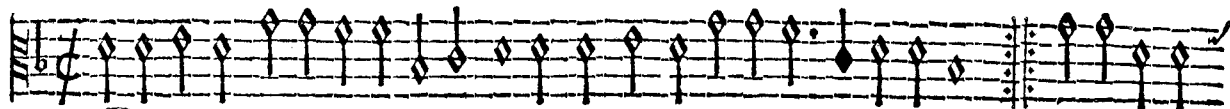


Branle simple 1.

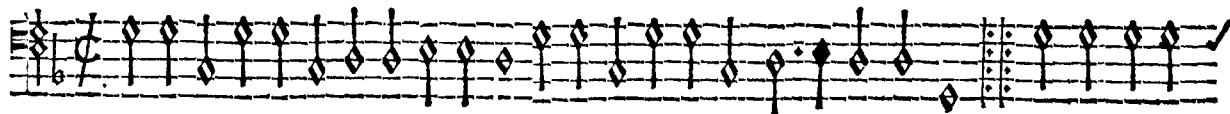
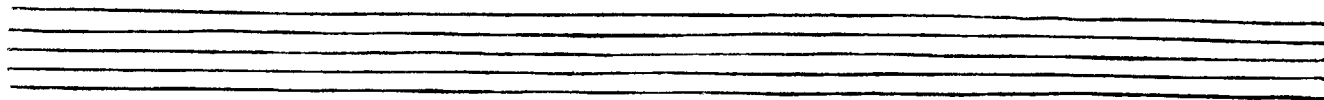


Branle simple 1.

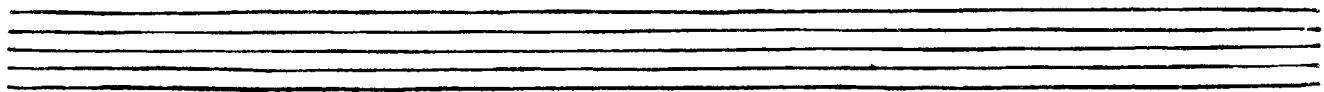
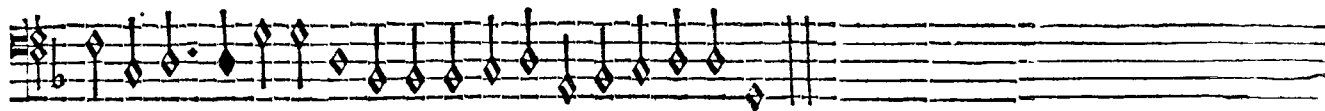




*Branle simple* I.



*Branle simple* I.



SUPERIUS ET TENOR.



*Branle simple II.*



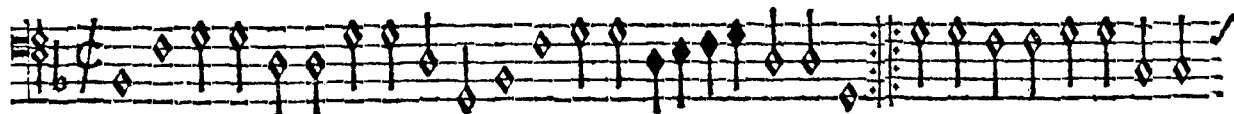
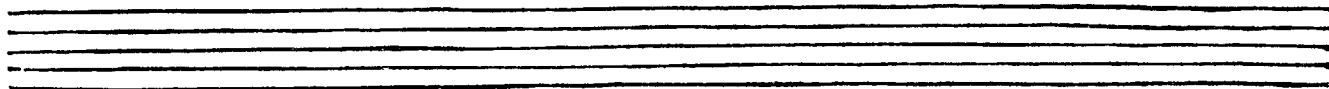
*Branle simple II.*



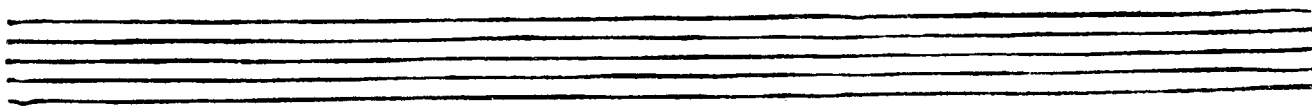
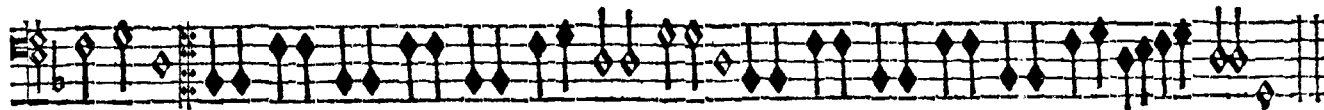




*B*Ransle simple II.



*B*Ransle simple II.



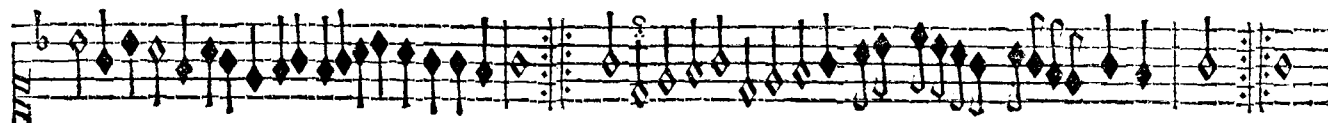
SUPERIUS ET TENOR.



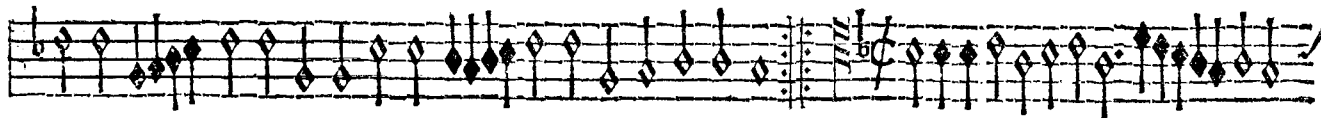
*B*Ransle simple III.



*B*ransle simple IIII,

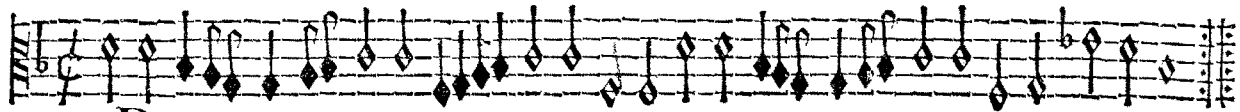


*B*Ransle simple III.

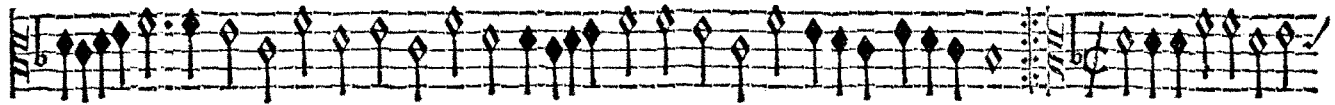


*B*ransle simple IIII.

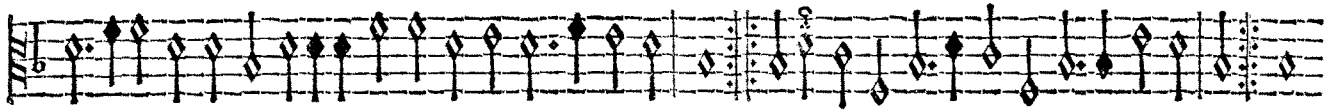




*Bransle simple III.*



*Bransle simple IIII.*



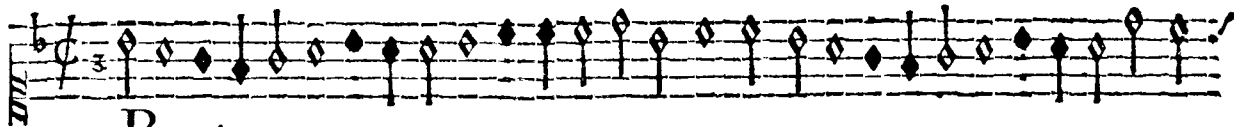
*Bransle simple III,*



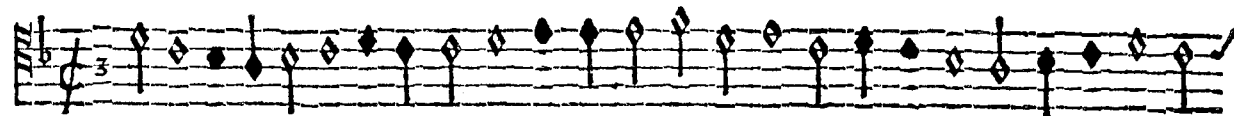
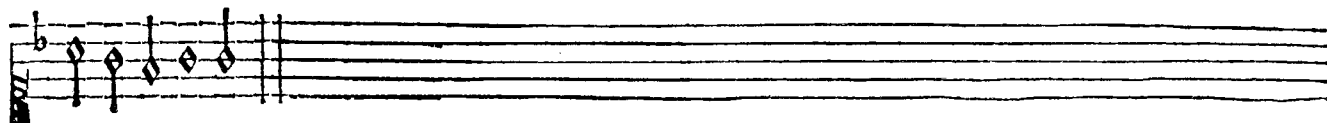
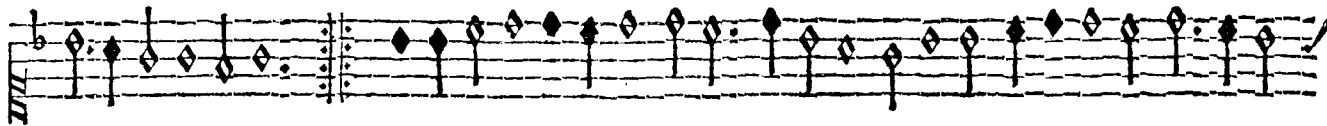
*Bransle simple IIII,*



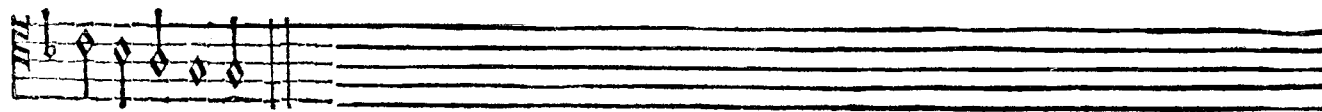
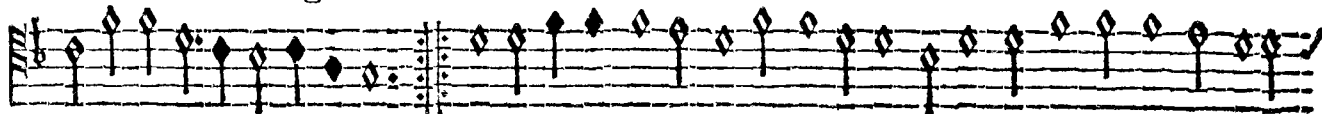
SVPERIVS. ET TENOR.



B*R*aisle gay I.

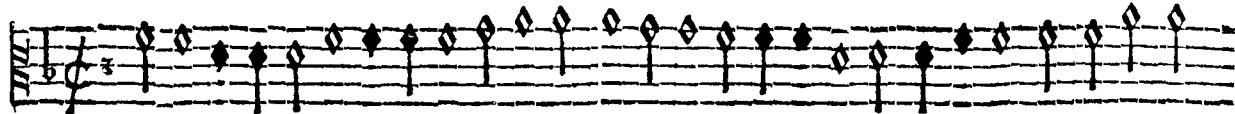


B*R*aisle gay I.

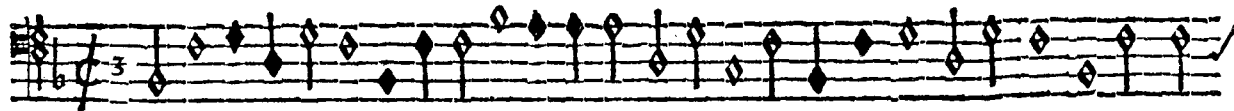
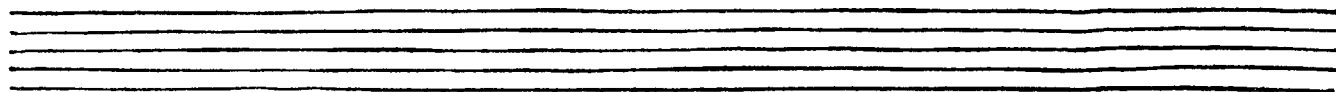
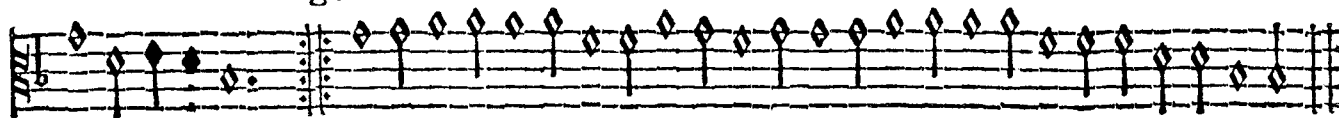


CONTRATENOR ET BASSVS.

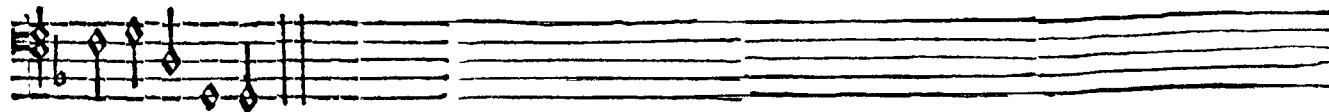
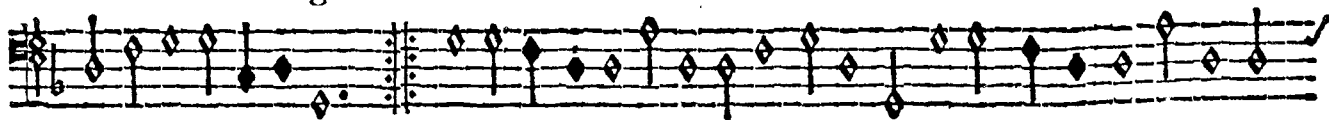
XXI II.



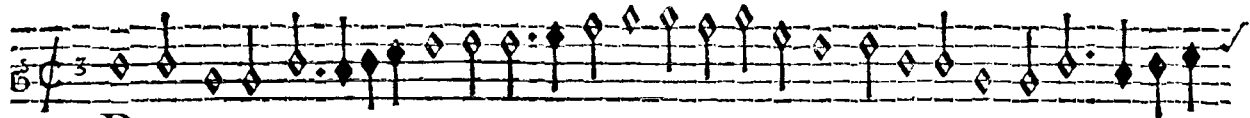
*B*Ransle gay I.



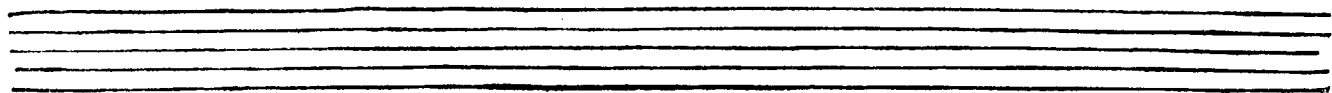
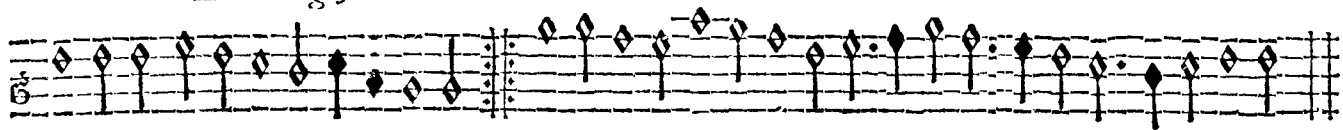
*B*Ransle gay I.



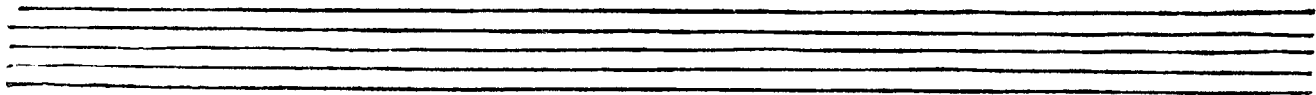
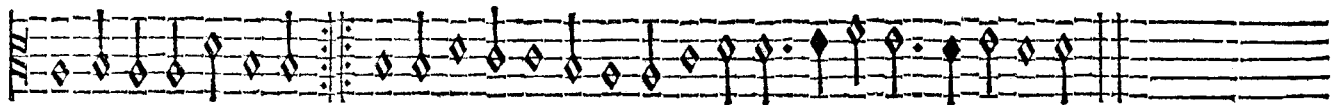
SVPERIVS ET TENOR.

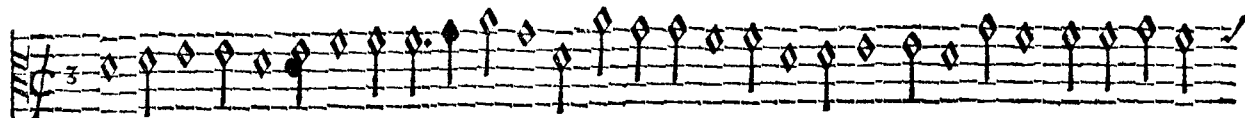


*B*Ransle gay II.

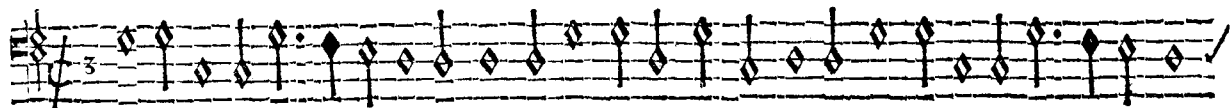
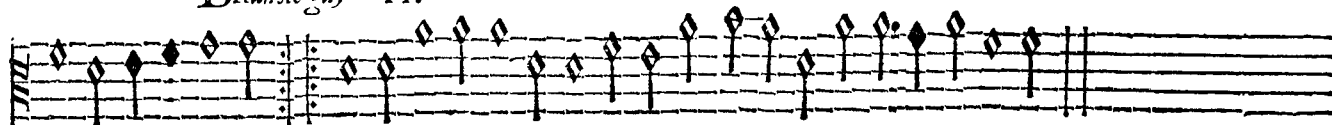


*B*Ransle gay II.

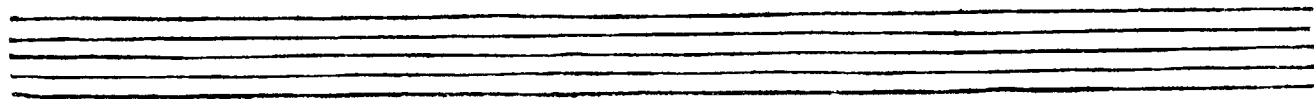
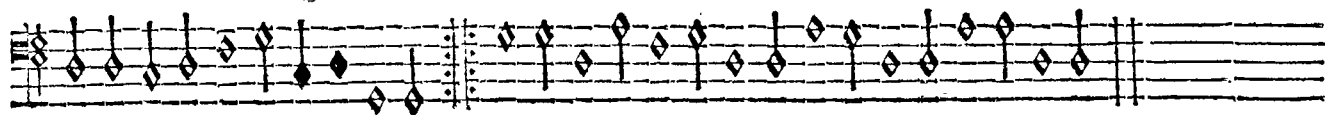




*B*Ransle gay II.



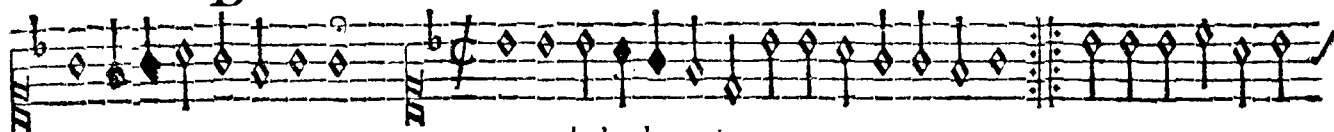
*B*Ransle gay I I.



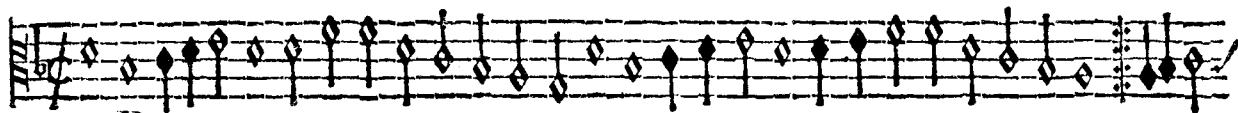
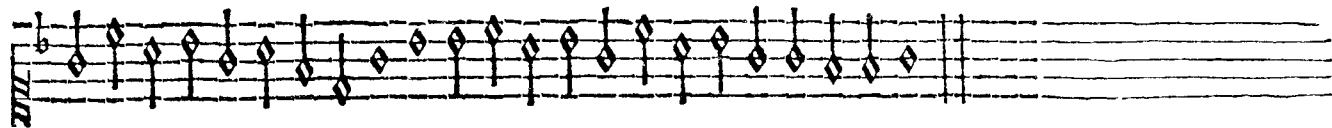
SUPERIUS ET TENOR.



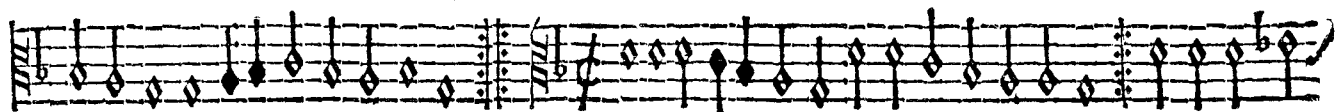
Bransle de Champagne I.



Bransle de Champagne II.



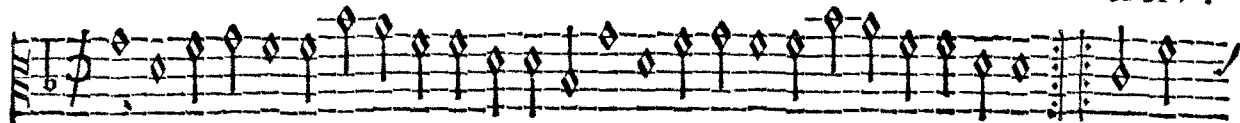
Bransle de Champagne. I.



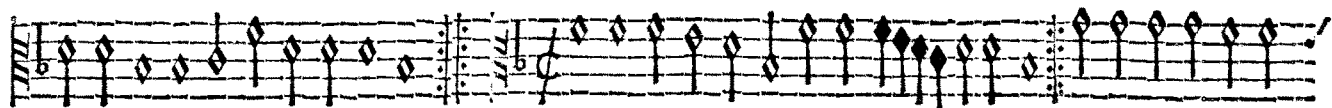
Bransle de Champagne II.



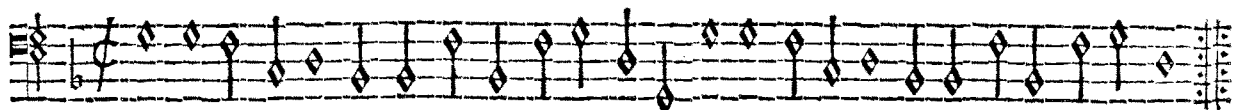
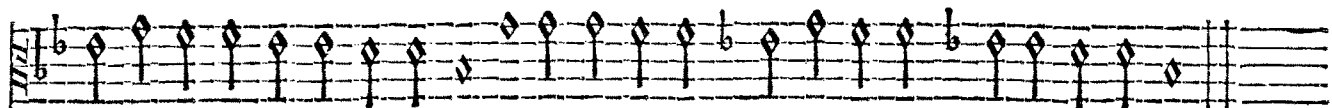




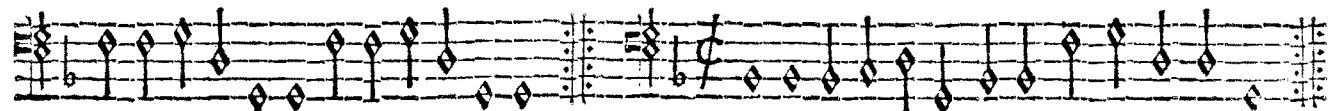
Bransle de Champagne. I.



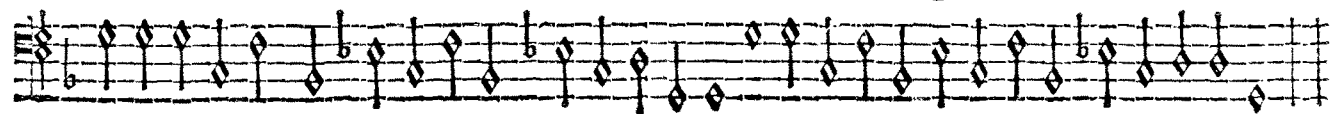
Bransle de Champagne. II.



Bransle de Champagne. I,



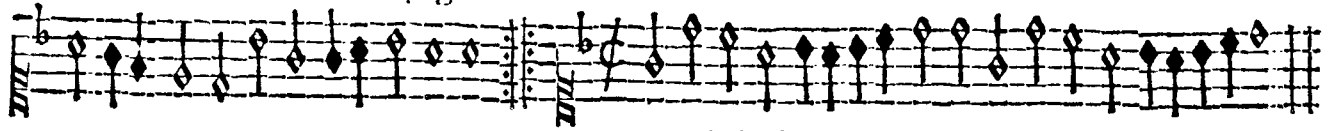
Bransle de Champagne. II,



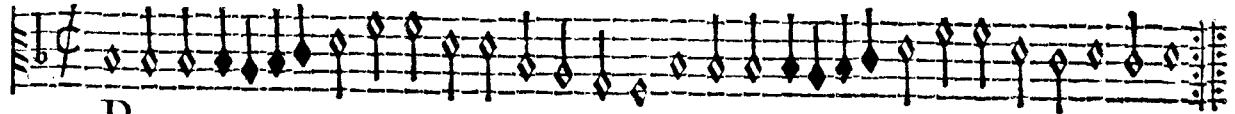
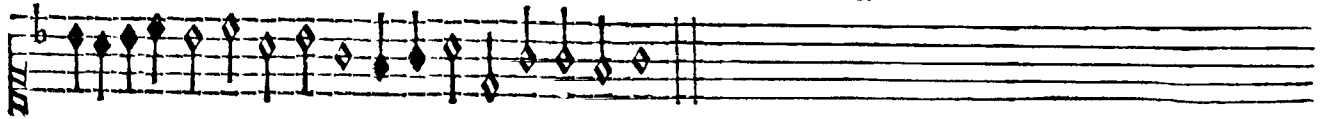
SUPERIUS ET TENOR.



Bransle de Champagne III.



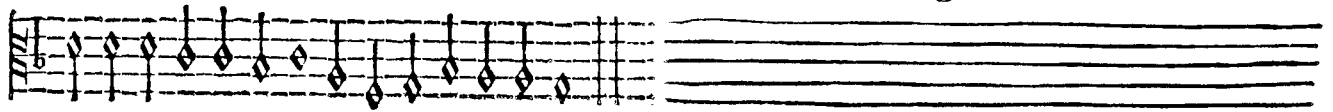
Bransle de Champagne IIII.

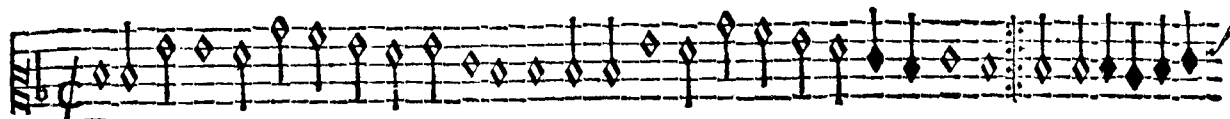


Bransle de Champagne III,



Bransle de Champagne IIII.

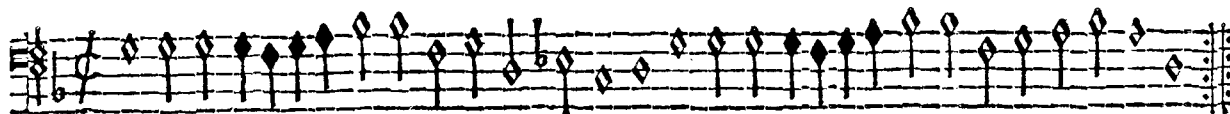
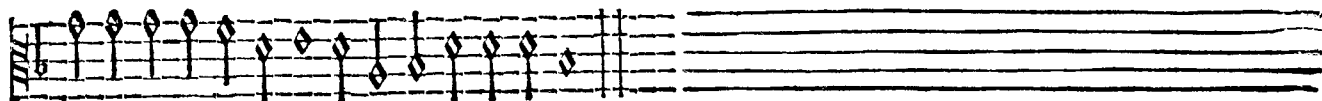




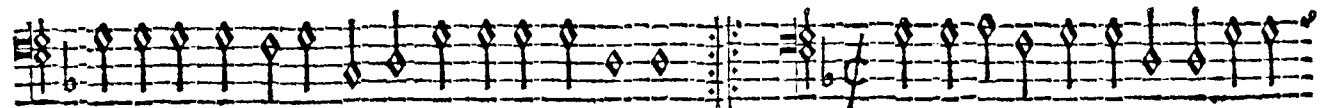
*B*ransle de Champagne, III.



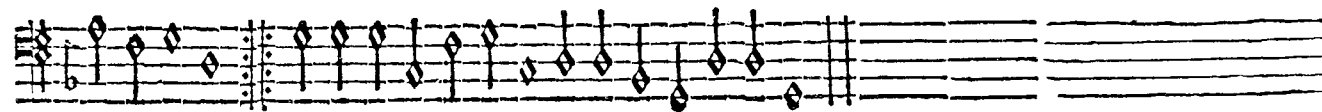
*B*ransle de Champagne IIII.



*B*ransle de Champagne III.



*B*ransle de Champagne. IIII.



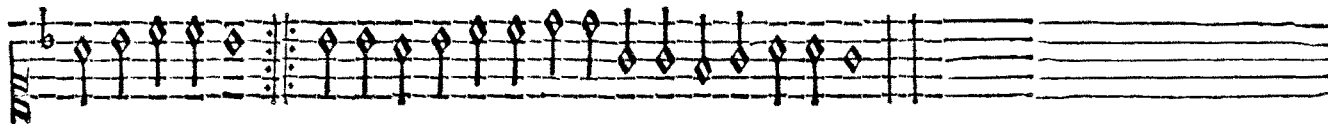
SUPERIUS. ET TENOR.



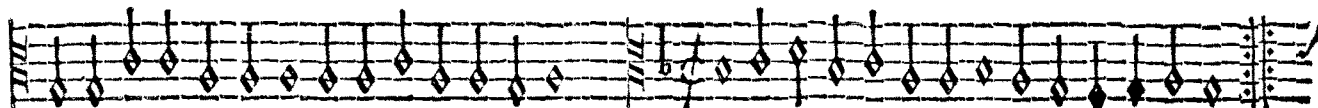
*Branle de Champagne V.*



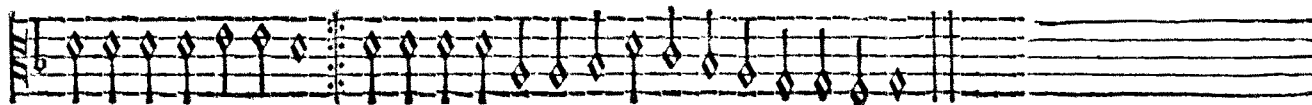
*Branle le Champagne VI.*



*Branle de Champagne V.*

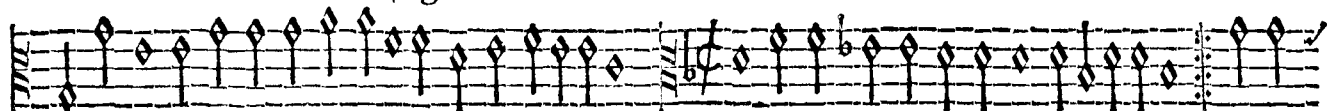


*Branle de Champagne VI.*

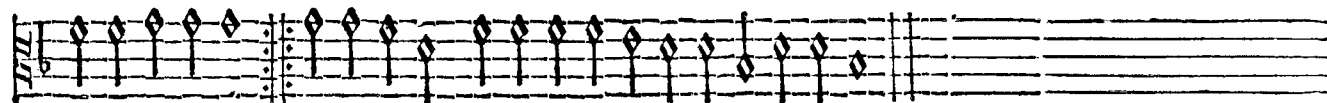




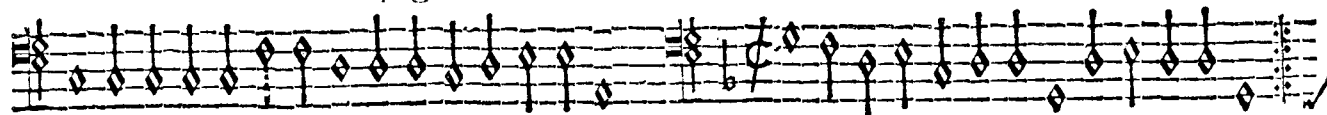
*B*ransle de Champagne V,



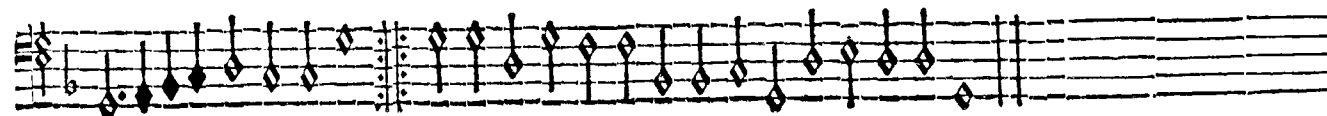
*Bransle de Champagne VI.*



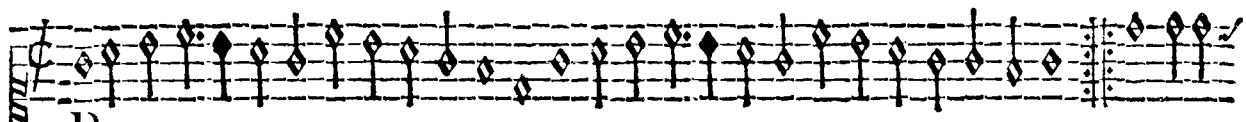
*B*ransle de Champagne V.



*Bransle de Champagne VI.*



SUPERIUS ET TENOR.



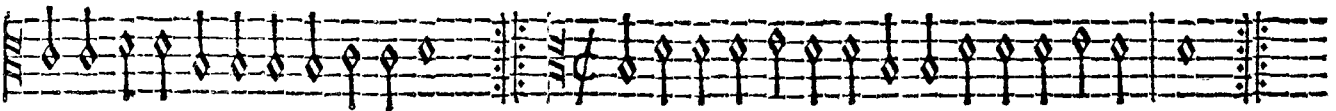
Bransle de Champagne VII.



Bransle de Champagne VIII.

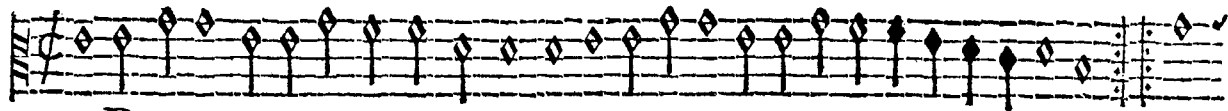


Bransle de Champagne VII.

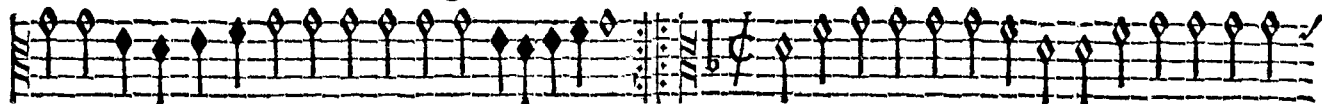


Bransle de Champagne VIII.

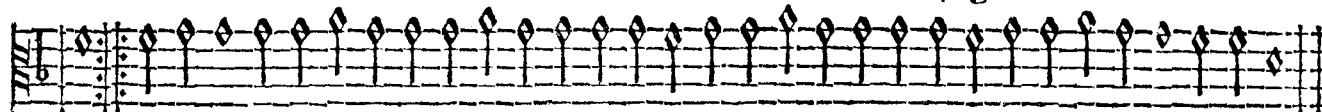




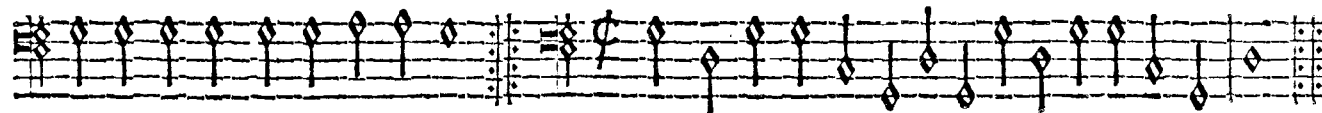
Bransle de Champagne VII.



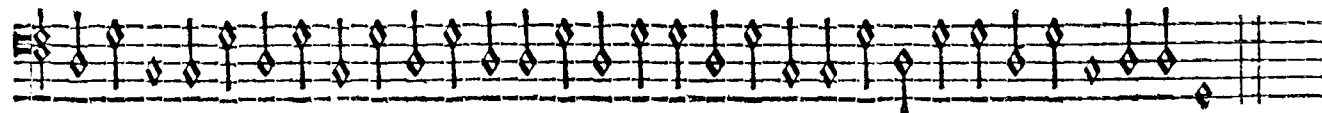
Bransle de Champagne VIII.



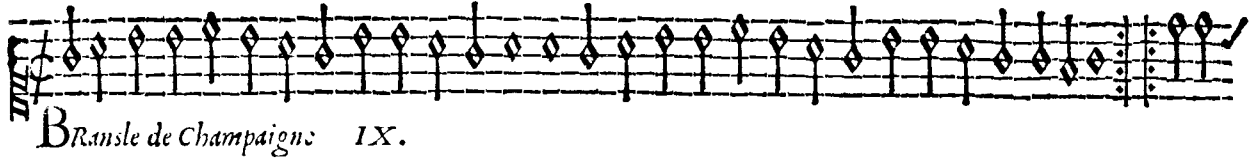
Bransle da Champagne VII.



Bransle de Champagne VIII.



SUPERIUS ET TENOR.



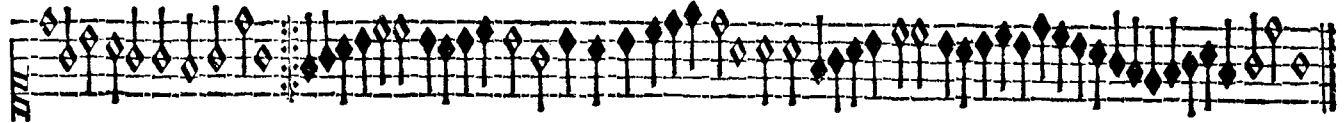
Bransle de Champagne IX.

The first musical staff features a treble clef and a key signature of one sharp (F#). The melody consists of a sequence of eighth notes, starting on G4 and moving in a generally ascending and then descending pattern. The staff concludes with a double bar line and repeat dots.



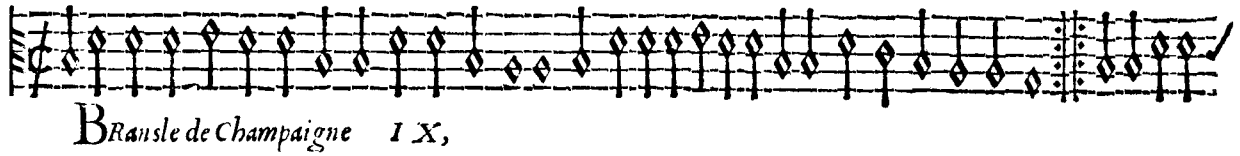
Bransle de Champagne X.

The second musical staff features a treble clef and a key signature of one sharp (F#). The melody is similar to the previous one, with eighth notes and a similar contour. It includes a repeat sign in the middle of the staff.



Bransle de Champagne IX.

The third musical staff features a treble clef and a key signature of one sharp (F#). The melody continues with eighth notes, showing a more complex rhythmic pattern with some beamed eighth notes. It includes a repeat sign.



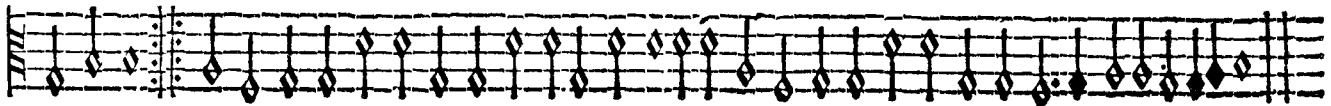
Bransle de Champagne IX.

The fourth musical staff features a treble clef and a key signature of one sharp (F#). The melody consists of eighth notes, similar to the previous examples. It concludes with a double bar line and repeat dots.



Bransle de Champagne X.

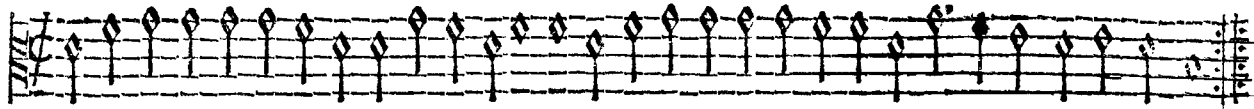
The fifth musical staff features a treble clef and a key signature of one sharp (F#). The melody consists of eighth notes, similar to the previous examples. It includes a repeat sign.



Bransle de Champagne X.

The sixth musical staff features a treble clef and a key signature of one sharp (F#). The melody consists of eighth notes, similar to the previous examples. It concludes with a double bar line and repeat dots.

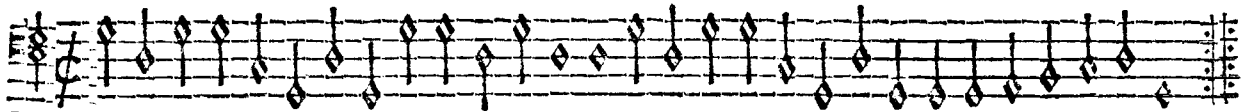
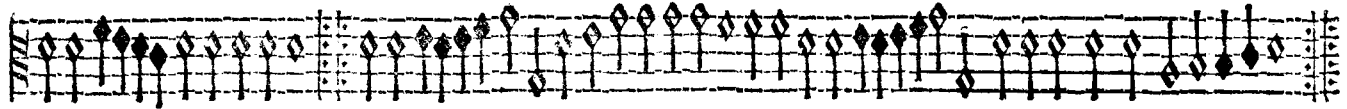




Bransle de Champagne, IX.



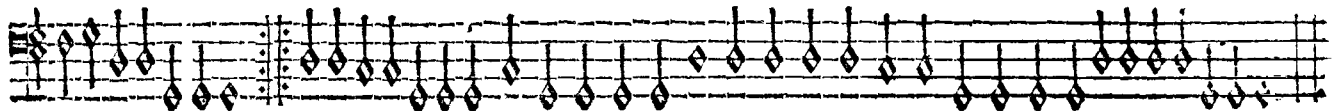
Bransle de Champagne, X.



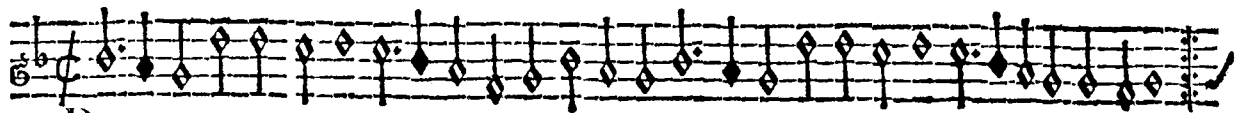
Bransle de Champagne IX.



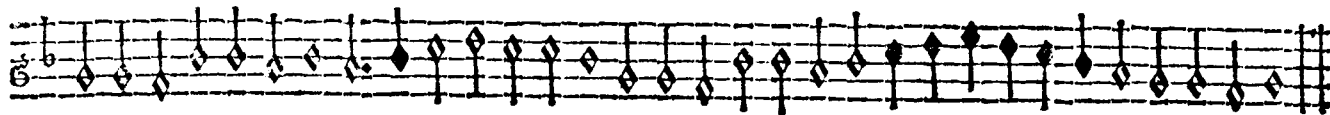
Bransle de Champagne X.



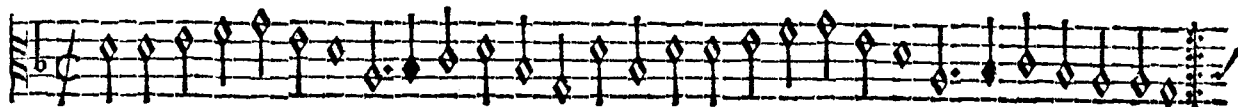
SUPERIUS ET TENOR.



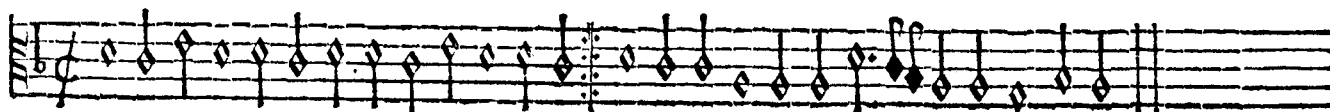
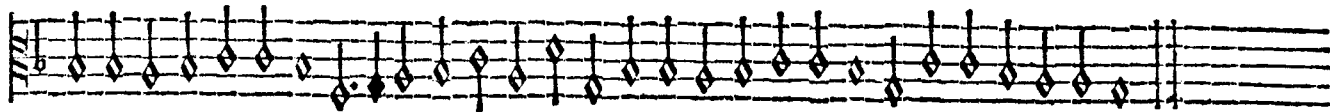
Bransle de Champagne XI.



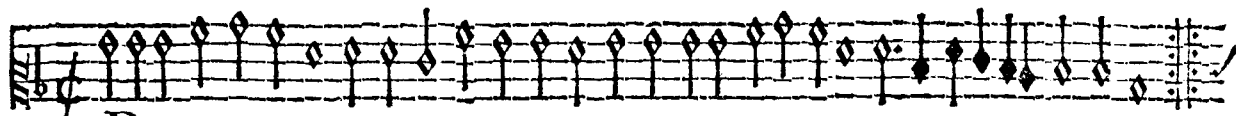
Bransle de Champagne XII.



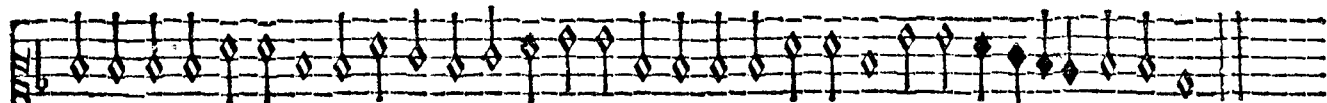
Bransle de Champagne XI.



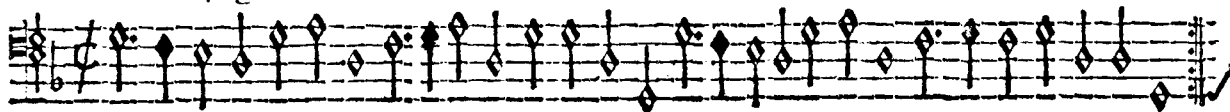
Bransle de Champagne. XII.



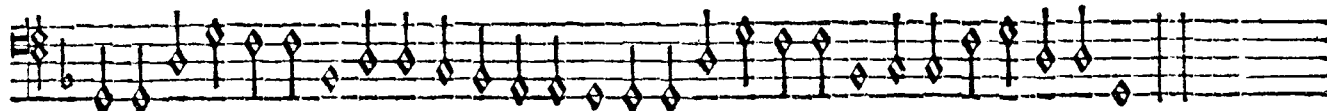
Bransle de Champagne XI.



Bransle de Champagne XII.

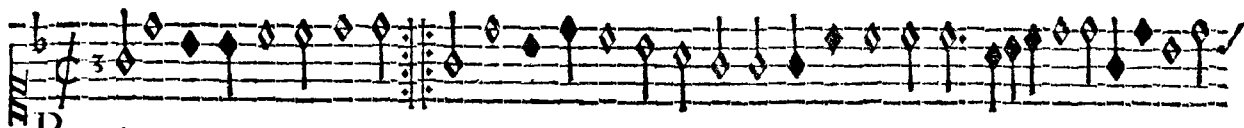


Bransle de Champagne XI.

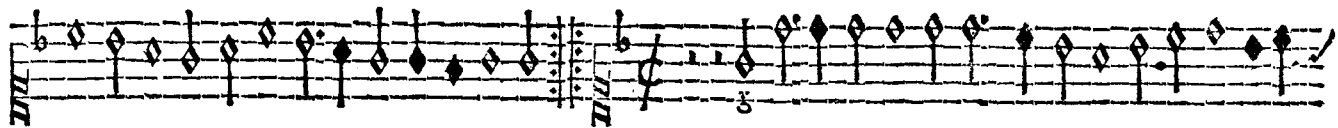


Bransle de Champagne XII.

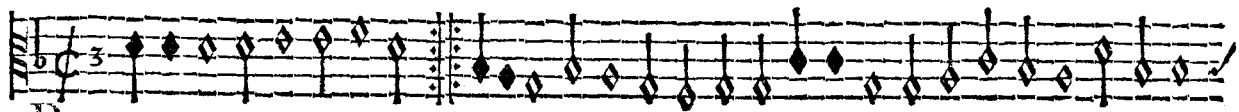
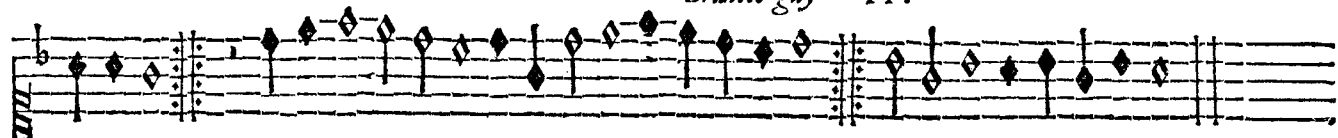
SVPERIVS. ET TENOR.



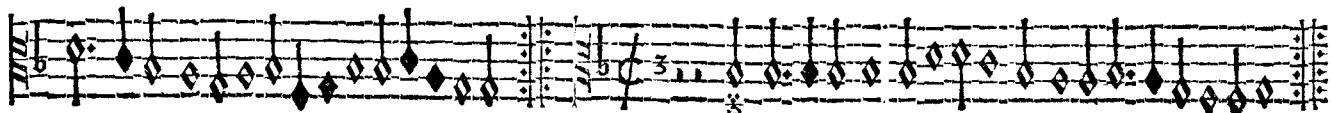
Bransle gay I.



Bransle gay II.



Bransle gay I.



Bransle gay II.

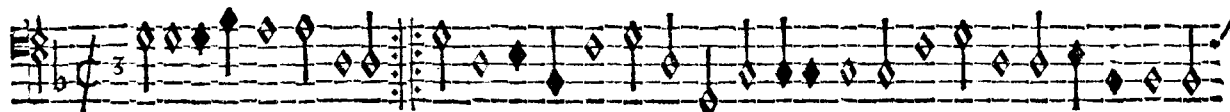




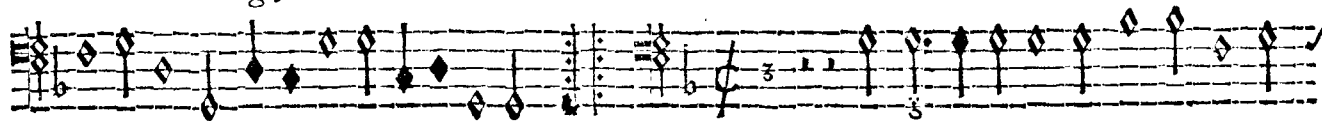
Bransle gay I.



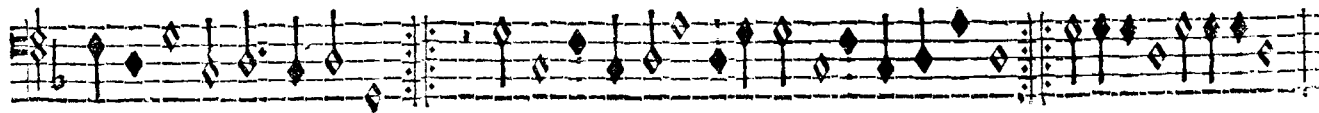
Bransle gay II.



Bransle gay I.



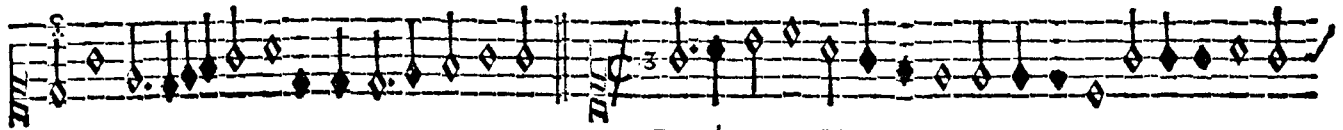
Bransle gay II.



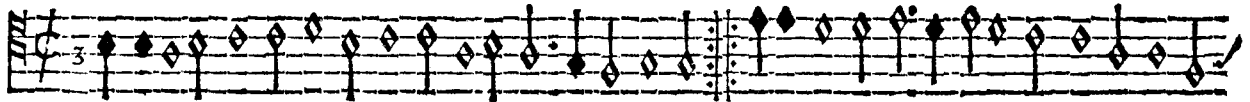
SUPERIUS ET TENOR.



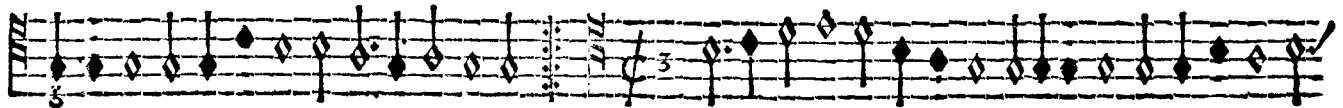
Bransle gay 111.



Bransle gay 1111.



Bransle gay 111.

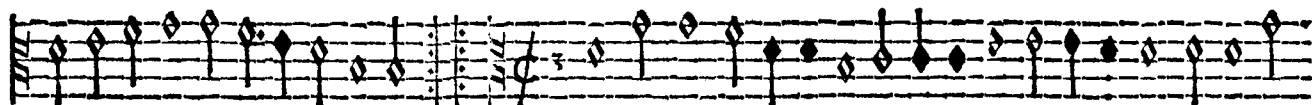


Bransle gay 1111.

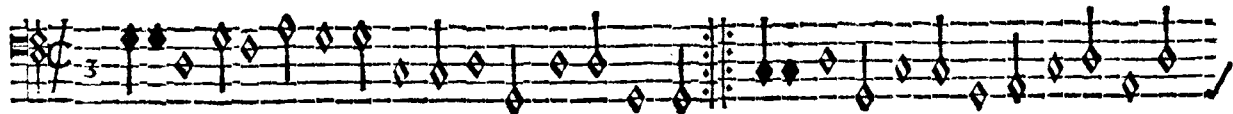
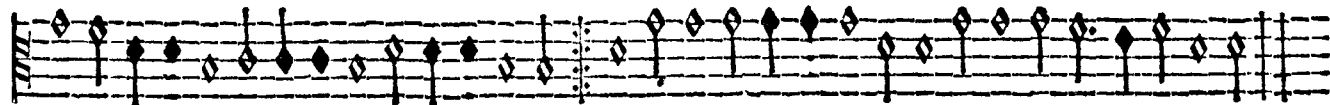




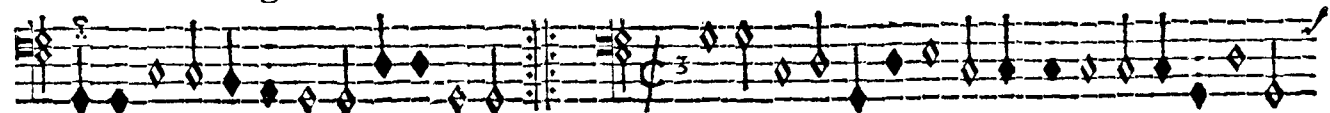
Bransle gay III.



Bransle gay IIII.



Bransle gay III.



Bransle gay IIII.



F I N D V S I X I E M E L I V R E

de dancieries, nouvellement imprimé à

Paris le ij. iour d'Octobre,

1 5 5 5 .

Avec priuilege du Roy, pour neuf ans.